



Features

Stylish projection screen with black, aluminium case.

A perfectly taut projection screen fabric is facilitated with tensioned cords on both sides and a slat bar which has been made heavier.

Supplied with extra high, black border on top to achieve ideal viewing height.

Black border increases perceived clarity of projected image.

Automatic stop for rolling and re-rolling guarantees long lifespan of projection screen fabric.

Slat bar rolls away into the case completely.

Quiet, fast motor with 5-year guarantee and CE quality mark.

With special bracket for easy mounting on wall or ceiling.

RENEWED

▲ Exclusive, electrically operated projection screen with tensioning system for a flat projection screen fabric under all circumstances.

Technical characteristics

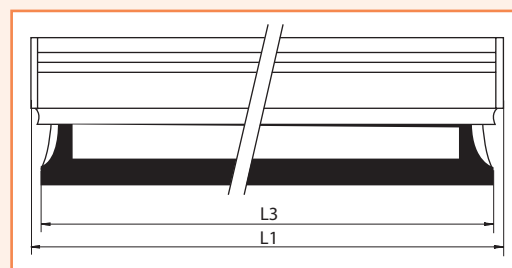
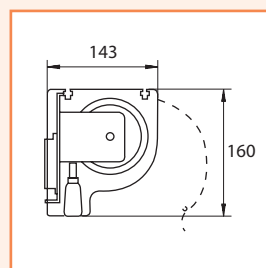
- ▶ Aluminium case with a matte black powder coating.
- ▶ Matte white D: vinyl film with black backing; reflection value 1.0, viewing angle 50° L/R, weight approx. 490 gr/m² and thickness approx. 0.26 mm.
- ▶ High Contrast D: grey vinyl film with black backing; reflection value 0.8, viewing angle 40° L/R, weight approx. 490 gr/m² and thickness approx. 0.26 mm.
- ▶ Da-Tex rear projection screen fabric: translucent, grey vinyl; reflection value 1.8, no hotspot, viewing angle 30° L/R, weight approx. 490 gr/m² and thickness approx. 0.26 mm.
- ▶ Screen fabrics satisfy the requirements for fire-resistance of construction materials and components.
- ▶ Projection screen fabric equipped with a black border all around of a minimum of 5 cm and 30 cm black border on the top.
- ▶ All of the electrical motors comply with the following international regulations: EN 60335; IEC 61000; 89/336/EWG; 89/392/EEG and supplements : 91/638/EEG and 93/44/EEG.
- ▶ Somfy motor with 32 RPM (revolutions per minute) and 120 Watts.
- ▶ Front of case folds to facilitate access to motor and projection screen fabric.
- ▶ Cords can be tensioned using adjusting screws on both sides of the slat bar.
- ▶ Supplied complete with 3-metre connection cable and separate wall switch (CE quality mark).

Options

- ▶ Screen fabrics Matte white D, High Contrast D and Da-Tex rear projection screen fabric.
- ▶ Formats standard (1:1), video (4:3) and HDTV (16:9).

Accessories

- Infrared remote control PASEL 012
- ▶ Cordless radio frequency remote control PASEL 013



Aspect ratio	Screen size min.hxw cm	Viewing size hxw cm	Nominal diagonal		Case		Net weight in kg	Up/down in sec.	Screen fabrics			Max. screen fabric length in cm	Extra border in cm
			cm	inches	L1 mm	L3 mm			Matte white prod.code	DHigh Contrast prod. code	DDa-Tex prod. code		
1:1	183x183	178x178			2380	2100	30	20	PBSTC 024		PBSTC 041	217	30
	218x218	213x213			2670	2390	35	23	PBSTC 025		PBSTC 042	252	30
	249x249	244x244			3000	2720	39	25	PBSTC 026		PBSTC 043	283	30
4:3	132x175	127x170	213	84	2230	1940	28	15	PBSTC 027	PBSTC 034	PBSTC 044	166	30
	157x208	152x203	254	100	2600	2310	33	17	PBSTC 028	PBSTC 035	PBSTC 045	191	30
	180x239	175x234	305	120	2840	2550	36	19	PBSTC 029	PBSTC 036	PBSTC 046	214	30
16:9	119x208	114x203	234	92	2550	2260	30	14	PBSTC 030	PBSTC 037	PBSTC 047	153	30
	137x239	132x234	269	106	2880	2590	31	16	PBSTC 031	PBSTC 038	PBSTC 048	171	30
	152x269	147x264	302	119	3190	2910	37	17	PBSTC 032	PBSTC 039	PBSTC 049	186	30
	170x300	165x295	338	133	3520	3240	44	19	PBSTC 033	PBSTC 040	PBSTC 050	204	30

For recommendations on the right screen fabric and size, see pages 4-7 or consult the interactive screen selector at www.projecta.nl ▲ incl. 4-cm. slat bar