

TENSIONED DESCENDER (RF) ELECTROL

**TENSIONED DESCENDER ELECTROL**

- Attractive and durable built-in solution with tab-tensioned system for flat projection screen surface at all times. Building in a projection screen efficiently was never so easy.
- Easy Serviceability System: once installed, the motor and screen surface remain accessible making adjustments and carrying out maintenance possible. The bottom panel and case remain connected to each other.
- Easy to build into existing non-modular ceilings.
- The case and the projection screen surface can be made to exactly the right size and the case is available in any colour for optimal integration into any interior.
- The projection surface is extremely flat, making it suitable for all types of data and video projection.

TENSIONED DESCENDER RF ELECTROL

- Includes built-in radio frequency receiver, making it possible to operate the screen using the remote control supplied.

TENSIONED DESCENDER RF ELECTROL

Aspect Ratio	Overall	Viewing	Nominal		Black	Overall Case	Screen Surfaces		
	Dimensions	Area	Diagonal		Drop	Length (RAL 9016)	Matte White	High Contrast Cinema Vision	HCCV Sound
	H x W cm	H x W cm	cm	inches	cm	mm	Product Code	Product Code	Product Code
4:3	138 x 180	126 x 168	210	83"	30	2212	10100901	10100918	10100930
	153 x 200	143 x 190	238	94"	30	2431	10100902	10100919	10100931
	168 x 220	158 x 210	263	103"	30	2651	10100903	10100920	10100932
	183 x 240	173 x 230	288	113"	30	2819	10100904	10100921	10100933
	213 x 280	203 x 270	338	133"	30	3253	10100905	10100922	10100934
	228 x 300	218 x 290	363	143"	30	3471	10100906	10100923	10100935
16:9	102 x 180	95 x 168	193	76"	30	2212	10100907	10100924	10100936
	117 x 200	107 x 190	218	86"	30	2431	10100908	10100925	10100937
	128 x 220	118 x 210	241	95"	30	2651	10100909	10100926	10100938
	139 x 240	129 x 230	264	104"	30	2819	10100910	10100927	10100939
	162 x 280	152 x 270	310	122"	30	3253	10100911	10100928	10100940
	173 x 300	163 x 290	333	131"	30	3471	10100912	10100929	10100941
16:10	129 x 200	119 x 190	224	88"	30	2431	10100913		
	141 x 220	131 x 210	248	97"	30	2651	10100914		
	154 x 240	144 x 230	271	107"	30	2819	10100915		
	179 x 280	169 x 270	318	125"	30	3253	10100916		
	191 x 300	181 x 290	342	135"	30	3471	10100917		

TENSIONED DESCENDER (RF) ELECTROL



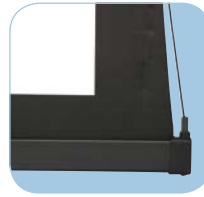
Perfect integration into the ceiling



Easy Serviceability



In the case mounting possibility



Slat bar retracts into the case



TENSIONED DESCENDER ELECTROL

Aspect Ratio	Overall	Viewing	Nominal		Black	Overall Case	Screen Surfaces		
	Dimensions	Area	Diagonal		Drop	Length (RAL 9016)	Matte White	High Contrast Cinema Vision	HCCV Sound
	H x W cm	H x W cm	cm	inches	cm	mm	Product Code	Product Code	Product Code
4:3	138 x 180	126 x 168	210	83"	30	2212	10100942	10100959	10100971
	153 x 200	143 x 190	238	94"	30	2431	10100943	10100960	10100972
	168 x 220	158 x 210	263	103"	30	2651	10100944	10100961	10100973
	183 x 240	173 x 230	288	113"	30	2819	10100945	10100962	10100974
	213 x 280	203 x 270	338	133"	30	3253	10100946	10100963	10100975
	228 x 300	218 x 290	363	143"	30	3471	10100947	10100964	10100976
16:9	102 x 180	95 x 168	193	76"	30	2212	10100948	10100965	10100977
	117 x 200	107 x 190	218	86"	30	2431	10100949	10100966	10100978
	128 x 220	118 x 210	241	95"	30	2651	10100950	10100967	10100979
	139 x 240	129 x 230	264	104"	30	2819	10100951	10100968	10100980
	162 x 280	152 x 270	310	122"	30	3253	10100952	10100969	10100981
	173 x 300	163 x 290	333	131"	30	3471	10100953	10100970	10100982
16:10	129 x 200	119 x 190	224	88"	30	2431	10100954		
	141 x 220	131 x 210	248	97"	30	2651	10100955		
	154 x 240	144 x 230	271	107"	30	2819	10100956		
	179 x 280	169 x 270	318	125"	30	3253	10100957		
	191 x 300	181 x 290	342	135"	30	3471	10100958		