



Features

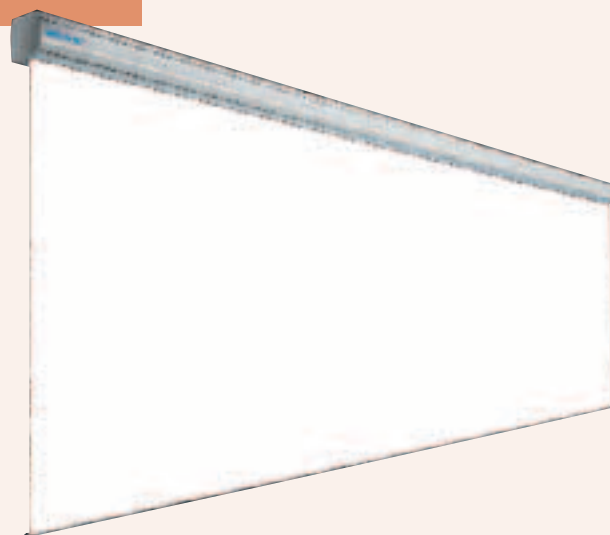
Robust case with strong motor.

Projection screen fabric complies with the highest standard for fire safety (M1).

Pre-programmed mechanical fine-tuning of the roll/re-roll of the projection screen fabric facilitates rapid installation.

Strong motor with 5-year guarantee and CE quality mark.

Choice of mounting on wall and/or ceiling via flexibly placed brackets.



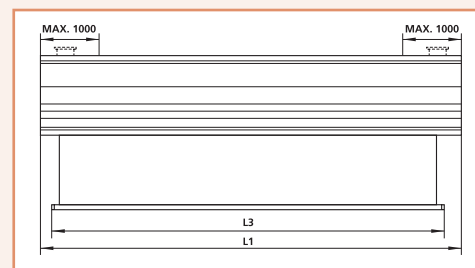
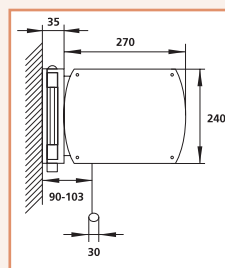
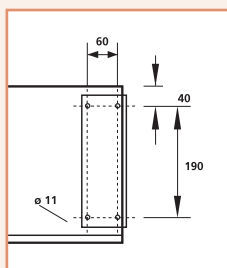
▲ **Large screen projection screens available in widths from 4.5 to 7 metres.**

Technical characteristics (see also page 8).

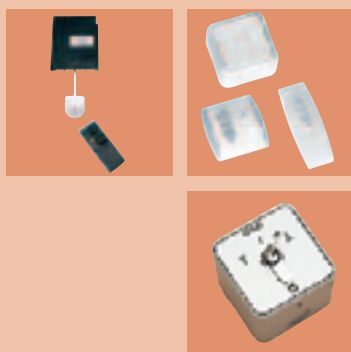
- ▶ All projection screens are designed and manufactured according to DIN 19045 parts 1-5.
- ▶ Sturdy case. Equipped with anodised aluminium at the front and back and steel at the top, lacquered in grey (RAL 7035).
- ▶ Matte white P: vinyl foil; reflection value 1.0, viewing angle 50° L/R, weight approx. 480 gr/m² and thickness approx. 0.45 mm.
- ▶ The projection screen fabric has a horizontal weld every 1.9 metres which is invisible during projection. Projection screen fabrics satisfy the requirements for fire-resistance of construction materials and components.
- ▶ All of the electrical motors comply with the following international regulations concerning product safety, electrical safety and electro-magnetic compatibility: EN 60335; IEC 61000; 89/336/EWG; 89/392/EEG and supplements : 91/638/EEG and 93/44/EEG.
- ▶ Somfy motor with 17 RPM (revolutions per minute) and 240 Watts. Motor is mounted on the right.
- ▶ Motor equipped with electric brake to prevent unwanted roll out and thermal overload cut-out.
- ▶ Mounting brackets should be mounted within a maximum of 1 metre of the side of the case.
- ▶ Available with a 10-metre connection cable and separate switch.
- ▶ Projection screen is supplied in sturdy, wooden transport case.

Accessories

- ▶ Infrared remote control has a range of 7 metres and comprises a wall box with infrared receiver and transmitter. PASEL 012
- ▶ Cordless radio frequency remote control for distances up to 30 metres. Three-part set comprising a control module, cordless switch and a transmitter. PASEL 013
- ▶ Key-switch to prevent undesired use. PASEL 009



| Screen size h x w cm | Case L1 mm | L3 mm | Net weight in kg | Up/down in sec. | Screen fabric Matte white P prod. code |
|-------------------------|---------------|-------|---------------------|--------------------|--|
| 400x450 | 4700 | 4580 | 112 | 32 | PBSGS 015 |
| 450x450 | 4700 | 4580 | 115 | 36 | PBSGS 016 |
| 400x500 | 5200 | 5080 | 120 | 32 | PBSGS 001 |
| 450x500 | 5200 | 5080 | 122 | 36 | PBSGS 017 |
| 500x500 | 5200 | 5080 | 124 | 40 | PBSGS 002 |
| 400x600 | 6200 | 6080 | 142 | 32 | PBSGS 004 |
| 450x600 | 6200 | 6080 | 144 | 36 | PBSGS 005 |
| 500x600 | 6200 | 6080 | 147 | 40 | PBSGS 018 |
| 400x700 | 7200 | 7080 | 163 | 32 | PBSGS 006 |
| 450x700 | 7200 | 7080 | 166 | 36 | PBSGS 019 |
| 500x700 | 7200 | 7080 | 168 | 40 | PBSGS 007 |



For recommendations on the right screen fabric and size, see pages 4-7 or consult the interactive screen selector at www.projecta.nl.