

HEAVY DUTY FAST-FOLD® DELUXE



- Portable and very sturdy, foldable screen for large scale applications. Ideal for events.
- The Heavy Duty Fast-Fold® Deluxe consists of a sturdy, folding aluminium frame (89 x 32 mm), two detachable legs and a detachable projection screen surface which is attached to the frame by snaps.
- The frame is easy to set up without the use of tools.
- Sturdy legs with side supports for extra stability.
- The frame height is adjustable to any required viewing height by increments of 15 cm.
- Projection screen fabrics are seamless up to heights of 4.8 metres.
- The Matte White projection screen surface includes black backing as standard.
- Extra-wide black border (15 cm) on projection screen fabric.
- The Heavy Duty Fast-Fold® Deluxe is supplied with two or three robust plastic travel cases on wheels.
- Drapery Presentation Kit, which is easy to attach to the frame, is available separately.
- The frame and screen surface can be custom made to exactly the right size.

HEAVY DUTY FAST-FOLD® DELUXE

Aspect Ratio	Overall Dimensions H x W cm	Viewing Area H x W cm	Nominal Diagonal		Min. Height cm	Max. Height cm	Number of Cases	Screen Surfaces			
			cm	feet				Matte White	Da-Tex®	Dual Vision	Ultra Wide Angle
			Product Code	Product Code				Product Code	Product Code		
4:3	305 x 396	274 x 366	457	15'	310	523	2	10530465	10530470	10530484	10530485
	351 x 457	320 x 427	533	17'	355	595	2	10530466	10530471	10530486	10530487
	396 x 518	366 x 488	610	20'	401	678	2	10530467	10530472	10530488	10530489
	488 x 640	457 x 610	762	25'	493	784	2	10530468	10530473	10530490	10530491
	579 x 762	549 x 732	915	30'	584	950	3	10530469	10530474	10530492	10530493
16:9	259 x 437	229 x 406	467	15'	294	492	2	10530494	10530495	10530496	10530497
	305 x 518	274 x 488	559	18'	340	507	2	10530498	10530499	10530500	10530501
	335 x 579	305 x 549	622	20'	370	583	2	10530502	10530503	10530504	10530505
	373 x 640	343 x 610	700	23'	408	667	2	10530506	10530507	10530508	10530509
	396 x 681	366 x 650	747	25'	411	685	2	10530510	10530511	10530512	10530513
	442 x 762	411 x 732	838	28'	477	705	3	10530514	10530515	10530516	10530517
	488 x 838	458 x 808	934	31'	523	782	3	10530518	10530519	10530520	10530521
16:10	285 x 437	255 x 407	481	16'	320	502	2	10530522	10530523	10530524	10530525
	335 x 518	305 x 488	576	19'	370	522	2	10530526	10530527	10530528	10530529
	374 x 579	344 x 549	649	21'	409	607	2	10530530	10530531	10530532	10530533
	412 x 640	382 x 611	721	24'	447	690	2	10530534	10530535	10530536	10530537
	437 x 681	407 x 651	768	25'	472	700	2	10530538	10530540	10530541	10530542
	488 x 762	458 x 732	864	28'	523	721	3	10530543	10530544	10530545	10530546
535 x 838	505 x 808	953	31'	570	813	3	10530547	10530548	10530549	10530550	

HEAVY DUTY FAST-FOLD® DELUXE



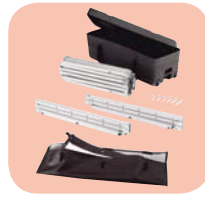
Speedy Cranks



Snap Latch hinge design



Simple, quick set up and portability



Folding frame, two HD legs, projection surface, speedy cranks and two or three travel cases.



Black frame optional



HEAVY DUTY FAST-FOLD® DELUXE SEPARATE SCREEN SURFACES

Aspect Ratio	Overall Dimensions H x W cm	Viewing Area H x W cm	Nominal Diagonal		Separate Screen Surfaces			
					Matte White	Da-Tex®	Dual Vision	Ultra Wide Angle
					Product Code	Product Code	Product Code	Product Code
4:3	305 x 396	274 x 366	457	15'	10530475	10530476	10530551	10530552
	351 x 457	320 x 427	533	17'	10530041	10530033	10530553	10530554
	396 x 518	366 x 488	610	20'	10530038	10530034	10530555	10530556
	488 x 640	457 x 610	762	25'	10530031	10530035	10530557	10530558
	579 x 762	549 x 732	915	30'	10530039	10530036	10530559	10530560
16:9	259 x 437	229 x 406	467	15'	10530561	10530562	10530563	10530564
	305 x 518	274 x 488	559	18'	10530565	10530566	10530567	10530568
	335 x 579	305 x 549	622	20'	10530569	10530570	10530571	10530572
	373 x 640	343 x 610	700	23'	10530573	10530574	10530575	10530576
	396 x 681	366 x 650	747	25'	10530577	10530578	10530579	10530580
	442 x 762	411 x 732	838	28'	10530581	10530582	10530583	10530584
	488 x 838	458 x 808	934	31'	10530585	10530586	10530587	10530588
16:10	285 x 437	255 x 407	481	16'	10530589	10530590	10530591	10530592
	335 x 518	305 x 488	576	19'	10530593	10530594	10530595	10530596
	374 x 579	344 x 549	649	21'	10530597	10530598	10530599	10530600
	412 x 640	382 x 611	721	24'	10530601	10530602	10530603	10530604
	437 x 681	407 x 651	768	25'	10530605	10530606	10530607	10530608
	488 x 762	458 x 732	864	28'	10530609	10530610	10530611	10530612
	535 x 838	505 x 808	953	31'	10530613	10530614	10530615	10530616