

CINEMALITE DELUXE



- Ultra-lightweight portable projection screen in wide screen format.
- The viewing height can be infinitely adjusted with ease using the telescopic rod to the rear of the screen.
- Supplied with an extra black lower border as standard for adjusting to the ideal viewing height.
- The CinemaLite has two feet which are folded out when setting up to give it stability.
- The case is made of aluminium with a subtle titanium-coloured finish.

PORTALITE



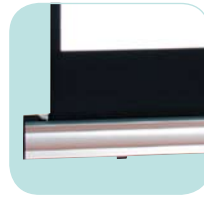
- Portable projection screen, unique in design, in a lightweight aluminium case.
- The four legs, which are integrated into the case, are easily folded in and out. Set it up, pull it out and the screen is ready for use.
- The smallest model (94 x 107 cm, 50" diagonal) does not have legs and is used for table-top projection.
- Height adjustment of the projection screen surface is flexible due to the patented tensioning arm with gas springs (registration 1015567).
- Supplied with an extra black lower border as standard for adjusting to the ideal viewing height.
- The case (85 x 105 mm) is made of anodised aluminium.



Telescopic rod



Arm is protected during transport



Lightweight aluminium case



50" table model



Tensioning Arm



CINEMALITE DELUXE

Aspect Ratio	Overall Dimensions H x W cm	Viewing Area H x W cm	Nominal Diagonal		Transport Length cm	Screen Surfaces
			cm	inches		Matte White High Gain Product Code
16:9	109 x 184	97 x 172	198	78"	193	10530461

PORTALITE

Aspect Ratio	Overall Dimensions H x W cm	Viewing Area H x W cm	Nominal Diagonal		Transport Length cm	Screen Surfaces	
			cm	inches		Matte White Product Code	Datalux Product Code
4:3	91 x 107	76 x 102	127	50"	118	10400010	10400011
	99 x 131	94 x 126	152	60"	143	10400012	10400013
	115 x 151	110 x 146	183	72"	163	10400014	10400015
16:9	91 x 151	86 x 146	183	72"	163	10400020	
16:10	96 x 151	91 x 146	183	72"	163	10400339	