

## New Product Summary

Launch Date – 2nd July 2007  
Under NDA Until – 1st June 2007

**Epson**  
**EMP S52**

### The multimedia partner that brings the big screen to work and home

The versatile Epson EMP-S52 multimedia projector gives a professional performance at work and at home. Outstanding for business or education presentations, but just as happy bringing big screen entertainment to your living room.

#### You choose – it's always ready to go

With one of the quickest start-up times on the market, this projector will turn on in just 5 seconds. Afterwards you can turn off, disconnect the power cable and be ready to move straight away.

#### You choose – it's so adaptable

After a quick, simple set up, you can rely on a perfect, uniform image from a wide range of positions, thanks to a large 30° vertical keystone correction angle. And it's great in smaller rooms too - a 60" image can be created just 1.8m from the screen.

#### You choose – it's so easy

This projector is designed for simple operation. The convenient, intuitive control panel gives you quick access to a range of information in key areas including power, status, adjustments, controls and a comprehensive help function.

#### You choose – it's brighter and better

Epson's long life, low wattage 'E-TORL' lamp is smaller and more efficient without compromising brightness and lasts for up to 4000 hours. This projector is quiet too - at just 28dB sound level, your audience will always be concentrating on your presentation.

#### You choose – it's up to you

With the Epson projectors, you're always in control. Password protection offers security, and a lockable control panel means if you have the remote, you have complete control.

#### Big screen home entertainment

##### You choose – it's your lifestyle

Whatever you choose to give the big screen treatment, from photos and movies to sports and video games, the 7 preset colour modes ensure excellent colour every time. And with the black and white enhancer, you'll see every detail even on dark or bright images.

##### You choose – it's the big screen solution

You can even create a genuine movie experience. Simply change the aspect of the screen from 4:3 format to 16:9 – just like a real cinema!

#### Entry level value, top level features.

#### For business presentations

- Compact and light, simple to set up and operate
- Enjoy unbeatable quality with Epson 3LCD technology
- Keep on the move with Quick Start, Instant Off
- AV mute slide for more effective presentations

#### For home entertainment

- Choose from 7 colour modes to optimise quality
- Add the cinema experience to your home with the 16:9 viewing format
- A true multimedia partner – from computers to gaming and DVD player to digital cameras
- Place the projector off centre with no distortion



**3LCD**  
**E-TORL**

Remote control

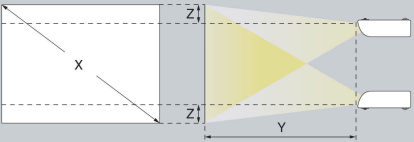


### Ordering information

<b>Description</b>	EMP- S52 LCD Projector
<b>Part Number</b>	V11H252140DA
<b>Barcode</b>	8715946390321
<b>Carton Dimensions</b>	427x379x182mm
<b>Carton Weight</b>	net= 2.7kg; gross=5.3kg

## Screen size and projection distance

Use the Epson Projection Distance Calculator software available from [www.epson.co.uk](http://www.epson.co.uk) for distances and screen sizes not shown below.



4:3 Screen size	Shortest (Wide)	Longest (Tele)	Vertical distance from center of lens to bottom edge of screen
X (screen size / dimension)	Y (cm / inch)		Z (cm / inch)
30" / 61 cm x 46 cm 24.0" x 18.1"	87 / 34	119 / 47	4 / 1.7
40" / 81 cm x 61 cm 31.9" x 24.0"	117 / 46	159 / 63	6 / 2.3
60" / 120 cm x 90 cm 47.2" x 35.4"	177 / 70	240 / 95	9 / 3.4
80" / 160 cm x 120 cm 63.0" x 47.2"	237 / 93	321 / 126	12 / 4.5
100" / 200 cm x 150 cm 78.7" x 59.1"	297 / 117	402 / 158	14 / 5.7
200" / 410 cm x 300 cm 161.4" x 118.1"	597 / 235	807 / 318	29 / 11.3
300" / 610 cm x 460 cm 240.2" x 181.1"	897 / 353	1212 / 477	43 / 17.0

## Accessories

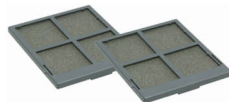
(Model code) **order code**

### Consumables

Spare Lamp (ELPLP41)  
**V13H010L41**



Air Filter Set (ELPAF13)  
**V13H134A13**



### Screens

50" Portable Screen (ELPSC06)  
**V12H002S06**



60" Portable Screen (ELPSC07)  
**V12H002S07**



80" Portable Screen (ELPSC08)  
**V12H002S08**

### Mountings

Ceiling Plate (ELPFC03)  
Required if using a ceiling pipe.  
**V12H003C03**



Ceiling Pipe (silver) 370mm  
(ELPFP04)  
**V12H003P04**



Ceiling Pipe (silver) 570mm  
(ELPFP05)  
**V12H003P05**

Ceiling Pipe (silver) 770mm  
(ELPFP06)  
**V12H003P06**

Ceiling Mount (ELPMB18)  
Connects to the projector and either directly to the ceiling, or to a ceiling pipe.  
**V12H003B18**



### Cables

VGA Computer Cable HD-15 to HD-15 1.8m (ELPKC02)  
**V12H005C02**



VGA Computer Cable HD-15 to HD-15 3.0m (ELPKC09)  
**V12H005C09**

VGA Computer Cable HD-15 to HD-15 20m (ELPKC10)  
**V12H005C10**

Component Video Cable (ELPKC19)  
**V12H005C19**



HD-TV Cable (ELPKC22)  
**V12H005C22**



## What's in the Box?

**Projector**  
with Slide Lens Shutter



**Remote Control**



**2 x AAA alkali batteries**  
for the remote control



**Power Cable**  
1.8m cable



**Computer Cable**  
Mini D-Sub 15-pin/mini D-Sub 15-pin, 1.8 m (6 ft.)  
Use when projecting images from a computer



**Read This First Booklet**  
Explains the contents of the box and which manuals the user should refer to.

Image TBC

**Setup Guide**  
Contains information on basic operations for preparing the projector before use (setup and connecting video equipment or a computer) and for starting projection.

Image TBC

**Document CD-ROM**  
Contains information on common and useful functions, configuration, troubleshooting, and maintenance.

Image TBC

**Safety Instructions**  
/ World Wide Warranty Terms

image TBC

# Specifications

<b>MODEL</b>	<b>EMP-S52</b>	
<b>Projection System</b>	RGB liquid crystal shutter projection system	
<b>Projection Method</b>	Front / Rear / Ceiling mount	
<b>Specifications of Main Parts</b>		
<b>LCD</b>	<b>Size</b>	0.55-inch without MLA
	<b>Driving Method</b>	Poly-silicon TFT active matrix
	<b>Pixel Number</b>	480,000 dots (800 x 600) x 3
	<b>Native Resolution</b>	SVGA
	<b>Aspect Ratio</b>	4:3
	<b>Pixel Arrangement</b>	Cross stripe
	<b>Refresh Rate</b>	50 Hz - 60 Hz
<b>Projection Lens</b>	<b>Type</b>	Digital zoom / Manual focus
	<b>F-Number</b>	1.44
	<b>Focal Length</b>	16.6 mm
	<b>Zoom Ratio</b>	Digital Zoom 1 – 1.35
	<b>Lens Cover</b>	Slide lens shutter
<b>Lamp</b>	<b>Type</b>	170 W UHE
	<b>Life</b>	3000 hours (High bright) / 4000 hours (Low bright)
<b>Screen Size (Projected Distance)</b>	30" to 300" [1.19 to 12.12 m] (Zoom:Tele) 30" to 300" [0.87 to 8.97 m] (Zoom:Wide) 60" screen 1.8 - 2.4 m	
<b>Brightness</b>	1800 ANSI lumens (Colour mode: Game, Zoom: Wide)	
<b>High Brightness Mode</b>	1440 ANSI lumens (Colour mode: Game, Zoom: Wide)	
<b>Low Brightness Mode</b>		
<b>Contrast</b>	400:1 (Colour mode : Game, High brightness mode)	
<b>Brightness Uniformity</b>	90%	
<b>Colour Reproduction</b>	Full-colour (16.77 million colours)	
<b>Video Quality</b>	Simple Interface-Progressive conversion	
<b>Sound Output</b>	1 W Monaural	
<b>Speaker</b>	35 • • x20 • • x 1	
<b>Function</b>	User logo, A/V mute, Freeze, E-Zoom, Help	
<b>Colour Mode</b>	PC: Photo, Presentation, Theatre, Game, sRGB, Blackboard, Text Video: Sports, Presentation, Theatre, Game, sRGB, Blackboard, Text	
<b>Remote Control Infrared Receiver Position / Distance / Directivity</b>	Front & rear , 6 m Right / Left : -30 to +30 degrees Upper / Lower : -15 to +15 degrees	
<b>Effective Scanning Frequency Range (Analogue)</b>	13.5 MHz to 162 MHz up to UXGA 60 Hz 15 kHz to 92 kHz	
<b>Pixel Clock</b>	Horizontal Vertical 50 Hz to 85 Hz	
<b>Adjustment Function Projector / Remote Control</b>	Brightness / Contrast / Tint / Saturation / Sharpness / Input signal / Sync / Tracking / Position / Colour temperature / Volume / etc. Front-centre 0 to 11 degrees Vertical : PC -30 to +30 degrees	
<b>Foot Adjuster Tilt Angle Keystone Correction</b>	Yes Yes	
<b>Source Search Auto Detection of RGB/Component Operation Panel Protected Function Password Protected Function (Security Function)</b>	Yes Yes	
<b>Analogue RGB I/O</b>	<b>Display Performance Input Signal</b>	Native 800 x 600 dots
	<b>Video Signal</b>	Separate signal Analogue (0.7 Vp-p, 75 ohm / Mac 0.714 Vp-p, 75 ohm)
	<b>Sync. Signal</b>	Separate (positive & negative, bi-polarity 2-5 Vp-p)/ Composite (positive & negative, bi-polarity 2-5 Vp-p)/ Sync-on-green (negative, 0.3 Vp-p)
	<b>Audio Signal</b>	500 mVrms / 47 k-ohm
<b>Input Terminal</b>	<b>Video</b>	D-sub 15pin x 1 Blue moulding
	<b>Audio</b>	RCA x 1 (White/Red)
<b>Output Signal</b>	<b>Video Signal</b>	Analogue (0.7 Vp-p, 75 ohm / Mac 0.714 Vp-p, 75 ohm)
	<b>Sync. Signal</b>	Separate (positive & negative, TTL) / Composite (positive & negative, TTL) / Sync. on green (negative 0.2-0.4 Vp-p)
<b>Output Terminal</b>	<b>Video</b>	D-sub 15pin x 1 Black moulding(Output signal : Computer * only)

<b>Video I/O</b>	<b>Display Performance Input Signal</b>	NTSC: 560 lines, PAL: 560 lines (Depend on observation of the multi-burst pattern)
	<b>Video Standard</b>	NTSC / NTSC4.43 / PAL / M-PAL / N-PAL / PAL60 / SECAM
	<b>Video Signal</b>	Composite Video (1.0 Vp-p / Sync.negative, 75 ohm) / S-Video (Luminous 0.714 Vp-p, Chrominous 0.286 Vp-p, 75 ohm) / Component Video (Analogue Y level 0.7 V, 75 ohm / Cr Cb level +/-0.35 V, 75 ohm / sync.negative 0.3 V or 3-state +/-0.3 V on Y) / RGB Video (0.7 Vp-p, 75 ohm / Mac 0.714 Vp-p, 75 ohm)
	<b>Audio Signal</b>	500 mVrms / 47 k-ohm
	<b>Composite Video:</b>	RCA (Yellow) x 1
	<b>S-Video:</b>	Mini DIN
	<b>Component Video:</b>	D-sub 15pin Blue moulding (in common with Analogue RGB connector)
	<b>RGB Video:</b>	D-sub 15pin Blue moulding (in common with Analogue RGB connector)
	<b>RCA x 1 (White/Red)</b>	(in common with Analogue RGB connector)
	<b>Audio</b>	Audio terminal
<b>Control I/O</b>	<b>USB I/O</b>	I/O Terminal I/O Speed Type B x1 (for K/B, control) Ver. 1.1
<b>Operating Temperature</b>	5 °C to 35 °C <41 °F to 95 °F> ( 20%-80% Humidity )	
<b>Operating Altitude</b>	0 m to 2286 m<0 ft to 7500 ft> ( over 1500 m / 4,921 ft :with High altitude mode)	
<b>Direct Power On</b>	Yes	
<b>Start-up Period</b>	about 5 seconds warm-up period: 30 seconds	
<b>Cool-down Period</b>	Instant off	
<b>Theft Proof Padlock &amp; Security Cable Hole Kensington Lock</b>	Yes	
<b>Power Supply Voltage</b>	100 - 240 V AC ±10%, 50/60 Hz	
<b>Power Consumption</b>	<b>Lamp On</b>	231 W
	<b>Standby</b>	5.8 W
<b>Dimensions</b>	<b>Exclude Feet (D x W x H)</b>	245 x 327 x 92 mm
	<b>Maximum Dimension (D x W x H)</b>	245 x 327 x 108 mm
	<b>Weight</b>	Approx. 6.0 € bs. / 2.7kg
<b>Fan Noise</b>	<b>High Brightness Mode</b>	35 dB
	<b>Low Brightness Mode</b>	28 dB
<b>Supplied Accessories</b>	Power Cable 1.8m Computer Cable 1.8 m D-sub 15pin (Male) - D-sub 15pin(Male) Remote Control Battery Manganese dry cell x2 Password Protect Sticker User's Manual Set	
<b>Optional Accessories</b>	<b>Spare Lamp</b>	ELPLP41
	<b>Air Filter Set</b>	ELPAF13
	<b>Soft Carrying Case</b>	ELPKS16B
	<b>50" Portable Roll Screen</b>	ELPSC06
	<b>60" Portable Roll Screen</b>	ELPSC07
	<b>80" Portable Roll Screen</b>	ELPSC08
	<b>100 Type Screen</b>	ELPSC10
	<b>Computer Cable, 1.8m</b>	ELPKC02
	<b>Computer Cable, 3.0m</b>	ELPKC09
	<b>Computer Cable, 20.0m</b>	ELPKC10
	<b>Component Video Cable, 3.0m</b>	ELPKC19
	<b>HD-TV Cable, 3.0m</b>	ELPKC22
	<b>Ceiling Mount</b>	ELPMB18
	<b>Ceiling Plate</b>	ELPFC03
	<b>Pipe 370mm</b>	ELPPF04
	<b>Pipe 570mm</b>	ELPPF05
	<b>Pipe 770mm</b>	ELPPF06
<b>Warranty</b>	UK: 1 year next business day on-site repair or replace Republic of Ireland: 1 year next business day on-site repair or loan	
Errors and omissions excepted, all specifications are subject to change without notice.		