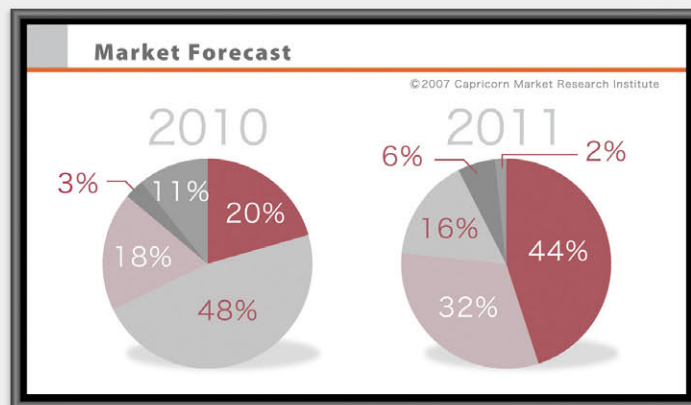
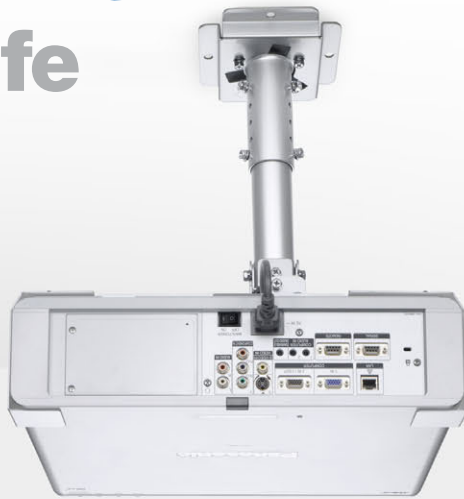


**Panasonic**  
ideas for life

**PT-FW100NTE**  
LCD Projector



**Long-Lasting  
Brightness**





# A Bright Choice for New Installations and Replacement Use

With its outstanding flexibility, the PT-FW100NTE makes an ideal replacement for existing ceiling-mounted systems. It requires little maintenance after installation, so total cost of ownership is low.

**ADVANCED TECHNOLOGIES THAT MAINTAIN HIGH BRIGHTNESS OVER A LONGER SERVICE LIFE**

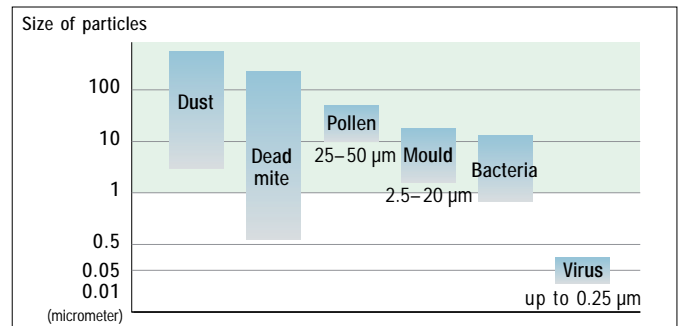
## Auto Rolling Filter (ARF) and Anti-Dust Design

A Micro Cut Filter, a high-efficiency electrostatic filter, with superior dust-collecting performance combines with Panasonic's original Auto Rolling Filter and anti-dust design to minimise brightness loss due to dust accumulation. The Auto Rolling Filter periodically winds the used section into the casing so that a fresh section of filter is exposed. Thus, peak performance is maintained. In developing the anti-dust design, Panasonic totally re-engineered the airflow path, from intake to exhaust, to create a cabinet that hermetically seals off the projector interior. This design and the Auto Rolling Filter team up to keep the air inside the projector dust-free at all times.



**Micro Cut Filter**

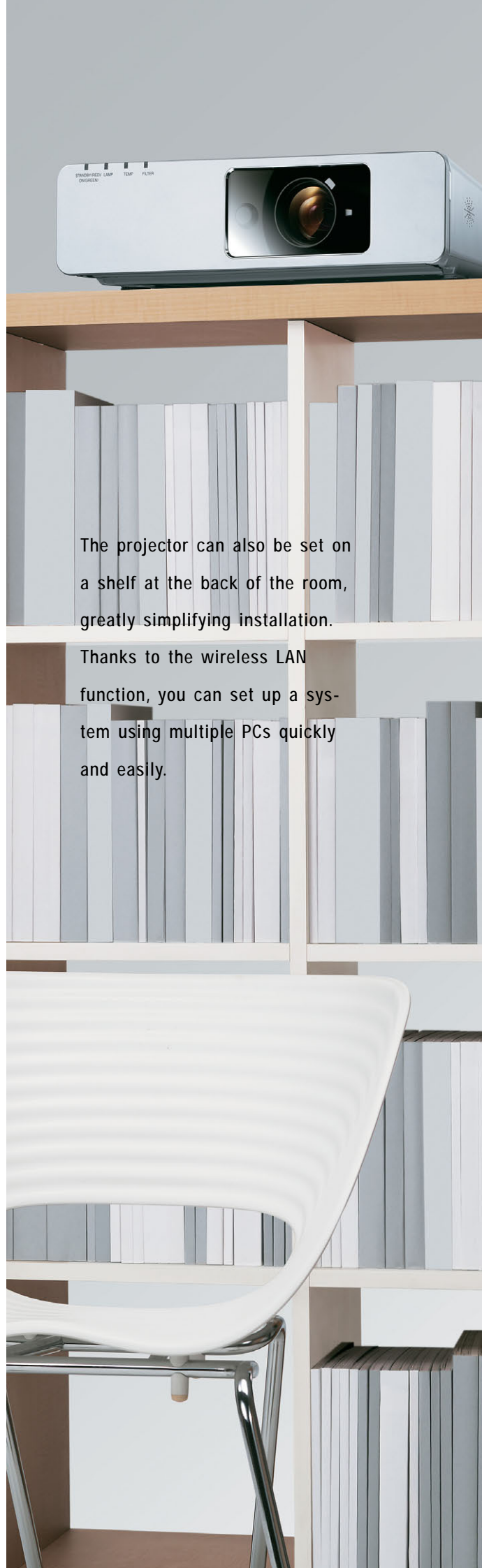
A high-efficiency electrostatic filter in the air intake section traps dust particles that are 1 microns\* or larger. By capturing approximately 7 times as much dust as our previous filters, it guards against optical blocks and reduces the penetration of dust into the interior to provide stable operation by preventing drops in brightness.



## New Drive System for Optimal Lamp Performance

Lamps used in a projector require much higher precision than ordinary household lamps. Panasonic employs a number of new technologies—including a new drive system—that help maintain optimal lamp performance for longer-lasting brightness.

The PT-FW100NTE is a high-performance LCD projector designed for use in fixed installations. It combines Panasonic's original Auto Rolling Filter with a new lamp drive system to deliver crisp, bright images over extended periods of time. The PT-FW100NTE features 0.74-inch diagonal high-performance LCD panels that enable large-screen projection of wide-aspect image sources. Both wireless and wired LAN functions respond to a variety of applications. The PT-FW100NTE also offers outstanding installation flexibility, with a 2x zoom lens and lens shift that accommodate everything from permanent ceiling-mounted use to simple placement on a shelf. Whether you're looking to install a new system or considering a replacement, Panasonic answers the call for projectors that provide long-lasting brightness, simple maintenance, and easy, casual use even in fixed installations.



The projector can also be set on a shelf at the back of the room, greatly simplifying installation.

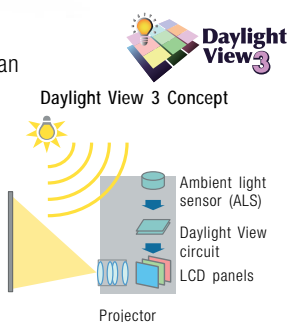
Thanks to the wireless LAN function, you can set up a system using multiple PCs quickly and easily.





### Daylight View 3 Technology: Enhanced Perception of Brightness and Contrast\*

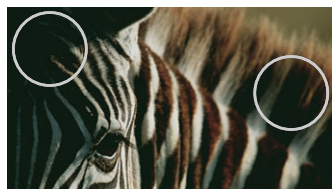
The PT-FW100NTE features Panasonic's Daylight View 3 technology, which uses an adaptive low-pass filter to optimise the dark parts of the image. This makes images seem brighter and higher in contrast, so they appear crisp, vivid and easy to see even in brightly lit rooms. Daylight View 3 also includes a built-in ambient light sensor that automatically detects room brightness and adjusts operation accordingly.



\* There is no actual change in the rated brightness or contrast ratio.



Simulated image with Daylight View 3 turned on. The brightness and contrast over the entire image appear to be enhanced, and details in shadow areas are reproduced clearly.

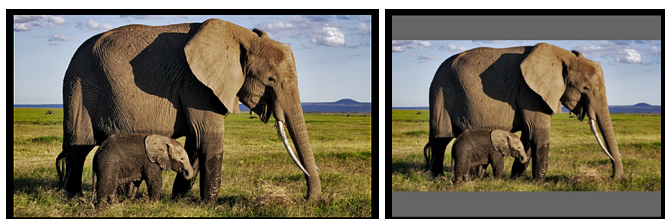


Simulated image with Daylight View 3 turned off. Overall contrast appears lower, and images in dark areas are blackened.

## WIDE SCREEN AND WIRELESS FUNCTIONS ADD VERSATILITY

### Wide Images

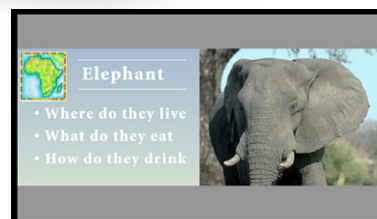
The PT-FW100NTE features wide-aspect LCD panels, which allow native reproduction of WXGA (1,280 x 800) images from a computer. This provides a visually powerful display of wide-screen images from DVD sources, as well as wide-screen images from wide-aspect computers, which will soon be the mainstream.



When projecting images from a source with a wide aspect ratio onto a 4:3 screen, the projector reduces the image to use only 75% of the screen area. Also, wide-screen projection makes it possible to display larger images where the room for the screen height is limited.

### Side-by-Side Function

The PT-FW100NTE can simultaneously display images from two sources\* onto a single screen. For example, you can display a PC image on the right and a video image on the left. Taking advantage of the PT-FW100NTE's wide-screen projection, this function gives you a host of new application possibilities to explore.



With the PT-FW100NTE's wide-aspect-ratio capability, you can project two large 4:3 images side by side.

\* This function is not effective for some source combinations.

### Easy Wireless Projection from Multiple PCs

With the PT-FW100NTE's wireless capability, you don't need cables to connect a PC. That means it's easy to bring in a laptop (with a wireless LAN function) and deliver a smooth, hassle-free presentation. You can make the settings for wireless connection quickly and easily using Wireless Manager ME 4.5 software. When the presentation is finished, Wireless Manager restores the PC to its previous LAN settings, so the PC is ready to reconnect to your LAN. Wireless Manager functions include Live mode and Multi-Live mode. In Live mode, the image projected is identical to the image seen on the PC screen. In Multi-Live mode, you can wirelessly connect with multiple PCs.



### Virtual Remote Control

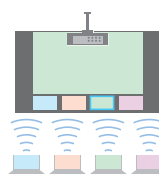
The same graphics used on the projector's remote control can be displayed on the PC screen. This makes it easy to operate the projector right from the PC, without having to use the remote control.

### A Wide Variety of Wireless Functions

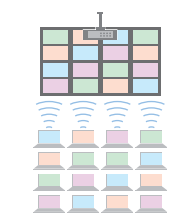
#### Four-window style



#### Index style (Four thumbnails)



#### Extended index style (16 thumbnails)



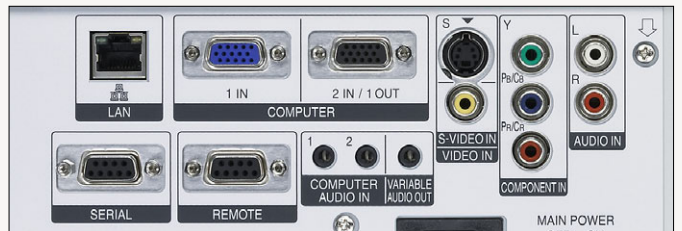
The PT-FW100NTE provides a host of convenient wireless functions, including Wireless Prompter (Secondary Display Transmission), selective area transmission and a 16-window index style that lets you project images from up to 16 PCs at the same time. Wireless transmission is possible from one PC to a maximum of eight projectors at a time.

### Windows Vista™/Macintosh Compatibility

Wireless Manager ME 4.5 is Microsoft® Windows Vista™ compatible, and also allows wireless projection (in Live mode only) from a Macintosh computer running Mac OS X (v10.4 or later).



The front panel covers the lens to keep it clean from dust, and conceals the controls to prevent accidental misoperation. It can be opened for easy access to controls even after the projector is installed on the ceiling.

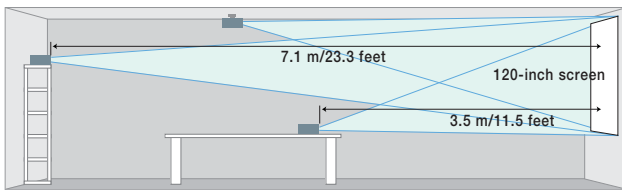


With features like separate audio inputs for the computer 1 and computer 2 terminals, and RCA pin jacks for the component signal input terminals, the PT-FW100NTE has been carefully designed for easy addition to existing systems, or convenient use as a permanent installation projector.

## CONVENIENT FEATURES FOR FIXED INSTALLATION

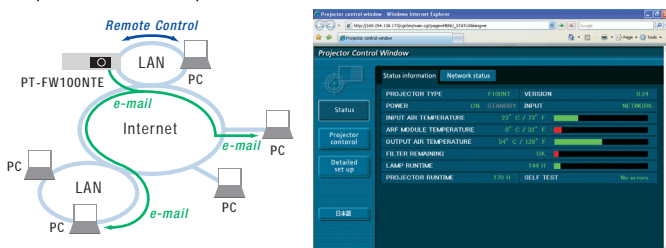
### Wide 2x Zoom and Horizontal/Vertical Lens Shift Give You More Installation Flexibility

The PT-FW100NTE can project a 120-inch wide-aspect image from any distance between 3.5 m (11.5 feet) and 7.1 m (23.1 feet). In new installations, this lets you accommodate a wide range of room sizes and shapes. When replacing existing projectors, the 2x zoom greatly expands your installation flexibility.



### Wired LAN: Web Browser Control/Monitoring, E-Mail Message Alert

Anybody can operate the PT-FW100NTE by remote control or monitor its status over a LAN network, because it is all done using the computer's familiar web browser. Furthermore, the projector sends an e-mail message to notify the operator when an error has occurred, or a lamp needs to be replaced.



### PJLink™ compatibility

The LAN terminals support PJLink™ class 1 connection. Control with the same specifications is also possible when used in a multi-projector system with projectors of another brand.



### Direct Power Off

Because the cooling fan keeps operating until the lamp is cooled, you can turn off the room's main power without waiting for the projector to cool down.

### Easy Lamp Replacement from the Rear

For easier maintenance, you can replace the lamp from the rear. The lamp is easily replaced even after the projector is installed on the ceiling.

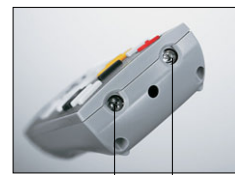


### Abundant connection terminals

Designed for versatility, the PT-FW100NTE comes equipped with a host of connection terminals. The RS232C specifications are the same as in previous Panasonic models, so replacement is quick and easy.

### Easy-to-Use Remote Control with Laser Pointer

The supplied remote control features a number of wireless projection controls, including Microsoft® PowerPoint® page up/down capability. The control range and distance have been extended, and the buttons are now larger and easier to use.

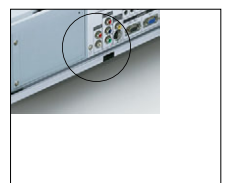


Equipped with two transmitters for an extended remote control range.



### Other Valuable Features

- Anti-theft features: Security anchor, user password, control panel lock and text superimposing
- HDTV compatibility
- Full compatibility with sRGB colour space for accurate colour reproduction (in natural mode)
- Picture mode selection (standard/dynamic/natural)
- Blackboard mode allows you to project images onto an ordinary classroom or conference room blackboard
- Shutter function for image/sound muting
- Selectable 17-language onscreen menu



Security anchor

### Ecology-Conscious Design

Panasonic works from every angle to minimise environmental impact in the product design, production and delivery processes, and in the performance of the product itself over its life cycle. The PT-FW100NTE Series reflects the following ecological considerations.

- Lead-free solder is used to mount components to the printed circuit boards.
- No halogenated flame retardants are used in the cabinet.
- No styrofoam is used in the packing materials.
- Lead-free glass is used for the lens.
- The packing case and operating manual are made from recycled paper.

## Specifications

<b>Power supply</b>	100–240 V AC, 50/60 Hz
<b>Power consumption</b>	350 W (Approx. 4 W in standby mode with fan stopped)
<b>LCD panel</b>	
<b>Panel size</b>	0.74" (18.8 mm) diagonal (16:10 aspect ratio)
<b>Display method</b>	Transparent LCD panel (x 3, R/G/B)
<b>Drive method</b>	Active matrix
<b>Pixels</b>	1,024,000 (1,280 x 800) x 3, total of 3,072,000 pixels
<b>Pixel configuration</b>	Stripe
<b>Lens</b>	
<b>Manual zoom</b> (1:1–1:2), manual focus, F 1.7–2.6, f 21.6–43.0 mm	
<b>Lamp</b>	250 W UHM™ lamp
<b>Projection size</b>	33–300 inches/838–7,620 mm diagonally (16:10 aspect ratio)
<b>colours</b>	Full colour (16,777,216 colours)
<b>Brightness</b>	3,000 lumens
<b>Centre-to-corner uniformity</b>	80%
<b>Contrast ratio</b>	400:1 (full on/full off)
<b>Resolution (RGB)*1</b>	1,280 x 800 pixels
<b>Scanning frequency</b>	
<b>RGB</b>	Horizontal: 15–91 kHz, Vertical: 50–85 Hz
<b>YPbPr</b>	480i (525i): fh 15.75 kHz; fv 60 Hz 576i (625i): fh 15.63 kHz; fv 50 Hz 480p (525p): fh 31.50 kHz; fv 60 Hz 576p (625p): fh 31.25 kHz; fv 50 Hz 720/60p (750/60p): fh 45.00 kHz; fv 60 Hz 720/50p (750/50p): fh 37.50 kHz; fv 50 Hz 1080/60i(1125/60i): fh 33.75 kHz; fv 60 Hz 1080/50i(1125/50i): fh 28.13 kHz; fv 50 Hz
<b>S-Video/Video</b>	NTSC, NTSC4.43, PAL-M, PAL60: fh 15.75 kHz; fv 60 Hz PAL, SECAM, PAL-N: fh 15.63 kHz; fv 50 Hz
<b>Optical axis shift**</b>	Vertical: ±51%, horizontal: ±24%
<b>Keystone correction range</b>	Vertical: ±30°
<b>On-screen menu</b>	17 languages: English, French, German, Spanish, Italian, Korean, Russian, Chinese, Japanese, Swedish, Norwegian, Danish, Portuguese, Polish, Hungarian, Czech, and Thai

<b>Installation</b>	Front/rear ceiling/desk (menu selection)
<b>Built-in speakers</b>	4 cm (round), x 1, 3.0 W (monaural) output power
<b>Terminals</b>	
<b>COMPUTER 1 IN</b>	D-sub HD 15-pin x 1
<b>COMPUTER 2 IN/COMPUTER 1 OUT</b>	D-sub HD 15-pin x 1 (input/output selectable using on-screen menu)
<b>COMPONENT IN</b>	RCA pin x 3
<b>VIDEO IN</b>	RCA pin x 1
<b>S-VIDEO IN</b>	Mini DIN 4-pin x 1
<b>AUDIO IN (COMPUTER 1)</b>	M3 (stereo) x 1
<b>AUDIO IN (COMPUTER 2)</b>	M3 (stereo) x 1
<b>AUDIO IN (COMPONENT/VIDEO/S-VIDEO)</b>	RCA pin (L, R) x 1 M3 (stereo) x 1 (variable)
<b>SERIAL REMOTE LAN</b>	D-sub 9-pin x 1 (RS-232C) D-sub 9-pin x 1 RJ-45 x 1, 10BASE-T/100BASE-TX/1000BASE-T
<b>Power cord length</b>	2 m (6'7")
<b>Cabinet material</b>	Moulded plastic (PC+ABS)
<b>Dimensions (W x H x D)</b>	432 x 124.5 x 319 mm (17" x 4-29/32" x 12-9/16") 6.0 kg (13.2 lbs.)
<b>Weight</b>	
<b>Operating environment</b>	
<b>Temperature</b>	0°–40°C (32°–104°F)
<b>Humidity</b>	20%–80% (no condensation)
<b>Wireless LAN</b>	
<b>Standard</b>	IEEE802.11b/g
<b>Operation range*3</b>	Approx. 30 m (98'5")
<b>Wireless Remote Control Unit</b>	
<b>Power supply</b>	3 V DC (AA battery x 2)
<b>Operation range*3</b>	Approx. 15 m (49'3") when operated from directly in front of the signal receptor
<b>Dimensions (W x H x D)</b>	48 x 163 x 24.5 mm (1-7/8" x 6-13/32" x 31/32")
<b>Weight</b>	117 g (4.1 oz) (including batteries)

\*1: Input signals that exceed this resolution will be converted to 1,280 x 800 pixels. \*2: Shift range is limited during simultaneous horizontal and vertical shifting. \*3: Operation range differs depending on the environment.

## Supplied Accessories

- Power cord
- Wireless remote control
- Batteries for remote control
- Wireless Manager ME 4.5 (CD-ROM)
- Safety wire rope

## Optional Accessories

- ET-LAF100 Replacement lamp unit
- ET-RFF100 Replacement filter unit
- ET-PKF100H Ceiling mount bracket for high ceilings
- ET-PKF100S Ceiling mount bracket for low ceilings



Replacement lamp unit  
ET-LAF100



Replacement filter unit  
ET-RFF100

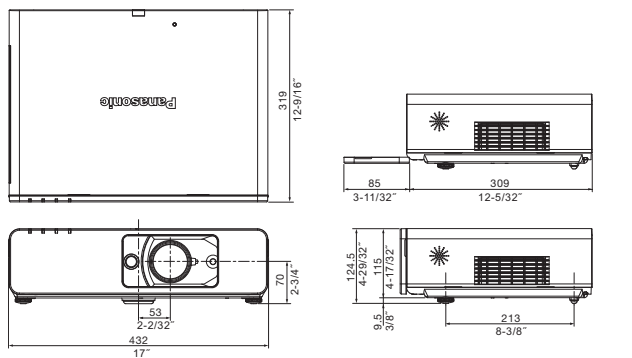


Ceiling mount bracket for high ceilings  
ET-PKF100H



Ceiling mount bracket for low ceilings  
ET-PKF100S

## Dimensions



## NOTES ON USE

- The projector uses a high-voltage mercury lamp that contains high internal pressure. This lamp may break, emitting a large sound, or fail to illuminate, due to impact or extended use. The length of time that it takes for the lamp to break or fail to illuminate varies greatly depending on individual lamp characteristics and usage conditions.
- The brightness of the lamp will gradually decrease with use.
- The projector includes consumable parts. The frequency of replacement for the lamp and other consumable parts will increase if the projector is subjected to extended, continuous use. For details, please consult a service representative.

## Projection Distance (16:9)

Project size (diagonal)	Projection distance (L)		Height from the edge of screen to centre of lens (H)
	Min (wide)	Max (telephoto)	
0.84 m / 33"	- / -	1.9 m / 6.2'	0 - 0.24 m / 0 - 0.8'
1.02 m / 40"	1.2 m / 3.8'	2.3 m / 7.6'	0 - 0.29 m / 0 - 0.9'
1.52 m / 60"	1.7 m / 5.7'	3.5 m / 11.5'	0 - 0.43 m / 0 - 1.4'
2.03 m / 80"	2.3 m / 7.6'	4.7 m / 15.3'	0 - 0.57 m / 0 - 1.9'
2.54 m / 100"	2.9 m / 9.6'	5.9 m / 19.2'	0 - 0.71 m / 0 - 2.3'
3.05 m / 120"	3.5 m / 11.5'	7.1 m / 23.1'	0 - 0.86 m / 0 - 2.8'
3.81 m / 150"	4.4 m / 14.5'	8.8 m / 28.9'	0 - 1.07 m / 0 - 3.5'
5.08 m / 200"	5.9 m / 19.3'	11.8 m / 38.6'	0 - 1.43 m / 0 - 4.7'
7.62 m / 300"	8.9 m / 29.1'	17.7 m / 58.1'	0 - 2.14 m / 0 - 7.0'

## To use network functions, a PC is required that meets the conditions given below:

OS:	Microsoft® Windows® 2000 Professional, Windows® XP Professional, Windows® XP Home Edition, Windows Vista™, Apple Mac OS X 10.4 (Tiger)
Web browser:	Windows®: Internet Explorer 6.0 or later, or Netscape Communicator 7.0 or later. Mac OS: Safari 2.0 or later
CPU:	Windows®: Intel® Pentium® III or higher, or other compatible processor (1 GHz or higher is recommended). Mac OS: Intel® Core™ Duo.
Memory:	256 MB or more
Free hard disk space:	60 MB or more
CD-ROM drive:	CD-ROM drive or DVD drive
Wireless LAN:	IEEE 802.11b/g compatible (built-in wireless LAN system or external IEEE 802.11b/g LAN card must be installed and running normally.)
	<b>NOTE: Some IEEE 802.11g/b wireless LAN may not allow connection to the projector.</b>
Wired LAN connector:	RJ-45
	<b>NOTE: Use Category 5e (or higher) cables for 1000BASE-T connection.</b>
	Visit the Projectors Global Web Site shown below for the latest information.

# Panasonic

Projectors Global Web Site

<http://panasonic.co.jp/pavc/global/projector>

Weights and dimensions shown are approximate. Specifications are subject to change without notice. Product availability differs depending on region and country. This product may be subject to export control regulations. UHM is a trademark of Matsushita Electric Industrial Co., Ltd. Intel and Pentium are registered trademarks of Intel Corporation. Microsoft, Windows Vista and Windows are other registered trademarks or trademarks of Microsoft Corp. in the United States and/or other countries. Apple, Mac, Mac OS, Macintosh and Safari are trademarks of Apple Inc., registered in the U.S. and other countries. All other trademarks are the property of their respective trademark owners. Projection images simulated.

