

Dream Bee

The milestone Video-Projector



- ✓ *Native HDTV resolution of 1920x1080 pixels*
- ✓ *Integrated VXP™ video processing*
- ✓ *Rainbow-free 3-chip engine*
- ✓ *Ultra fast 0.7" D-ILA panels*
- ✓ *VRS™ video enhancement*

You've never seen this before !



Dream Vision
WE MAKE THE WORLD DREAM



The new Dreamvision projector will The DreamBee features a new concept the first time a cinema grade picture

1080p
Full HD

Entirely devoted to simplicity and ease of use, the DreamBee adopts the classic DreamVision home style. You can connect any source to your DreamBee projector and choose between five video inputs that support video standards from the NTSC or PAL up to the most demanding HDTV 1080p formats and tomorrow's entertainment programs.

Thanks to the use of the latest display technologies and video processing, the DreamBee can fill very large screens with a smooth picture and an unprecedented level of details.



New 3-Chip D-ILA™ System

The DreamBee features three Full HD panels (1920x1080 pixels), one per color channel: green, red and blue. The innovative reflective liquid crystal panel is now processed into a 0,7 inches diagonal plate with a pixel pitch of 8,0 μm to match the most demanding HDTV resolution available and to achieve an unsurpassed industry contrast ratio of 20,000:1.

The DreamBee reproduces without artifice the richest and deepest black level, whichever the movie, whichever the scene. Moreover, choice can be made between five different color presets, two of which are customizable.



D-ILA
4ms TRUE MOTION

high contrast



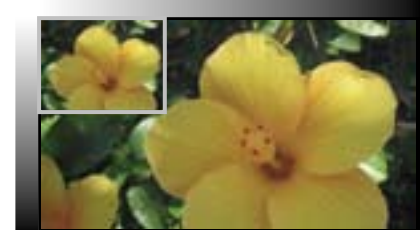
standard technology



Enjoy every source into Full HDTV resolution

The built-in video processor is enhanced by the Visual Excellence Processing (VXP™) technologies and supports any standard from 480i to 1080p.

- Reality Expansion™ 10-bit internal video scaler
- TruMotionHD™ de-interlacing methods (Inverse telecine processing, film mode detection)
- FineEdge™ multi-directional edge adaptive processing
- FidelityEngine™ noise reduction and image enhancements.



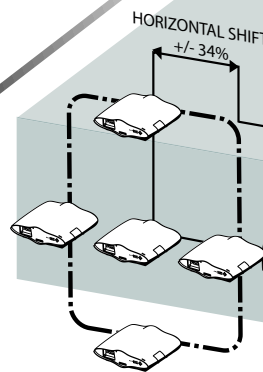
480i to 1080p format



Bring a cinema grade picture wherever you want

The DreamVision DreamBee projector has been specifically conceived to operate almost anywhere from the screen. Its light weight makes the projector easily transportable.

The versatile, large horizontal and vertical optical shift, associated with the new cooling system reduce the DreamBee installation to a minimal space requirement. In addition to this ease of installation, the state-of-the-art French design (by Le Porcher) makes this model the ideal choice that would transform any room into a living theater.



make your deepest dreams come true.
cept of the Home Cinema, bringing for
re to your whole family.



DreamBee Pro version

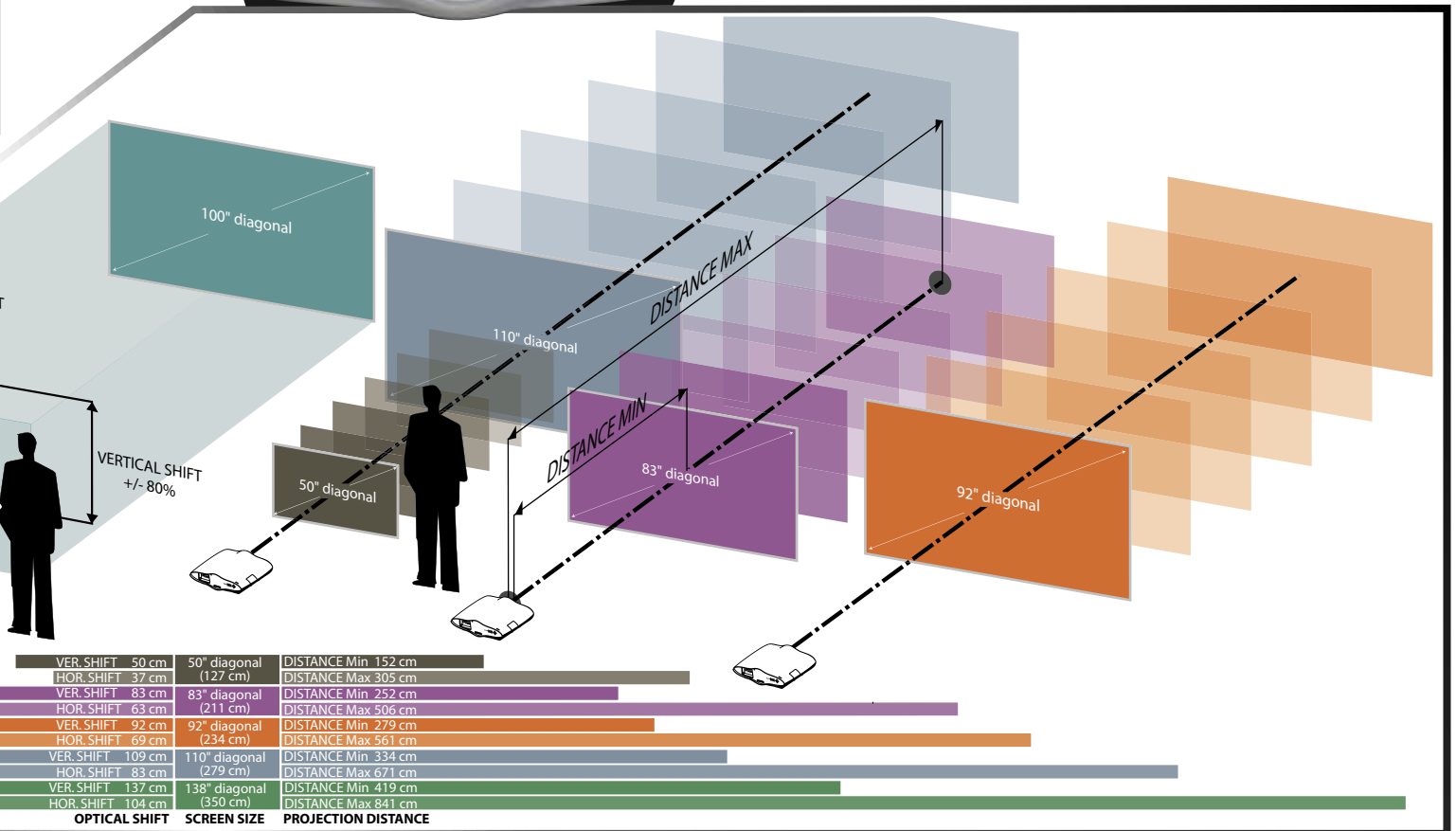
The *DreamBee Pro* bundle will please the most demanding home cinema aficionados with its external 10-bit high-definition video processor, giving access to advanced video source management and professional adjustments such as VRS video processing, film-grade de-interlacing methods, dedicated game modes. Thanks to the four extended Plug and Play HDMI inputs (amongst others), the *DreamBee Pro* features complete connectivity, enjoyable by the whole family.

Additional Features

- Up to 12 inputs: 4x HDMI, 2x S-Video, 2x Composite, 2x Component, 1x RGBHV, 1x SD-SDI
- Special Pan-scan and digital zoom adjustments
- Advanced de-interlacing methods
- Advanced game modes dedicated to standard and high definition game console
- Advanced cadence detection
- AV Lipsync™ technology
- VRST™ technology

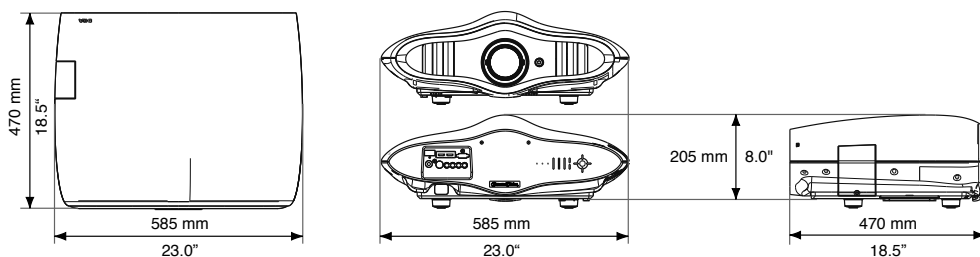


HD video processor and scaler



DreamBee

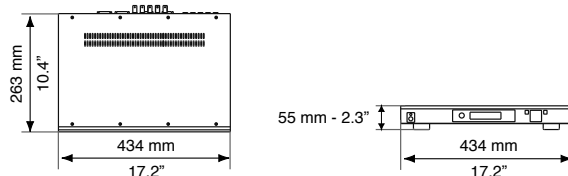
Light engine	
D-ILA Technology	3x 0.7" panels (using reflective Liquid Crystal On Substrate - LCOS technology)
Aspect Ratio	16:9
Response time	4 ms
Native Resolution	Full HD - 1920 x 1080 pixels
Native Contrast	20,000:1
Light source	200 W NUP lamp - 2,000 hours lifetime
Characteristics	
Projection Lens	16 full glass elements
Through Ratio	1.4:1 - 2.8:1
Optical Shift	-80% +80% vertically -34% +34% horizontally
Screen range	50-250 inches diagonal
ANSI Brightness	1,000 lumens
Inputs	
	2x HDMI with HDCP
	1x Component
	1x Composite
	1x S-Video
	RS-232C
Power and Mechanical Characteristics	
Power Consumption	280W (3W in standby mode)
Power Supply	AC100-240V 50/60Hz
Noise level	22 dB
Dimensions (WxHxD)	585 x 205 x 470 mm - 23.0" x 18.5" x 8.0"
Net Weight	11.0 kg - 24.5 lbs



DreamBee PRO

VRS TECHNOLOGY

Extended inputs	
Video	4x HDMI , 2x S-video, 2x Composite Video, 2x Component, 1x RGBHV/Component, 1x SD-SDI (optional)
Audio	4x HDMI, 2x Coaxial Digital, 2x Optical Digital, 1x Analog stereo L/R
Outputs	
	1x Digital HDMI , 1x Analog Video 5-BNC, 1x Coaxial Digital audio, 1x Optical Digital audio
Power and Mechanical Characteristics	
Power Consumption	< 30W
Power Supply	AC100-240V 50/60Hz
Dimensions (WxHxD)	434 x 55 x 263 mm - 17.2" x 2.3" x 10.4"
Net Weight	2.9 kg - 6.4 lbs



Contact information
 TEC - DreamVision
 7, rue La Caille, 75017 Paris, France
 Tel +33 1 42 29 44 44
 E-mail sales@dreamvision.net
 www.dreamvision.net