

LT380/LT280

High brightness, multi function LCD projector with LAN support provides effective, impressive presentations for conferences and educational seminars



- **Lightweight: 3.5 kg**
- **High brightness: 3000 ANSI lumens (LT380), 2500 ANSI lumens (LT280)**
- **XGA (1024 x 768 dots) resolution**
- **Automatic Vertical Keystone Correction and 3D Reform function**
- **Wall Colour Correction**
- **High-Speed Wireless & Wired LAN Capability**
- **Security functions**





LT380/LT280

LAN

3000 ANSI lm
LT380

Multi Function

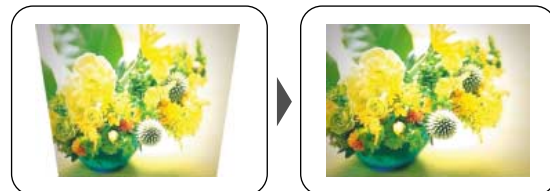
High brightness

Although it has a highly transportable, lightweight body weighing 3.5 kg, it achieves high brightness of 3000 ANSI lumens, which is sufficient for use in a bright room. (This is for the LT380. The brightness is 2500 ANSI lumens for the LT280.)

Automatic Vertical Keystone Correction and 3D Reform function

If the position of the screen is too high or low, the projector must be installed at an angle, resulting in trapezoidal distortion of the projected images. The acceleration sensor built into the main unit senses the inclination of the unit in the vertical direction and then corrects for any trapezoidal distortion in the projected images automatically (+/- 40 degrees from the projection angle). The user can set up the projector very quickly and easily since it is not necessary to correct it manually. With the 3D Reform function, it is also possible to correct trapezoidal distortion manually by clicking the four corners of the projected image with a mouse connected to the main unit to project square images.

Automatic Vertical Keystone Correction



3D Reform function



Wall Colour Correction

Without a screen, the projected images may be affected by the colours of the wall or blackboard. This projector has built-in colour correction for projecting images on a coloured wall or blackboard, so that the colour tones of the projected images can be approximated to those projected on a white screen. The following eight colour options are available as user selections: blackboard, blackboard (gray), light yellow, light green, light blue, sky blue, light rose and pink.



High-Speed Wireless LAN (IEEE802.11b/g) and Wired LAN (RJ-45 10BASE-T/100BASE-TX) Capability

Images on the PC display can be projected without a connecting cable by installing Image Express Utility 2.0 (IEU 2.0) on the PC as well as loading the wireless LAN card (option) on the projector respectively. IEU 2.0 is dedicated software that is attached to the projector. The projectors support IEEE802.11g in addition to the ordinary IEEE802.11b. Smoother image projection has been achieved by the unique compression method developed by NEC. The projectors support wired LAN with an integrated RJ-45 connector.

Low Noise 35/30 dB

By selecting the power saving "Lamp Eco Mode", power consumption can be saved and noise level can be reduced to 30 dB, so that the user can hold conferences or classes in a quiet environment without noises from the fan (35 dB in normal use).

Security function prevents unauthorized use or theft

By using passwords, the projector cannot be used by unauthorized persons. Once the security function is in effect, a message requesting the password is displayed when the power of the main unit is turned on. It is impossible to project an image unless the proper password is entered.

Wireless LAN functions

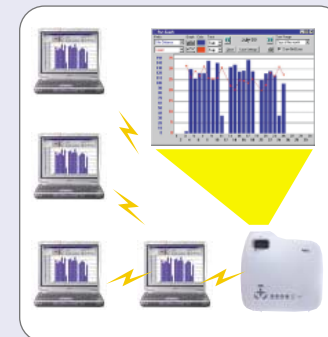
High-speed, high-quality image transfer in a wireless environment by Image Express Utility 2.0 (Ver. 2.0)

A presenter (a PC transmitting images to the projector) can be switched

With an ordinary projector, it is necessary to reconnect the RGB cables when the presenter changes. Conversely, this projector can change presenters with a single operation. The person who wants to speak can send images from his/her PC to the projector just by clicking the "Become a Presenter" button.

Images transmitted from a PC to the Projector can be monitored with other PCs

A presenter can transmit images to not only the projector but also participants' PCs. For a presentation in a large conference room, participants can confirm details of the projected images, such as small characters, etc., with their own PCs. A presenter can distribute files or documents used in the presentation through the network.



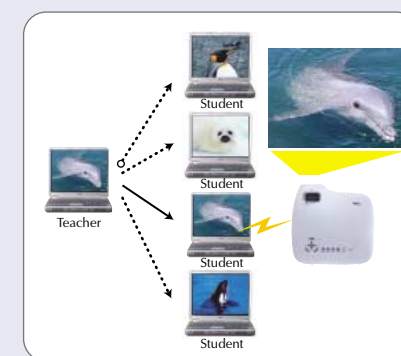
Projected images can be stored in memory and notes can be added in a text field.

In addition to viewing the projected images on your own PC, you can also store the images on your PC. Since some margin space is available, you can take notes or provide the minutes of a meeting.



Training mode

An administrator (a teacher) can switch images on the participants' (students') PCs to be projected on a screen. With the Training mode, a single PC can control PCs that project images onto a screen. You can switch the PCs that project image or pause communication with the projector.



Extend supported network form

Supporting a meeting over multiple segments

With Image Express Utility 2.0 (Ver. 2.0), it is possible to conduct meetings over segments and across different networks. Since the projector supports a variety of network configurations, it can easily be introduced into environments where networks have already been constructed.

The Automatic Search function searches for network projectors

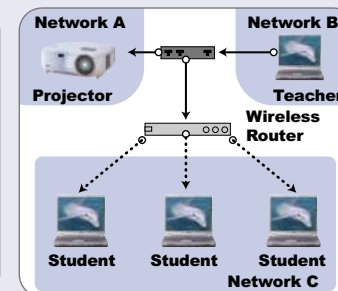
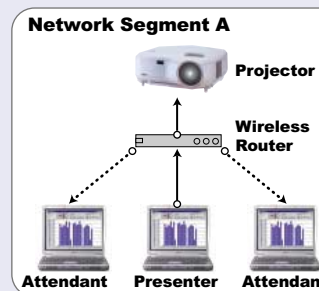
Even if the desired projector is on another network, it can be found with the Automatic Search function.

Image Express Utility 2.0 (Ver. 1.0) of the previous version

"Meeting" is available in the same network.

Image Express Utility 2.0 (Ver. 2.0) of the new version attached to the current models

"Meeting" is available over network segment.



Multiple IN/OUT terminals

The projector is equipped with a number of input/output terminals, including component (RCA) and a PC card slot (for viewing digital images such as JPEG and BMP) as well as DVI-D* to support a variety of image sources.

*DVI-D : LT380 only



LT380

Specifications

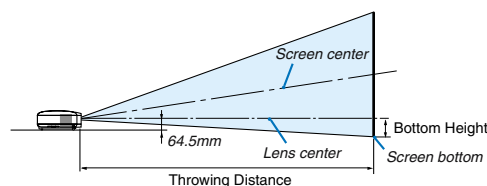
		LT380		LT280	
LCD Panel*1		0.8-inch (1,024x768) p-Si TFT LCDx3 active-matrix with MLA Aspect Ratio4 : 3		0.7-inch (1,024x768) p-Si TFT LCDx3 active-matrix with MLA Aspect Ratio4 : 3	
Lens	Zoom	Manual Zoom Ratio : 1 to 1.2			
	Focus	Manual Focus (F=1.7 to 2.0) (f=24.2mm to 29.0mm)			
Projection Distance		0.71m to 10.9m (Tele) 0.69m to 9.0m (Wide)		Manual Focus (F=1.7 to 2.0) (f=21.6mm to 25.9mm)	
Projection Angle		10.3° to 11.2°(Wide) / 8.5° to 9.2°(Tele)		0.72m to 10.9m (Tele) 0.71m to 9.0m (Wide) 11.5° to 12.1°(Wide) / 9.5° to 10.0°(Tele)	
Lamp	Normal Mode	200W DC			
	Eco Mode	152W			
Lamp Life*2	Normal Mode	2,000H			
	Eco Mode	3,000H			
Light Output		3,000 ANSI lumens		2,500 ANSI lumens	
Contrast Ratio (White/Black)		2,200 ANSI lumens		1,900 ANSI lumens	
Computer Input		3 Input (2 D-Sub Mini 15pin, DVI-D)		2 Input (2 D-Sub Mini 15pin)	
Quietness	Normal Mode	35 dB			
	Eco Mode	30 dB			
Net Weight		Approx. 3.5 kg			
Image Size		21inch to 300inch (0.53m to 7.62m) diagonal			
Maximum Resolution		UXGA (1,600 x 1,200) with Advanced AccuBlend			
Synchronization Range		Horizontal		Vertical	
Video Bandwidth		15kHz to 100kHz (RGB: 24kHz or over)			
Colour Reproduction		48Hz to 120Hz			
		RGB: 100MHz			
		Full Colour, 16.7 Million Colours Simultaneously			
		T.M.D.S Specification, Max Resolution: SXGA @60Hz			
		VGA, SVGA, XGA, SXGA, UXGA			
		0.7Vp-p/75Ω			
		4.0Vp-p/TTL Polarity			
		4.0Vp-p/TTL Level			
		1.0Vp-p/75Ω(With Sync) Negative Polarity			
Input Terminals	3 Computer Input	1 DVI-D (LT380 Only & Not With Audio)		RGBHV	
		2 D-Sub Mini 15pin		RGB	
				H/V Sync	
				Composite Sync	
				Sync on G	
	3 Component Input	1 Stereo Mini Jack [Sharing With Computer 1,2&3 (3:LT380 only) Input]		Stereo L/R	
		3 RCA pin (Green,Blue,Red)		Green(Y) is Also Available for Video Input	
		2 D-Sub Mini 15pin (Sharing With Computer 1,2&3 Input)		Y	
				Cb - Cr (Pb · Pr)	
				Compatible signals	
	2 Video Input	2 RCA pin		Y	
		Yellow		Composite Video	
		Green		NTSC/NTSC4.43/PAL/PAL-N/PAL-M/PAL-60/SECAM	
	1 S-Video Input	Mini DIN-4pin		Y	
		Audio Input is Sharing With Component		Same With Component	
1 PC-Card Slot	PC-Card		1.0Vp-p/75Ω		
	Wireless LAN-Card		0.286Vp-p/75Ω		
1 LAN Port	RJ-45		Same With Component		
			PCMCIA Type II		
Output Terminals	Monitor Output		D-Sub Mini 15pin		
	Audio Output		Stereo Mini Jack		
Control Terminals	USB Port		Type A		
	PC Control		D-sub 9pin		
Built-In Speaker		1W Monaural			
Cornerstone Correction	Horizontal		Approx. ± Max 35 degrees (Less than XGA resolution, aspect 4:3)		
	Vertical		± Max 40 degrees		
Keystone Correction	Horizontal		Manual Approx. ± Max 27 degrees (Less than XGA resolution, aspect 4:3)		
	Vertical		Automatic/Manual ± Max 40 degrees		
Environment	Operational Temperatures		5°C to 40°C, (Eco mode selected automatically at 35°C to 40°C, operational temperatures during use of wireless LAN card: 5°C to 35°C), 20 to 80% Humidity (Non-Condensing)		
	Storage Temperatures		-10°C to 50°C, 20 to 80% Humidity (Non-Condensing)		
Power Requirement		100 to 240V AC, 50Hz/60Hz			
Input Current		3.3A to 1.4A			
Power Consumption		292W/230W(Eco Mode)/16W(Standby Mode)/10W(Power Save Mode)			
Regulations	For United States		UL Approved (UL 60950-1), Meets FCC Class B Requirements		
	For Canada		UL Approved (CSA 60950-1), Meets DOC Canada Class B Requirements		
	For Australia/New Zealand		Meets AS/NZS CISPR 22 Class B		
	For Europe		Meets EMC Directive (EN55022, EN55024, EN61000-3-2, EN61000-3-3), Meets Low Voltage Directive (EN60950-1, TUV GS Approved)		
Dimensions (WxHxD)		294mm x 120mm x 288mm (Not Including Protrusions)			

*1 : LCD Panel technology consists of fine picture cells with more than 99.99% of the cells being active.

*2 : Lamp life is defined as the average time span for the brightness of the lamp to be reduced by half, it does not refer to the warranty period for the lamp.

All specifications are subject to change without notice.

Throwing Distance and Image Size



LT380

Screen Size (inch)	Throwing distance	Bottom Height
30	0.9m	64mm
40	1.2m	86mm
60	1.8m	129mm
80	2.4m	171mm
100	3.0m	214mm
120	3.6m	257mm
150	4.5m	322mm
200	6.0m	429mm
300	9.1m	643mm

LT280

Screen Size (inch)	Throwing distance	Bottom Height
30	0.9m	47mm
40	1.2m	62mm
60	1.8m	93mm
80	2.4m	125mm
100	3.0m	156mm
120	3.6m	187mm
150	4.5m	234mm
200	6.0m	311mm
300	9.0m	467mm

The actual throwing distance may vary within plus or minus 5%. The indicated distance is a design value only.

Terminal Panel

LT380



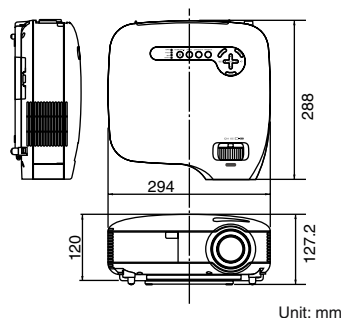
LT280



Remote Control



Dimensions



Unit: mm

Soft Case

(basic accessory)



Options

Replacement lamp V175LP



Wireless LAN Card



NWL-100A : For North America & Mexico, Taiwan,
NWL-100E : For Europe, Asia, Australia & New Zealand.

(For details, refer to the NEC website)
<http://www.nec-pj.com>

KEKI-0509-171RR

for more information
www.nec-pj.com

XGA is a registered trademark of International Business Machines Corporation.
All other trademarks are the property of their respective owners.
The images in this brochure are samples.
This brochure uses recycled paper.

Empowered by Innovation

NEC