

SHARP[®]



experience the

magic



Now, for every heart that has ever leaped as
the lights dimmed...

for every soul that has ever soared as the music opened...

for every film enthusiast, who has longed to enjoy a more authentic
movie theater experience in their own home...

Your time has come.

SharpVision® DLP™ Front Projectors.

Movie reproduction so lifelike, it will stimulate your
senses... and inspire your imagination.

Capture all the romance and breathtaking magic of the silver screen brought to you in the comfort and privacy of your own home—thanks to Sharp's visionary engineering. Since the inception of home theater, Sharp has pioneered **ground-breaking innovations** and continues to meticulously engineer award-winning projectors using Texas Instruments' DLP™ technology. Sharp's proprietary Computer & Video Integrated Composer (CV-IC) System II, together with the revolutionary DLP™ chip, partner to



form the "magic" behind Sharp's new generation of exceptional DLP™ front projectors.

Brilliant clarity. Superior contrast. Amazing brightness. Exquisite high definition performance with the specifications to prove it. True **cinematic enchantment** that begins the moment the first breathtaking frame opens upon the screen.



look behind the **magic**



Imagine coming home, settling into your favorite chair and at the touch of a button, unleashing all the action and excitement of your favorite films right into your viewing room. Instantly, your home is transformed into a **private movie theater** with command performances literally at your fingertips.

At the heart of this excitement is a SharpVision DLP™ projector. At first glance, the sleek design of these top performers belies the profusion of technology inside. Sharp DLP™ projectors boast high contrast capability with wide-screen image reproduction so detailed and **so lifelike**, even the most critical home theater purist will be astounded. Consider the new optical engines which dramatically reduce exposure to maximize contrast and picture brightness.

And Sharp's new Pure Color Reproductivity Design, ensures reds remain true to their original cinematic hues, never drifting orange or vermillion. Add a whisper-quiet fan, manual zoom, a lens shift function for flexible installation, a multi-step color temperature adjustment and six-position picture setting memory for the new front projector of a home theater enthusiast's dreams.



Demanding videophile or new home theater fan, you'll enjoy movies the way they were meant to be experienced when you choose a Sharp DLP™ Front Projector. Lights! Camera!...Action! —like you've never seen before.



go beyond the **romance**



Now, the magic that swept you away the very first time you viewed your favorite movie is yours to bring home. Sharp Front Projectors allow you to **transform any living space** into the ideal home theater environment. Enjoy high resolution entertainment whenever and wherever you want it. Escape on an intergalactic adventure. Befriend a young wizard. Build a mystical baseball field. Fall back in time and **fall in love**. Set sail. Saddle up. Give chase. Follow a girl and her little dog to a place unlike any other. Thrill to all the sweeping images and **heartstopping action** of your favorite movies in any size space, whether your room can accommodate a 40" (diagonal) or up to 300" (diagonal) image in brilliant, crisply detailed quality. It's all up to you. You're the audience. You're the director. You're the critic whose expectations will be wonderously exceeded.

It all happens at **your place**...the moment you raise the curtain on your new Sharp projector. Movies better than you remembered them. Colors more vivid. Images more detailed. Cinematic presence so lifelike, you may forget exactly where you are...**Home**.



get inside the

action



The DLP™ Advantage

Brightness—DLP™ projection systems outshine the alternatives because, being mirror-based, they use light more efficiently.

While other technologies lose a certain amount of light in transit, the microscopic mirrors in a DLP™ projection system bring **more light** from lamp to screen. The difference is plain to see. With DLP™ technology, home entertainment becomes the visually stunning experience it should be.



Clarity—DLP™ technology comes closer than any other display solution to reproducing the exact mirror image of its source material. That's why images projected by DLP™ technology are always **crystal clear**.

Color—DLP™ technology reproduces **vibrant colors** with a breathtaking all-digital image. In televisions and home theater systems, DLP™ projection creates incredibly rich blacks and darker shades with a virtually unmatched contrast ratio.



SharpVision® DLP™ Front Projectors

...there's no place like

[home](#)



SHARP VISION®

Design and specifications subject to change without notice.
Limited Warranty: 1 year parts and labor.
Sharp and SharpVision are registered trademarks of Sharp Corporation.



DLP™, the DLP™ logo and the
DLP™ medallion are trademarks
of Texas Instruments.

SHARP®

Sharp Electronics Corporation
Consumer Electronics Group
Sharp Plaza
Mahwah, NJ 07430-2135
1-877-388-SHARP
www.sharppusa.com

©2004 Sharp Electronics Corporation
Printed in U.S.A.
FP-06-101/08-04

SHARP VISION™



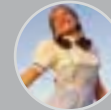
XV-Z12000 HOME THEATER PROJECTOR

This high definition DLP™ projector represents the pinnacle in home theater.

Utilizing the DLP™ HD2+ chip from Texas Instruments and Sharp's advanced proprietary Computer Video & Integrated Composer (CV-IC) System II technology, the XV-Z12000 boasts a 5500:1 contrast ratio and a high brightness 900 ANSI lumens rating, delivering one of the best pictures available in consumer home theater today.



- High Contrast Ratio 5500:1 (in High Contrast Mode) enhances the XV-Z12000's ability to discern fine, detailed differences between the darkest and lightest colors and provides superior black level reproduction.
- 900 ANSI Lumens (in High Brightness Mode) is an ANSI lumens rating that delivers a bright, beautiful picture.
- Native 720p High Definition Capability (compatible with 1080i and 720p HD signals).
- 7 Segment 5x-Speed ND (Neutral Density) Color Wheel achieves flicker-free, high-grade images and accurate color reproduction.



- CV-IC System II - Sharp's proprietary 2nd generation advanced video scaler circuitry up-converts standard definition signals to the native 720p HD resolution of the projector (1280 x 720).
- Powered Iris Switchover Function - (High Contrast Mode/Middle Mode/High Brightness Mode) instantly changes multiple brightness and contrast settings with the touch of a button. This allows the greatest flexibility for varying home theater environments.
- Manual Optical Lens Shift simplifies installation adjustments without the need for changing the projector mount.
- DVI-I with High-bandwidth Digital Content Protection (HDCP) Terminal ensures compatibility with the new generation of high definition set-top boxes.
- Home Theater Conveniences include easy installation and 33 dB whisper quiet operation (using the Power Save mode).

XV-Z12000

HDTV Compatible	1080i (in Advanced Intelligent Compression), 720p, 480i/p
Aspect Ratio	4:3/16:9
Resolution	1280 x 720
Brightness	900 ANSI Lumens (in High Brightness Mode)
Contrast Ratio	5500:1 (in High Contrast Mode)
Maximum Screen Size	300" (Diagonally Measured Using 16:9 Aspect Ratio)
Projection Distance	100" Screen Throw Distance 14'3" - 17'2"
Display Method	DLP™ 0.8" HD2+ from Texas Instruments
Inputs	2 Component/RGB (5 RCA) 1 Composite Video (RCA) 1 S-Video (4-Pin DIN) 1 DVI-I/HDPCP (Component and Digital/Analog RGB) 1 Wired Remote Control (3.5mm Mini Jack) 1 RS-232C Serial Port (9-Pin D-Sub)
Anamorphic DVD Capable	Yes
3D Y/C Digital Comb Filter	Yes
Manual Optical Lens Shift	Yes, 1 Full Screen Height
Film Mode	Yes, 24 Hz Progressive Format
Computer Compatibility	SXGA, XGA, Mac® 21"/19" (in Advanced Intelligent Compression), SVGA, VGA, VESA, Mac® 16"/13"
Video System	NTSC/NTSC4.43/PAL/PAL (60Hz)/PAL-M/PAL-N/SECAM
Lens Type	1-1.35x Manual Zoom and Focus
Projection Lamp Type/Life	270W SHP/up to 2000 Hours
Fan Noise	33 dB (in Eco Mode)
Gamma Correction	Yes
2-D Digital Keystone Correction	Yes
Color Temperature Adjustment	Yes
Detachable AC Cord	Yes
Optional Ceiling Bracket	AN-CM250
Wireless Light-Up Remote Control	Yes
Optional Digital Decoder Required	Yes (for HDTV)
Built-in Audio	None
Power Source	100-240V AC, 50/60Hz (Multi-Voltage)
Power Consumption	365W (0.1W in Standby)
Dimensions (w x h x d)	18 11/16" x 7" x 16" (Main Body Only) 18 11/16" x 7" x 19 1/2" (Including Terminal Cover)
Weight	20.7 lbs.
UPC	074000364028

SHARP VISION®

Design and specifications subject to change with notice.
Limited Warranty: 1-year parts and labor.
Sharp and SharpVision are registered trademarks of Sharp Corporation.

Mac® is a trademark of Apple® Computer, Inc., registered in the U.S. and other countries.



DLP™, the DLP™ logo and the DLP™ medallion are trademarks of Texas Instruments.

SHARP®

Sharp Electronics Corporation
Consumer Electronics Group
Sharp Plaza, Mahwah, NJ 07430-2135
1-877-388-SHARP
www.sharppusa.com
©2004 Sharp Electronics Corporation
FP-02-101/08-04

SHARP VISION™



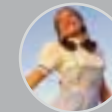
XV-Z10000 HOME THEATER PROJECTOR

The XV-Z10000 high definition DLP™ front projector utilizes the DLP™ HD2 chip from Texas Instruments and Sharp's advanced proprietary Computer Video & Integrated Composer (CV-IC) System II technology.

This 16:9 projector boasts an aggressive 2600:1 contrast ratio delivering an amazing home entertainment experience.



- Switchable High Contrast (2600:1)/High Brightness (800 ANSI Lumens) Mode optimizes picture quality based on ambient light conditions.
- Native 720p High Definition Capability (compatible with 1080i and 720p HD signals).
- 6-segment 5x-Speed Color Wheel provides accurate color reproduction.
- CV-IC System II Sharp's proprietary 2nd generation advanced video scaler circuitry up-converts standard signals to the native 720p HD resolution of the projector (1280 x 720).



- Manual Optical Lens Shift simplifies installation adjustments without the need for changing the projector mount.
- DVI-I with High-bandwidth Digital Content Protection (HDCP) Terminal ensures compatibility with the new generation of high definition set-top boxes.
- Home Theater Conveniences include easy installation and 32dB whisper quiet operation (using the Power Save mode).

XV-Z10000

HDTV Compatible	1080i (in Advanced Intelligent Compression), 720p, 480i/p
Aspect Ratio	4:3/16:9
Resolution	1280 x 720
Brightness	800 ANSI Lumens (in High Brightness Mode)
Contrast Ratio	2600:1 (in High Contrast Mode)
Maximum Screen Size	300" (Diagonally Measured Using 16:9 Aspect Ratio)
Projection Distance	100" Screen Throw Distance 13'2" - 17'11"
Display Method	DLP™ 0.8" HD2 from Texas Instruments
Inputs	2 Component/RGB (x5 RCA) 1 Composite Video (RCA) 1 S-Video (4-Pin DIN) 1 DVI-I/HDPCP (Component and Digital/Analog RGB) 1 Wired Remote Control (3.5mm Mini Jack) 1 RS-232C Serial Port (9-Pin D-Sub)
Anamorphic DVD Capable	Yes
3D Y/C Digital Comb Filter	Yes
Manual Optical Lens Shift	Yes, 1 Full Screen Height
Film Mode	Yes, 24 Hz Progressive Format
Computer Compatibility	SXGA, XGA, Mac® 21"/19" (in Advanced Intelligent Compression), SVGA, VGA, VESA, Mac® 16"/13"
Video System	NTSC/NTSC4.43/PAL/PAL (60Hz)/PAL-M/PAL-N/SECAM
Lens Type	1-1.35x Manual Zoom and Focus
Projection Lamp Type/Life	270W SHP/up to 2000 Hours
Fan Noise	32 dB (in Eco Mode)
Gamma Correction	Yes
2-D Digital Keystone Correction	Yes
Color Temperature Adjustment	Yes
Detachable AC Cord	Yes
Optional Ceiling Bracket	AN-CM250
Wireless Light-Up Remote Control	Yes
Optional Digital Decoder Required	Yes (for HDTV)
Built-in Audio	None
Power Source	100-240V AC, 50/60Hz (Multi-Voltage)
Power Consumption	365W (0.1W in Standby)
Dimensions (w x h x d)	18 11/16" x 7" x 16" (Main Body Only) 18 11/16" x 7" x 19 1/2" (Including Terminal Cover)
Weight	20.9 lbs.
UPC	074000358836

SHARP VISION®

Design and specifications subject to change with notice.
Limited Warranty: 1-year parts and labor.
Sharp and SharpVision are registered trademarks of Sharp Corporation.

Mac® is a trademark of Apple® Computer, Inc., registered in the U.S. and other countries.



DLP™, the DLP™ logo and the DLP™ medallion are trademarks of Texas Instruments.

SHARP®

Sharp Electronics Corporation
Consumer Electronics Group
Sharp Plaza, Mahwah, NJ 07430-2135
1-877-388-SHARP
www.sharppusa.com
©2004 Sharp Electronics Corporation
FP-02-102/08-04

SHARP VISION™



XV-Z2000 HOME THEATER PROJECTOR

This high definition DLP™ projector is a stylish, feature-packed projector ideal for the dedicated home theater or any viewing room in the home.

Utilizing the DLP™ HD2+ chip from Texas Instruments and with a resolution of 1280 x 720, the XV-Z2000 boasts a 2500:1 contrast ratio and a brightness rating of 1200 ANSI lumens, delivering one of the best pictures available in consumer home theater today.

- High Contrast Ratio 2500:1 (in High Contrast Mode) enhances the XV-Z2000's ability to discern fine, detailed differences between the darkest and lightest colors and provides superior black level reproduction.
- 1200 ANSI Lumens (in High Brightness Mode) is a high ANSI lumens rating that delivers a bright, beautiful picture.
- Native 720p High Definition Capability (compatible with 1080i and 720p HD signals).
- Display method: DLP™ 0.8" HD2+ from Texas Instruments.



- 1.5x Powered Zoom and Focus simplifies adjustments without the need for changing the mounting position.
- Powered Optical Iris System - (High Contrast Mode/High Brightness Mode) instantly changes brightness and contrast settings with the push of a button. This allows the greatest flexibility for varying home theater environments.
- DVI-I with High-bandwidth Digital Content Protection (HDCP) Terminal ensures compatibility with the new generation of high definition set-top boxes.
- Home Theater Conveniences include easy installation and 28 dB whisper quiet operation (using the Power Save mode).

XV-Z2000

HDTV Compatible	Yes, 1080i (in Intelligent Compression), 720p, 480i/p
Aspect Ratio	4:3/16:9
Resolution	1280 x 720
Brightness	1200 ANSI Lumens (in High Brightness Mode)
Contrast Ratio	2500:1 (in High Contrast Mode)
Maximum Screen Size	300" (Diagonally Measured Using 16:9 Aspect Ratio)
Projection Distance	100" Screen Throw Distance 8'5"-13'1"
Display Method	DLP™ 0.8" HD2+ from Texas Instruments
Inputs	2 Component (Y,Pb,Pr) 1 Composite Video (RCA) 1 S-Video (4-Pin DIN) 1 DVI-I/HDPCP (Component and Digital/Analog RGB) 1 RS-232C Serial Port (9-Pin D-Sub)
Anamorphic DVD Capable	Yes
Computer Compatibility	XGA, Mac® 19" (in Intelligent Compression) SVGA, VGA, VESA, Mac® 16"/13"
Video System	NTSC/NTSC4.43/PAL/PAL (60Hz)/PAL-M/PAL-N/SECAM
Lens Type	1-1.5x Power Zoom and Focus
Projection Lamp Type/Life	275W SHP/up to 3,000 Hours
Gamma Correction	Yes
2-D Digital Keystone Correction	Yes
Color Temperature Adjustment	Yes
Detachable AC Cord	Yes
Optional Ceiling Bracket	AN-CM270
Wireless Glow Remote Control	Yes
Optional Digital Decoder Required	Yes (for HDTV)
Built-in Audio	None
Power Source	100-240V AC, 50/60Hz (Multi-Voltage)
Power Consumption	360W
Dimensions (w x h x d)	12 7/32" x 3 33/64" x 11 7/64" (Main Body Only) 12 7/32" x 4 7/64" x 11 5/16" (Including Terminal Cover)
Weight	9.3 lbs.
UPC	074000364301

SHARP VISION®

Design and specifications subject to change with notice.
Limited Warranty: 1-year parts and labor.
Sharp and SharpVision are registered trademarks of Sharp Corporation.

Mac® is a trademark of Apple® Computer, Inc., registered in the U.S. and other countries.



DLP™, the DLP™ logo and the DLP™ medallion are trademarks of Texas Instruments.

SHARP®

Sharp Electronics Corporation
Consumer Electronics Group
Sharp Plaza, Mahwah, NJ 07430-2135
1-877-388-SHARP
www.sharppusa.com
©2004 Sharp Electronics Corporation
FP-02-104/08-04

SHARP VISION™



XV-Z2000 HOME THEATER PROJECTOR

This high definition DLP™ projector is a stylish, feature-packed projector ideal for the dedicated home theater or any viewing room in the home.

Utilizing the DLP™ HD2+ chip from Texas Instruments and with a resolution of 1280 x 720, the XV-Z2000 boasts a 2500:1 contrast ratio and a brightness rating of 1200 ANSI lumens, delivering one of the best pictures available in consumer home theater today.

- High Contrast Ratio 2500:1 (in High Contrast Mode) enhances the XV-Z2000's ability to discern fine, detailed differences between the darkest and lightest colors and provides superior black level reproduction.
- 1200 ANSI Lumens (in High Brightness Mode) is a high ANSI lumens rating that delivers a bright, beautiful picture.
- Native 720p High Definition Capability (compatible with 1080i and 720p HD signals).
- Display method: DLP™ 0.8" HD2+ from Texas Instruments.



- 1.5x Powered Zoom and Focus simplifies adjustments without the need for changing the mounting position.
- Powered Optical Iris System - (High Contrast Mode/High Brightness Mode) instantly changes brightness and contrast settings with the push of a button. This allows the greatest flexibility for varying home theater environments.
- DVI-I with High-bandwidth Digital Content Protection (HDCP) Terminal ensures compatibility with the new generation of high definition set-top boxes.
- Home Theater Conveniences include easy installation and whisper quiet operation.

XV-Z2000

HDTV Compatible	Yes, 1080i (in Intelligent Compression), 720p, 480i/p
Aspect Ratio	4:3/16:9
Resolution	1280 x 720
Brightness	1200 ANSI Lumens (in High Brightness Mode)
Contrast Ratio	2500:1 (in High Contrast Mode)
Maximum Screen Size	300" (Diagonally Measured Using 16:9 Aspect Ratio)
Projection Distance	100" Screen Throw Distance 8'5"-13'1"
Display Method	DLP™ 0.8" HD2+ from Texas Instruments
Inputs	2 Component (Y,Pb,Pr) 1 Composite Video (RCA) 1 S-Video (4-Pin DIN) 1 DVI-I/HDPCP (Component and Digital/Analog RGB) 1 RS-232C Serial Port (9-Pin D-Sub)
Anamorphic DVD Capable	Yes
Computer Compatibility	XGA, Mac® 19" (in Intelligent Compression) SVGA, VGA, VESA, Mac® 16"/13"
Video System	NTSC/NTSC4.43/PAL/PAL (60Hz)/PAL-M/PAL-N/SECAM
Lens Type	1-1.5x Power Zoom and Focus
Projection Lamp Type/Life	275W SHP/up to 3,000 Hours
Gamma Correction	Yes
2-D Digital Keystone Correction	Yes
Color Temperature Adjustment	Yes
Detachable AC Cord	Yes
Optional Ceiling Bracket	AN-CM270
Wireless Glow Remote Control	Yes
Optional Digital Decoder Required	Yes (for HDTV)
Built-in Audio	None
Power Source	100-240V AC, 50/60Hz (Multi-Voltage)
Power Consumption	360W (6W Standby)
Dimensions (w x h x d)	12 7/32" x 3 33/64" x 11 7/64" (Main Body Only) 12 7/32" x 4 7/64" x 11 5/16" (Including Terminal Cover)
Weight	9.3 lbs.
UPC	074000364301

SHARP VISION®

Design and specifications subject to change with notice.
Limited Warranty: 1-year parts and labor.
Sharp and SharpVision are registered trademarks of Sharp Corporation.

Mac® is a trademark of Apple® Computer, Inc., registered in the U.S. and other countries.



DLP™, the DLP™ logo and the DLP™ medallion are trademarks of Texas Instruments.

SHARP®

Sharp Electronics Corporation
Consumer Electronics Group
Sharp Plaza, Mahwah, NJ 07430-2135
1-877-388-SHARP
www.sharppusa.com
©2004 Sharp Electronics Corporation
FP-02-104/08-04