



Present Wirelessly and Professionally



- Wireless Presentation via Your Smart Device by QCast (optional)
- 4000ANSI Lumen High Brightness
- Low Noise Level 31/28dB Based on ISO 7779 Standard
- Auto Vertical & 2D Keystone



MW705 4000AL WXGA DLP Projector
MX704 4000AL XGA DLP Projector

BenQ

Because it matters

Exceptional Image Quality for High-Impact Presentations

Powerfully Bright and Whisper Quiet

It doesn't matter where you are, with 4000 ANSI lumen high brightness, the MX704/MW705 will always give you the best clarity under the brightest lights! So, take advantage! Stay in control and enjoy perfect presentations and the next interactions with your audience!

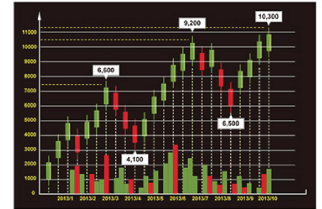


High Contrast

A high contrast ratio ensures that every text, image, graph, chart and video is projected with optimal clarity and enhanced sharpness, especially for numerical data. This is for presenters to view their presentation files clearly and the audience to stay focused on the contents projected.



High Contrast



Low Contrast

Long-Lasting DLP Image Perfection

Utilizing a nearly-sealed DLP projection engine, BenQ projectors exhibit virtually no image distortion from panel aging due to heat or dust buildup. Millions of micro mirrors on the advanced DMD chip reflect pure light through the color wheel, producing precise details and intensely saturated colors without degradation over time.



Perfect Six-Color Management via Independent 3D Calibration

Independently fine-tune the hue, gain, and saturation levels of each of the six primary colors (R/G/B/C/M/Y) with innovative BenQ 3D color management. The ability to precisely control these parameters greatly enhances mid-tones and greyscales to deliver more realistic images and video.



Setup Flexibility

Dual-Axis Tilt Adjustment

All-new MX704/MW705 includes dual height-adjustment feet to perfectly align the projector to the screen. Twice as effective as a single foot, the two adjustable feet provide a simple way to set the projector up on a tabletop and start the meeting.



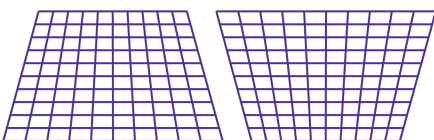
Powerfully Bright and Whisper Quiet

Conventional high-brightness projectors make a lot of noise. Not the MW705, which pumps out 4000 lumens of ultra-high brightness with only 31dB of sound, even with full power. Silent and brilliant, your presentation will command the audience's full attention with no distractions.

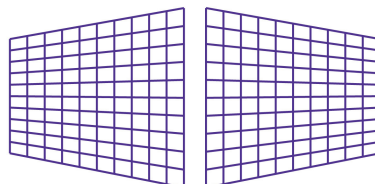


2D Keystone Correction & Corner Fit Correction

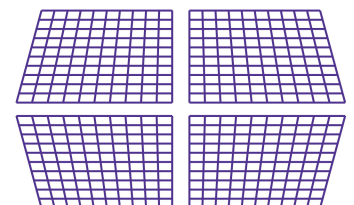
2D keystone correction enhances installation flexibility by correcting the trapezoid effect via horizontal and vertical adjustments up to +30 degrees. With it, the projector can be placed off center and the presenter can stand in front of the screen without blocking the image. The projector can also be placed anywhere on a u-shaped tabletop without moving the table or putting a stand in the center. Moreover, Corner fit is a flexible and convenient way to align the picture perfectly by adjusting each corner of an image independently.



Vertical Keystone



Horizontal Keystone



Corner Fit

Wireless Presentation via Your Smart Device by QCast

Smart Design for Natural Command

Every detail of MW705 is optimized for business. One-touch buttons for EcoBlank and QCast on both the remote and the projector make it easy to pause presentations by blanking out the screen or to quickly start wireless Full HD 1080p streaming. And a new control panel keeps all projector controls at your fingertips. The simple plug & play QCast WiFi dongle is even designed to unobtrusively plug into a hidden port, keeping the minimalist design uncluttered.



Easy Maintenance & Eco Friendly

Dust Filter Free Design

BenQ Projectors feature leading-edge Digital Light Processing (DLP) Technology, featuring nearly-sealed projection engines able to deliver persistent picture perfection without the hassles and costs of filters. The ability of DLP to keep heat and dust out of the engine results in long-lasting clarity without unnecessary filter replacement and cost.



Dust filter free

+



No dust filter to change or clean

=



Save your money!

World-Leading SmartEco™ Technology for a Greener Environment

As the first DLP brand to incorporate Philips' ImageCare technology into its projector lamp system, BenQ has taken a further leap, developing its own SmartEco™ Technology to perfect what DLP can do for energy saving in any occasion. Built with this brand new invention, the BenQ projector brings together uncompromised brightness innovative features.



Convenient Lamp Access

Top-mounted quick-release doors for lamp replacement eliminate the need to move the projector for quick, hassle-free lamp exchange. This versatility prevents the need to remove the projector from its mounting bracket in single or multiple projector installations for lamp replacement.



Eco Blank Mode

During breaks in presentations or when the projector is not in use, Eco Blank Mode reduces power consumption by up to 70% while at the same time eliminating distractions from the inactive screen. The blanked screen refocuses the audience's attention to the presenter while conserving energy.

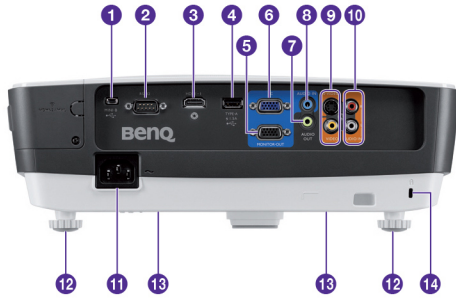


Full Power On
(100% Lamp Power)



Eco Blank Mode On
(30% Lamp Power at the Lowest)

Input and Output Terminals



- ❶ Mini USB port
- ❷ RS232 control port
- ❸ HDMI-input port
- ❹ USB Type-A port
Provides 1.5A power. Used for charging the QCast dongle (optional accessory).
- ❺ RGB signal output jack
- ❻ RGB (PC)/Component Video (YPbPr/ YCbCr) signal input jacks
- ❼ Audio output jack
- ❽ Audio input jack
- ❾ S-Video input jack
- ❿ Video input jack
- ⓫ Audio (L/R) input jacks
- ⓬ AC power jack
- ⓭ Adjuster foot
- ⓮ Ceiling mount holes
- ⓯ Kensington anti-theft lock slot

Product Specifications

Projection System	DLP	
Native Resolution	MX704: XGA (1024x768) / MW705: WXGA (1280x800)	
Brightness	4000 ANSI Lumen	
Contrast Ratio	13000:1	
Display Color	1.07 Billion Colors	
Lens	F=2.56~2.68, f=22.04~24.14mm	
Aspect Ratio	MX704: Native 4:3 (5 aspect ratio selectable) / MW705: Native 16:10 (5 aspect ratio selectable)	
Throw Ratio	MX704: 1.96~2.15 / MW705: 1.55~1.7	
Image Size (Diagonal)	60" ~ 300"	
Zoom Ratio	1.1x	
Lamp Type	240W	
Lamp Mode (Normal/Eco/SmartEco/LampSave)*	2500/4000/6000/7500(80%~30%) hours	
Keystone Adjustment	2D, Vertical & Horizontal ± 40 degrees; Auto vertical keystone ± 30 degrees	
Projection Offset	MX704: Vertical 120% $\pm 5\%$ / MW705: Vertical 100% $\pm 5\%$	
Resolution Support	VGA(640 x 480) to WUXGA_RB(1920 x 1200)*RB = Reduced blanking	
Horizontal Frequency	15K-102KHz	
Vertical Scan Rate	23-120Hz	
Compatibility	HDTV Compatibility	480i, 480p, 576i, 576p, 720p, 1080i, 1080p
	Video Compatibility	NTSC, PAL, SECAM
	3D Compatibility	Frame Sequential: Up to 60Hz 720p
	(Please refer to User Manual for detailed support timing.)	Frame Packing: Up to 24 Hz 1080p
		Side by Side: Up to 24Hz 1080p
		Top Bottom: Up to 60Hz 1080p
Interface	Computer in (D-sub 15pin)	x 1 (integrate with component)
	HDMI	x 2 (HDMI with MHL2.0 x1, HDMI x 1)
	MHL	x 1 (HDMI with MHL2.0)
	Monitor out	x 1
	Composite Video in (RCA)	x 1
	S-Video in	x 1
	Audio in (Mini Jack)	x 1
	Audio in (L/R)	x 1
	Audio out (Mini Jack)	x 1
	Speaker	2W x 1
	USB (Type A)	x 1 (1.5A power supply)
	RS232 (DB-9pin)	x 1
	IR Receiver	x 2 (Front+Top)
Dimensions	Dimensions(W x H x D)	300 x 88 x 240 mm (include feet)
	Weight	2.8 Kg
Power	Power Supply	AC100 to 240V.A, 50 to 60 Hz
	Power Consumption	Standby <0.5W
	Power Management Function	Automatic power off after 20 minutes without a display source
Audible Noise	31/28 dBA (Normal/Economic mode) - Based on ISO 7779 standard	
On-Screen Display Languages	Arabic/Bulgarian/ Croatian/ Czech/ Danish/ Dutch/ English/ Finnish/ French/ German/ Greek/ Hindi/ Hungarian/ Italian/ Indonesian/ Japanese/ Korean/ Norwegian/ Polish/ Portuguese/ Romanian/ Russian/ Simplified Chinese/Spanish/ Swedish/Turkish/ Thai/ Traditional Chinese (28 Languages)	
Picture Modes	**Dynamic / Presentation / sRGB / Cinema / (3D) / User 1 / User 2	

*Lamp life results will vary depending on environmental conditions and usage. Actual product's features and specifications are subject to change without notice.

** Default mode is **Presentation**. When 3D is on, Picture Modes only shows 3D. When 3D is off, it is not shown in Picture Modes.



BenQ Europe B.V.
Meerenakkerweg 1-17
5652 AR Eindhoven
The Netherlands
Tel: +31 88 8889200
Fax: +31 88 8889299

© 2015 BenQ Corp. Specification may vary by region, please visit your local stores for details. Actual product's features and specifications are subject to change without notice. This material may include corporate names and trademarks of third parties which are the properties of the third parties respectively. Doc.: PRJ HB BR EN 0301



Because it matters