

HIGH BRIGHTNESS PROJECTORS
EB-4650/4550/4750W
EB-4850WU/4950WU

EPSON
 EXCEED YOUR VISION



BRIGHT, CLEAR AND HASSLE-FREE PRESENTATIONS, SLIDE AFTER SLIDE.

The Epson's high brightness business projector series combines dynamic image quality and exceptional versatility to make every presentation shine. Deliver dynamic presentations with outstanding detail in high resolution for superbly enhanced image clarity. Enlighten your audience with clear presentations, even in the brightest venues. Epson's optimised Cooling System and extended lamp life delivers long-lasting performance, which means you can project dazzling presentations time after time.



EB-4650/EB-4550



EB-4750W/EB-4850WU/EB-4950WU



High Brightness



Point Correction



Split Screen



10W Speaker



iProjection

ENGINEERED FOR BUSINESS

Exceptional Image Quality

Dazzling colour, contrast and sharpness bring every presentation to life in vivid detail.

Versatility in Projection

More presentation options with flexible split-screen projection.

Durable By Design

Lasting performance with Epson's cooling technology and up to 5,000-hour lamp life.



Epson's EB-4000 series delivers brilliant presentations with incredible image quality and reliability. With up to 1920 x 1200 resolution, a 5000:1 contrast ratio and up to 5,200 lumens of light output, Epson ensures a dynamic viewing experience.



Exceptional Image Quality

Incredible WUXGA 1920 x 1200 Resolution*

Deliver dynamic viewing experience with superb high resolution image display without distortion in Full HD video, Blu-ray and other graphic-intensive media. The projection images remain razor sharp and vivid, even on larger screens.

* Available on EB-4850WU and EB-4950WU only.

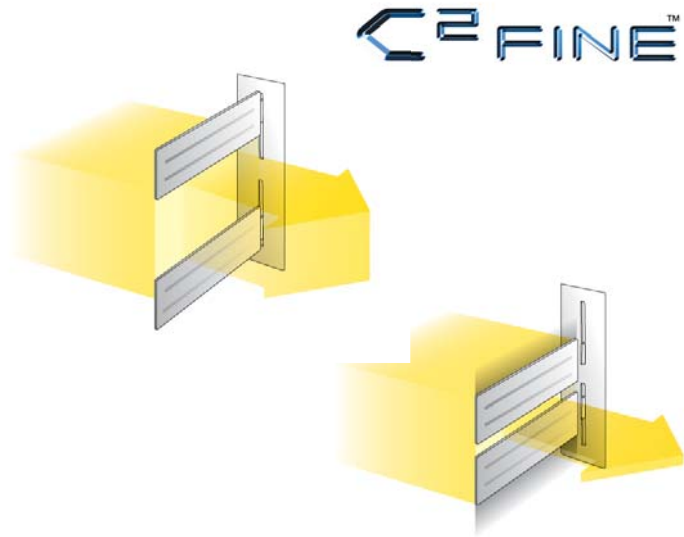
Brighter, More Colourful Images

The Epson EB-4000 series gives out up to 5,200 lumens of light output for clearer, brighter presentations. And with Epson's special optical engine system, there's no compromise on colour intensity even with the added brightness. Epson's colour management capability – means vibrant colour in any environment.



Vivid Contrast Brings Images to Life

Differences in brightness from image to image can result in loss of detail. Epson's Auto Iris feature changes that by delivering an incredible 5,000:1 contrast ratio, automatically adjusting images for optimal clarity. In combination with C²Fine™, the EB-4000 series offers uniform and vivid images with exceptional contrast for a smooth presentation.



Low contrast image



High contrast image

Faroudja DCDi Cinema

Faroudja DCDi® (Directional Correlational Deinterlacing) Cinema video enhancement technology produces exceptional true-to-life images. Designed to eliminate jaggedness, this unique technology, which combines deinterlacing, noise reduction and sharpness enhancement technologies, won an Emmy Award from the National Academy of Television Arts and Sciences in the USA in 2001.



Without DCDi



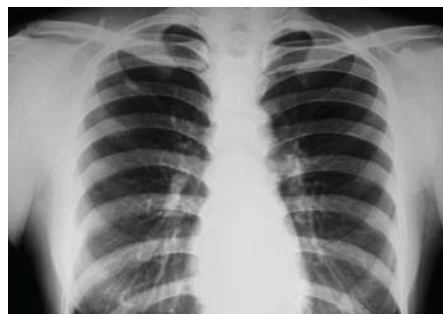
With DCDi

DICOM SIM Mode

This colour mode produces images with clear shadows, ideal for projecting X-rays and other medical images*.



Normal colour mode



DICOM SIM mode

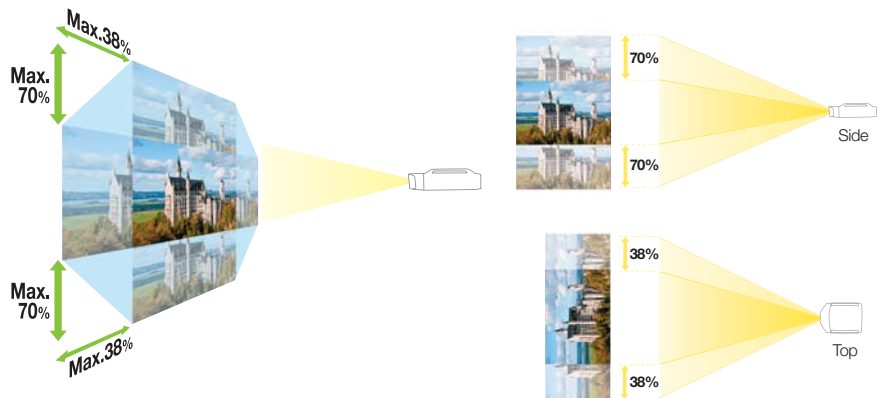
* This projector series is not a medical device and cannot be used for actual medical diagnosis.

Versatility in Projection

Wide Lens Shift*

Enjoy the ease and versatility of projector and screen placement with Epson's extended maximum vertical lens shift of 70% and maximum horizontal lens shift of 38%.

* Lens shift varies in different models and not applicable for rear projection lenses.



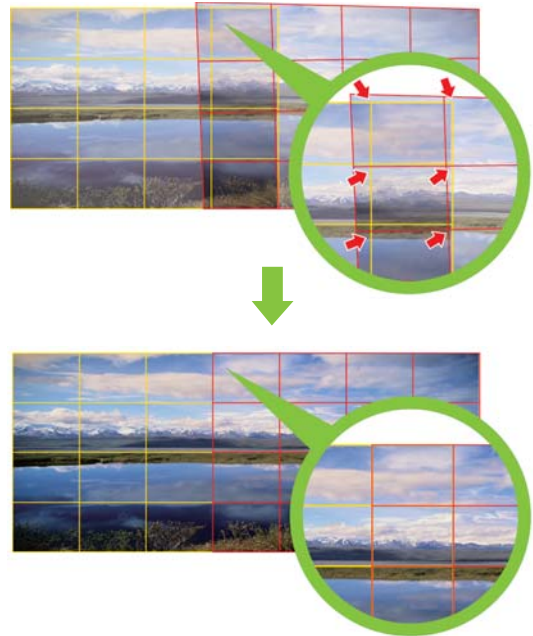
Greater Stability with Lens Shift Lock

By sliding the tab above the lens to "lock", the internal gears that move the lens will be kept firmly in place. This prevents the lens from tilting during projection, especially when the projector is installed on a tilt.



Point Correction

Now you can correct single-projector distortion or multiple-projector misalignment directly on the screen. Quickly fine-tune the images by adjusting point by point from right to left, top to bottom, using a projected maximum 9 x 9 matrix.



Split Screen

Display images from two different sources side by side on the same screen for a more effective presentation. In video conferences, for example, images of presentation materials and remote participants can be shown simultaneously.



Stackable for a Brighter Passive 3D Projection*

Create high-brightness 3D images on screen using optional 3D hardware by stacking two of the same models in the Epson EB-4000 series.



*Available on EB-4850WU and EB-4950WU only.

Durable by Design

Maintenance Has Never Been Easier

A clever ergonomic design means you can change lamps and filters easily without having to uninstall the projector from the ceiling.



Easy-to-replace Lamp

The lamp can be replaced quickly without tools and having to uninstall from the ceiling.



Easy-to-replace Filter

The ventilation for drawing cooling air is equipped with a large high density pleated type filter to absorb airborne dust and prevent it from entering the projector, which can be removed by the side cover when there is a need to change the filter.

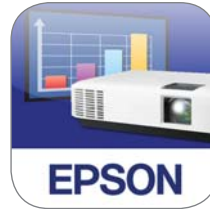
Longer Projector Lifespan

By combining Epson's proprietary C²Fine™ (Crystal Clear Fine) Technology, inorganic LCD panels and Epson's optimised Cooling System, Epson EB-4000 series projectors can withstand temperatures up to 45°C while preserving brightness and picture quality. Additionally, projector lamps now last up to 5,000 hours when running in Eco Mode.

Experience Convenient, PC-Free Presentations

Epson iProjection

With the iProjection application for both iOS and Android, wireless projection from a smart device is made possible.* This feature supports various files and allows you to present your smartphone contents with ease. It also lets you use other touch-screen operations, such as flicking to turn pages and pinching to zoom in or out.



* In iProjection, projector profile search, multi-screen display, distribution function, audio transfer, movie file transfer, interrupt connection disabling and encryption data transfer capabilities are not supported.



Eco Features

- Uses just 0.39W of power in standby mode
- Projector optics employ lead-free lenses
- Unpainted plastic housing reduces the environment impact
- The flame retardants used in the plastic housing do not contain chlorine or bromine

Better Products for a Better Future™

For more information on Epson's environmental programmes, visit <http://global.epson.com/SR/environment>

PARTNERS IN PERFECTION

Desktop Document Camera ELPDC20



3kg / 6.6lbs
2 megapixels with 30fps
12 x optical zoom
1080p output resolution
HDMI digital connectivity

Desktop Document Camera ELPDC11



2.2kg / 4.85lbs
5 megapixels with 30fps
10 x digital zoom
Bundled with microscope adaptor

Interactive Unit ELPIU01



USB powered
Easy interactive function
Simple and easy set-up

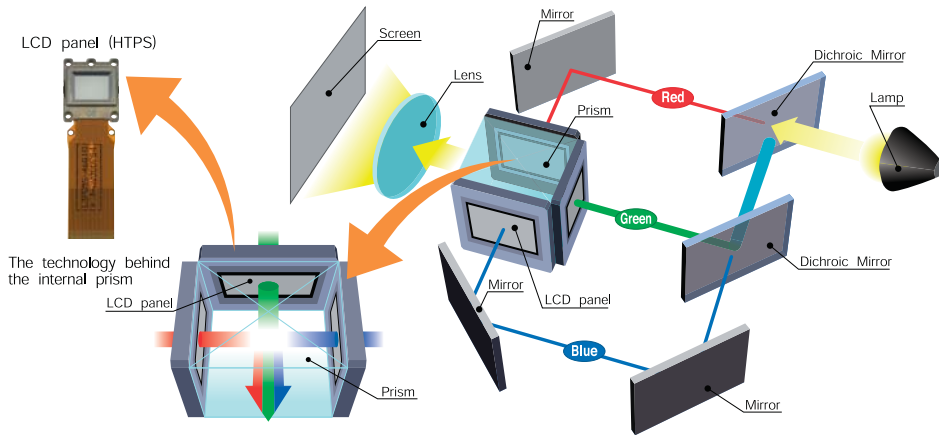
EPSON 3LCD TECHNOLOGY – FOR BRIGHT, FAITHFUL COLOURS

3LCD projectors offer brighter and more accurate colours as they produce different shades and hues by filtering, then mixing beams of the three primary colours (red, green and blue).

In a 3LCD projector, white light is first split into the three beams of primary colours. Each beam is then filtered through its own LCD that will give each individual pixel of the image its exact brightness for each colour. The colour beams are then perfectly recombined in a prism before being projected out as a complete image.

This compares to projectors using single-chip technology that actually project individual colours sequentially by filtering their single white light beam through a colour wheel, and then relying on human colour perception to combine the colours in the viewers' minds.

As a result, 3LCD projectors also offer greater detail, smoother gradations, no "colour breakup" effect, are easier on viewers' eyes, and consume about 25% less power to achieve the same brightness compared to a single-chip projector using a lamp of the same wattage.



3LCD projector : RGB are projected at the same time, which makes the single composite image easy on the eyes.

- An independent test by projector review media ProjectorCentral.com in 2009 of about 800 projectors found that on average, 3LCD projectors use 25% less power than single-chip projectors.

www.3lcd.com

COLOUR LIGHT OUTPUT – TRUE COLOURS SHINING THROUGH

The Brightness Myth

Did you know that the brightness specification (in lumens) for projectors is only a measurement of its white light output?

In fact, many manufacturers artificially boost their projectors' brightness rating by increasing their white light production capability at the expense of colour brightness.

CLO to Enlighten

To help buyers make better-educated decisions, colour scientists at the U.S. government's National Institute of Standards and Technology (NIST – www.nist.gov) have developed Colour Light Output (CLO) as a specification to provide critical information on a projector's ability to deliver colour.

Colour Light Output is critically important because it measures the brightness of Red, Green and Blue. In a 3LCD projector, these primary colours create white when combined in the right proportions. Beautifully balanced colour is possible when Red, Green and Blue combine to produce the exact colours required. Colour Light Output provides users with an additional way to evaluate a projector and make more discerning buying decisions.

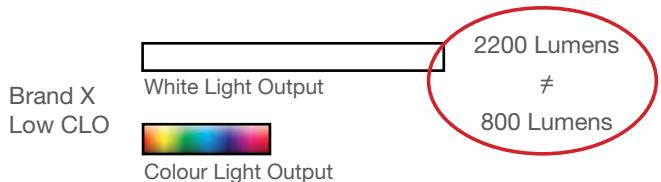
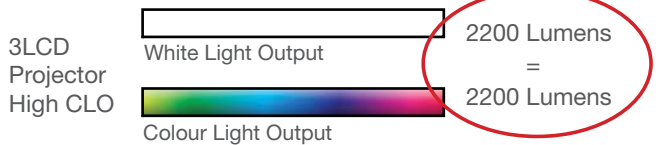
How is Colour Light Output measured?

X	X	X
X	X	X
X	X	X

Brightness (or White Light Output) measures the total amount of white light projected in lumens on a nine point grid. It does not measure colour.



Colour Light Output uses 3 sets of a nine-point grid to measure the primary colours - red, green and blue, using the same approach used to measure White Light Output in lumens.



www.colorlightoutput.com

MODEL NUMBER	EB-4650	EB-4550	EB-4750W
Projection Technology	RGB liquid crystal shutter projection system (3LCD)		
Specifications of Main Parts			
LCD	Size	0.63" wide panel with MLA	0.59" wide panel with MLA
	Native Resolution	XGA (1024 x 768)	WXGA (1280 x 800)
Projection Lens			
Type	Optical Zoom (Manual) / Focus (Manual)		
F-Number	1.50 - 2.15		
Focal Length	16.72 - 33.47 mm		
Zoom Ratio	1 - 2.0		
Throw Ratio	1.27 - 2.59 (Wide - Tele)		
Lens Shift	Mode	Manual (with Lens Shift Lock)	
	Vertical (Up/Down)	-58% to +58% (H Center) (Manual)	-70% to +70% (H Center) (Manual)
	Horizontal (Left/Right)	-38% to +38% (V Center) (Manual)	
Lamp	Type	280W UHE	280W UHE
	Life (Normal / Eco) ¹	4,000 hours / 5,000 hours	280W UHE
Screen Size (Projected Distance)			
Zoom: Wide	30" - 300" [0.74 - 7.84 m]		30" - 300" [0.79 - 8.32 m]
Zoom: Tele	30" - 300" [1.55 - 15.90 m]		30" - 300" [1.65 - 16.85 m]
Standard size	100" screen 2.58 - 5.27 m		100" screen 2.74 - 5.59 m
Brightness²			
White Light Output (Normal / Eco)	5,200lm / 3,700lm	4,500lm / 3,700lm	4,200lm / 3,000lm
Colour Light Output	5,200lm	4,500lm	4,200lm
Contrast Ratio			
5,000:1			
Internal Speaker(s)			
Sound Output	10W Monaural		
Keystone Correction			
Vertical / Horizontal	±30° / ±30° (Zoom: Tele) (with Standard Lens)		
Connectivity			
Analog Input	D-Sub 15pin	1 (Blue)	
	5BNC	1	
	Component	5BNC, D-Sub 15pin x 1 (Blue) (common with Analog RGB connector)	
	Composite	RCA x 1 (Yellow)	
	S-Video	1 Mini DIN	
Digital Input	HDMI	1 (HDCP Supported)	
	Display Port	1	
Output Terminal	D-Sub 15pin	1 (Black)	
Audio Input	RCA (White/Red)	1 Pair	
	Stereo Mini-jack	3	
Audio Output	Stereo Mini-jack	1	
Others	USB Type B	1 (For Service Only)	
Control I/O	RS-232C	D-Sub 9pin x 1	
	Remote Control Input	Stereo Mini-jack x 1	
Network	Wired Lan	RJ45 x 1 (10/100 Mbps)	
	Wireless	Optional (ELPAP07)	
Wireless Specifications			
Supported Speed For Each Mode	IEEE 802.11b: 11 Mbps ³ , IEEE 802.11g: 54 Mbps ³ , IEEE 802.11n: 130 Mbps ³		
Wireless Lan Security	WEP, WPA-PSK(TKIP/AES), WPA2-PSK(TKIP/AES)		
Operating Temperature			
Under 1,500m / 4,921ft 0 - 45 °C <32 - 113°F> (20% - 80% humidity, unfrozen)			
Operating Altitude			
0 - 3,048 m <0 - 10,000 ft> (over 1,500m / 4,921ft: with high altitude mode)			
Direct Power On / Off			
Yes			
Start-Up Period			
About 10 seconds, Warm-up Period: 30 seconds			
Cool Down Period			
Instant Off or 0 second			
Air Filter	Type	High Efficiency Filter	
	Maintenance Cycle	10,000 hours ⁴	
Power Supply Voltage			
100 - 240 V AC ±10%, 50/60 Hz			
Power Consumption (220 - 240V)			
Lamp On (Normal / Eco)	388W / 298W	368W / 298W	388W / 298W
Standby (Network On / Off)	4.6W / 0.39W		
Dimension Excluding Feet (D X W X H)			
320 x 472 x 134 mm (not including Foot and Projection Lens)			
Weight			
6.5kg			
Fan Noise (Normal / Eco)			
38dB / 30dB			

Supplied Accessories

- Power Cable: 3m, 3 Wire (White)
- Computer Cable (VGA Cable): 1.8m
- Remote Control: Yes, with Alkaline AA Battery x 2
- Bundled Software: Epson Projection Software CDROM
- Cable Clamp/Lock: 1 (For HDMI Cable)
- Cable Cover: Yes
- User's Manual Set: CD-ROM

Optional Accessories

- Spare Lamp: ELPLP77
- Air Filter: ELPAF45
- Wireless LAN Card: ELPAP07
- Quick Wireless Connection USB Key: ELPAP09
- Remote Control Cable Set: ELPKC28
- Ceiling Mount: ELPMB22

EB-4650 / 4550 / 4750W



*1 Lamp life will vary depending upon mode selected, environmental conditions and usage. Lamp brightness decreases over time.

*2 Colour brightness (colour light output) and white brightness (white light output) will vary depending on usage conditions. Colour light output measured in accordance with IDMS 15:4; white light output measured in accordance with ISO 21118.

*3 Maximum speed and range is achievable when used with same enhanced mode technology. Actual data rates, features and performance may vary depending on your computer system, the environment and other factors.

*4 When used in the general office environment (the amount of floating dust: 0.04 - 0.2 mg/m³). Based on the Epson's in-house test results. 25°C (77°F)

©2013 Epson Singapore Pte Ltd. All Rights Reserved. Reproduction in part or in whole, without the written permission from Epson, is strictly prohibited.

EPSON and EXCEED YOUR VISION are registered trademarks of Seiko Epson Corporation.

All other product names and other company names used herein are for identification purposes only and are the trademarks or registered trademarks of their respective owners.

Epson disclaims any and all rights in those marks. Projected images shown herein are simulations. The actual product design and contents may vary. Specifications are subject to change without notice and may vary between countries. Please check with local Epson offices for more information.

MODEL NUMBER	EB-4850WU	EB-4950WU
Projection Technology	RGB liquid crystal shutter projection system (3LCD)	
Specifications of Main Parts		
LCD	Size: 0.76" wide panel with MLA	
	Native Resolution: WUXGA (1920 x 1200)	
Projection Lens		
Type	Optical Zoom (Manual) / Focus (Manual)	
F-Number	1.65 - 2.55	
Focal Length	21.28 - 37.94 mm	
Zoom Ratio	1 - 1.8	
Throw Ratio	1.26 - 2.30 (Wide - Tele)	
Lens Shift	Mode: Manual (with Lens Shift Lock)	
	Vertical (Up/Down)	-50% to +50% (H Center) (Manual)
	Horizontal (Left/Right)	-10% to +10% (V Center) (Manual)
Lamp	Type	260W UHE 280W UHE
	Life (Normal / Eco) ¹	4,000 hours / 5,000 hours
Screen Size (Projected Distance)		
Zoom: Wide	50" - 300" [1.35 - 8.36 m]	
Zoom: Tele	50" - 300" [2.47 - 15.01 m]	
Standard size	100" screen 2.75 - 4.98 m	
Brightness²		
White Light Output (Normal / Eco)	4,000lm / 3,200lm	4,500lm / 3,200lm
Colour Light Output	4,000lm	4,500lm
Contrast Ratio		
5,000:1		
Internal Speaker(s)		
Sound Output	10W Monaural	
Keystone Correction		
Vertical / Horizontal	±30° / ±30° (Zoom: Tele) (with Standard Lens)	
Connectivity		
Analog Input	D-Sub 15pin	1 (Blue)
	5BNC	1
	Component	5BNC, D-Sub 15pin x 1 (Blue) (Common with Analog RGB connector)
	Composite	RCA x 1 (Yellow)
	S-Video	1 Mini DIN
Digital Input	HDMI	1 (HDCP Supported)
	Display Port	1
Output Terminal	D-Sub 15pin	1 (Black)
Audio Input	RCA (White/Red)	1 Pair
	Stereo Mini-jack	3
Audio Output	Stereo Mini-jack	1
Others	USB Type B	1 (For Service Only)
Control I/O	RS-232C	D-Sub 9pin x 1
	Remote Control Input	Stereo Mini-jack x 1
Network	Wired Lan	RJ45 x 1 (10/100 Mbps)
	Wireless	Optional (ELPAP07)
Wireless Specifications		
Supported Speed For Each Mode	IEEE 802.11b: 11 Mbps ³ , IEEE 802.11g: 54 Mbps ³ , IEEE 802.11n: 130 Mbps ³	
Wireless Lan Security	WEP, WPA-PSK(TKIP/AES), WPA2-PSK(TKIP/AES)	
Operating Temperature		
Under 1,500m / 4,921ft		
0 - 45 °C <32 - 113°F> (20% - 80% humidity, unfrozen)		
Operating Altitude		
0 - 3,048 m <0 - 10,000 ft> (over 1,500m / 4,921ft: with high altitude mode)		
Direct Power On / Off		
Yes		
Start-Up Period		
About 10 seconds, Warm-up Period: 30 seconds		
Cool Down Period		
Instant Off or 0 second		
Air Filter	Type	High Efficiency Filter
	Maintenance Cycle	10,000 hours ⁴
Power Supply Voltage		
100 - 240 V AC ±10%, 50/60 Hz		
Power Consumption (220 - 240V)		
Lamp On (Normal / Eco)	368W / 298W	388W / 298W
Standby (Network On / Off)	4.6W / 0.47W	
Dimension Excluding Feet (D X W X H)		
320 x 472 x 134 mm (not including Foot and Projection Lens)		
Weight		
6.6kg		
Fan Noise (Normal / Eco)		
38dB / 30dB		

Supplied Accessories

- Power Cable: 3m, 3 Wire (White)
- Computer Cable (VGA Cable): 1.8m
- Remote Control: Yes, with Alkaline AA Battery x 2
- Bundled Software: Epson Projection Software CDROM
- Cable Clamp/Lock: 1 (For HDMI Cable)
- Cable Cover: Yes
- User's Manual Set: CD-ROM

Optional Accessories

- Spare Lamp: ELPLP77
- Air Filter: ELPAF45
- Wireless LAN Card: ELPAP07
- Quick Wireless Connection USB Key: ELPAP09
- Remote Control Cable Set: ELPKC28
- 3D Polariser: ELPPL01
- Passive 3D Glasses (Adult): ELPGS02A (Pack of 5)
- Passive 3D Glasses (Child): ELPGS02B (Pack of 5)
- Ceiling Mount: ELPMB22

EB-4850WU / 4950WU



*1 Lamp life will vary depending upon mode selected, environmental conditions and usage. Lamp brightness decreases over time.

*2 Colour brightness (colour light output) and white brightness (white light output) will vary depending on usage conditions. Colour light output measured in accordance with IDMS 15:4; white light output measured in accordance with ISO 21118.

*3 Maximum speed and range is achievable when used with same enhanced mode technology. Actual data rates, features and performance may vary depending on your computer system, the environment and other factors.

*4 When used in the general office environment (the amount of floating dust: 0.04 - 0.2 mg/m³). Based on the Epson's in-house test results. 25°C (77°F)

©2013 Epson Singapore Pte Ltd. All Rights Reserved. Reproduction in part or in whole, without the written permission from Epson, is strictly prohibited.

EPSON and EXCEED YOUR VISION are registered trademarks of Seiko Epson Corporation.

All other product names and other company names used herein are for identification purposes only and are the trademarks or registered trademarks of their respective owners.

Epson disclaims any and all rights in those marks. Projected images shown herein are simulations. The actual product design and contents may vary. Specifications are subject to change without notice and may vary between countries. Please check with local Epson offices for more information.