

# SONY



## VPL-D100 Series

Data Projectors

VPL-DW127  
VPL-DX147  
VPL-DX127  
VPL-DX102

VPL-DW122  
VPL-DX142  
VPL-DX122



BrightEra™ **HDMI**



## Stylish desktop projector for office and classroom, offering basic high performance and superior ease of use

The features of the VPL-D100 Series are well suited to a wide range of business and education applications, all available at a reasonable price. This user-friendly projector has a noiseless and simple design, and is highly portable and easy to setup – exactly what's required for a quick set up in your meeting room, client boardroom, lecture hall, or classroom.

With an auto power-saving function and long-lasting lamp replacement time of 10,000 hours, the VPL-D100 Series realizes good energy efficiency along with a good TCO. Sony's reliable BrightEra 3LCD panel offers bright and colorful projection. There's also the convenience of HDMI connectivity and an easy-to-use tablet and smartphone application. Delivering an ideal combination of basic high performance and superior ease of use, this reliable projector is sure to help you deliver engaging and attention-grabbing presentations.

# FEATURES

## Compact, Lightweight, and Stylish Design

The VPL-D100 Series has a compact and lightweight body with a small footprint of approximately 315 x 75 x 230.5 mm (12 13/32 x 2 15/16 x 9 1/16 inches). It is also light-weight depending on the model, each unit weighs approximately 2.5 kg (5.5 lb)\*<sup>1</sup> or 2.6 kg (5.8lb)\*<sup>2</sup>. This design ensures it is easy and convenient to carry into meetings and classrooms.

\*1 VPL-DW122/DX142/DX122/DX102

\*2 VPL-DW127/DX147/DX127



## Good TCO, Energy-efficient Design

### Energy Efficient With Long-Lasting Lamp Replacement Time (10,000 hours)

The lamp driver optimally controls the wattage of the lamp and achieves a long-lasting lamp replacement time of 10,000 hours with lamp brightness set to low. This extends the lamp replacement time by more than 43% compared with the previous model.



Lamp mode: low  
Complies with IEC61947 standard

\*Usage condition example : 8 hours per day x 5 times per week x 5 years  
\*\*The figures are the expected maintenance time and not guaranteed. They will depend on the environment or how the projector is used

## Auto Power Saving Function

### • Auto Mode (Auto Brightness Adjustment Function)

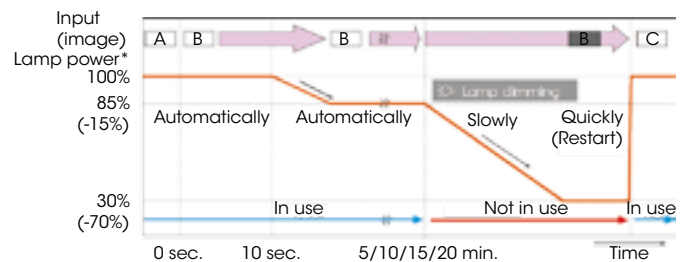
The brightness of the lamp's output is automatically adjusted depending on the brightness of the projected image, to avoid unnecessary power consumption.

When showing darker images that don't require high brightness, lamp output decreases.



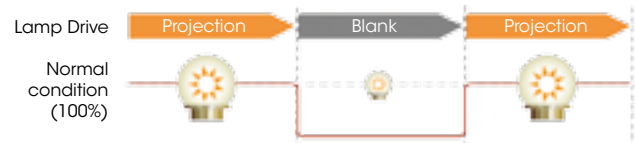
### • Lamp Dimming Function

The VPL-D100 Series projectors are equipped with a lamp dimming function. After 10 seconds of a static signal feed, the lamp dims by approximate 15% which is hardly noticeable. If one of these projectors is left powered on while not in use, after a set period of time it will automatically detect no change of signal input and will dim the lamp to as low as approximate 30% of original brightness to significantly reduce energy consumption.



### • Blank

The VPL-D100 Series projectors can temporarily disable video signal output. This function can be easily operated with just the touch of a button on the supplied Remote Commander unit. In addition, this function allows blank image projection with low power consumption using lamp control technology.



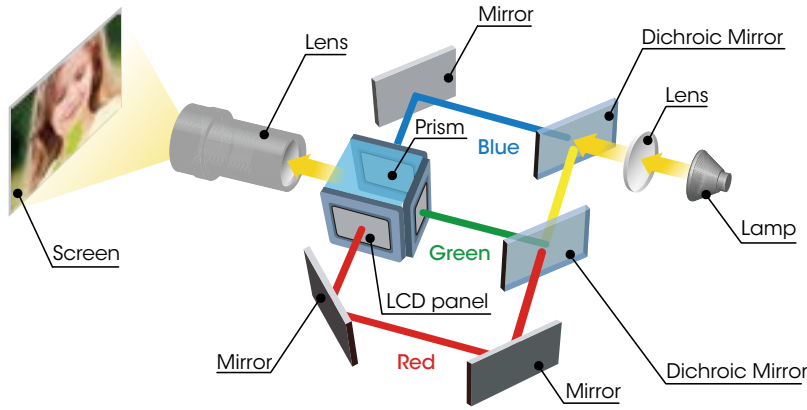
## ECO MODE Key

With a single push of the ECO MODE key on either the projector or the supplied Remote Commander™ unit, users can select an energy-saving setting from the ECO Mode menu.

# High Image Quality

## 3LCD BrightEra™ Natural and Vivid Color Images

Thanks to the optical system constantly projecting three basic colors, the projector offers excellent light efficiency and this, ensures colorful and bright images. Sony's BrightEra™ panels deliver improved panel light resistance, higher resolution, high brightness, and increased panel reliability. High color reproducibility is important especially when using colorful content, such as materials typically used in classrooms.



**3LCD Projection System**

## Various Picture Modes for Optimal Picture Quality

The projector has six available picture modes for correct picture quality: Dynamic, Standard, Presentation, Blackboard, Game, and Cinema. With six picture modes and three brightness modes combined, the user can select the most suitable picture / brightness combination according to the picture source and environment, to create the optimal image.

### Dynamic



Optimized for presenting in a bright environment, with bright and colorful text, graphics, and images.

### Standard



The picture is ideal to deliver a presentation under fluorescent lights in offices and class-rooms.

### Presentation



This setting delivers the greatest light output, ideal in a bright environment, both inside and outside.

### Blackboard



Optimized to deliver clear images on a blackboard in the classroom, supporting teaching where there is no projection screen.

### Game

Ideal to enjoy games in a living room with lots of ambient light.

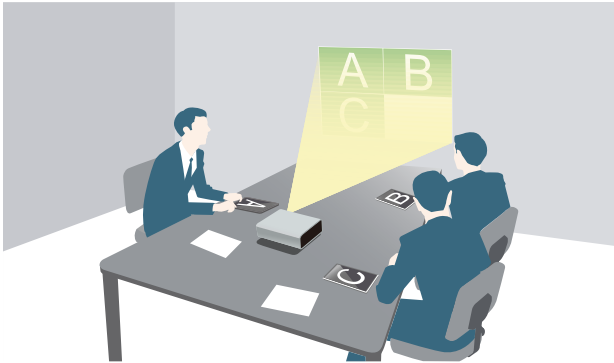
### Cinema

Fine tuned to enjoy movies in a room with indirect lights

# Ease of Use

## Network Presentation\*1 (LAN)

When the projector is installed in a LAN, presentations can be projected from any PC and Mac on the network. A tablet or smart phone can be connected at the same time. You can project jpg, pdf, and other supported formats. Up to four users can project PC / Mac images simultaneously, while up to eight\*2 users can connect to one projector.



## Wireless Presentation Software

For MS Windows / Mac OS: Projector Station for Network Presentation

For iOS / Android OS: VueMagic\*3

\*1 VPL-DW127/DX147/DX127

\*2 Up to seven users for wireless.

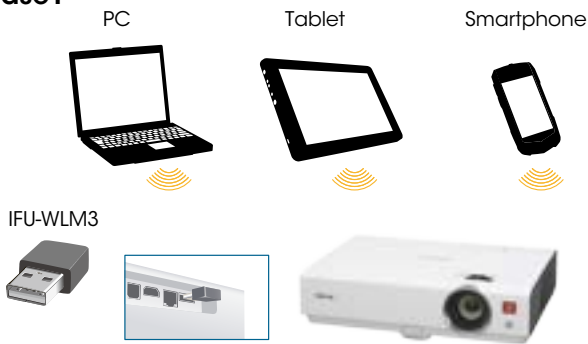
\*3 The application for tablets and smartphones is provided by Pixelworks.

For details, please visit the following website:  
<http://PWPresenter.pixelworks.com>



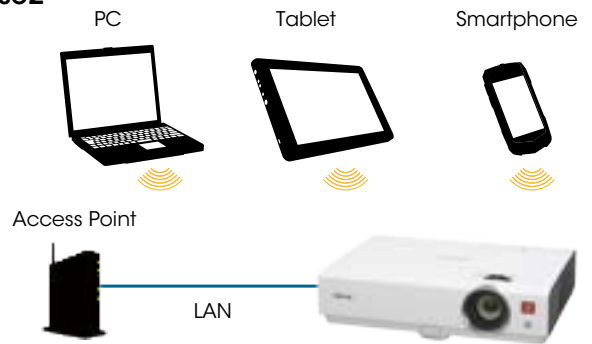
VueMagic

### Case1



USB wireless LAN module, IFU-WLM3 is included.

### Case2



## Remote Control for iPhone/iPad\*1

Projector Remote\*2 is a simple remote control application for Sony's projectors. Networked projectors can be controlled by this remote application, and remote control allows you to operate the projector using simple and easy-to-read buttons.

\*1 VPL-DW127/DX147/DX127

\*2 Projector Remote Application  
 Scan the QR code. Download FREE today.



Projector Remote



## Input Label\*1

Input label which appear in the input menu on screen can be customized. This gives users a clear understanding of which equipment is connected.

\*1 VPL-DW127/DX147/DX127



## Other Features

### Closed Captioning

Official teletext broadcasting, developed by the NCI, USA

### Network and Control\*1

Controls and monitors projector status  
 Compatible with various control systems

\*1 VPL-DW127/DX147/DX127

## USB Display\*1

The projector allows you to display pictures and audio\*2 with one USB cable. You do not need to install any driver for this function. This is a convenient and very easy way to connect to the projector.

\*1 VPL-DW127/DX147/DX127

\*2 There is a time lag in video and audio. Beyond basic usage, Line-in or HDMI-in is recommended.



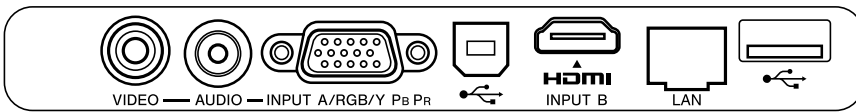
# OPTIONAL ACCESSORIES



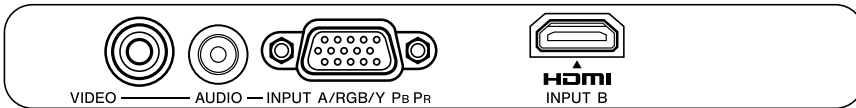
**LMP-D213**  
Projector Lamp (for replacement)

# CONNECTOR PANELS

VPL-DW127 / VPL-DX147 / VPL-DX127



VPL-DW122 / VPL-DX142 / VPL-DX122 / VPL-DX102

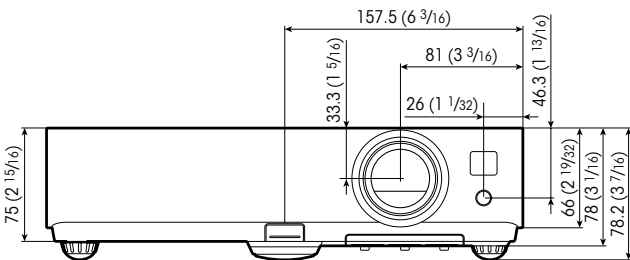


# DIMENSIONS

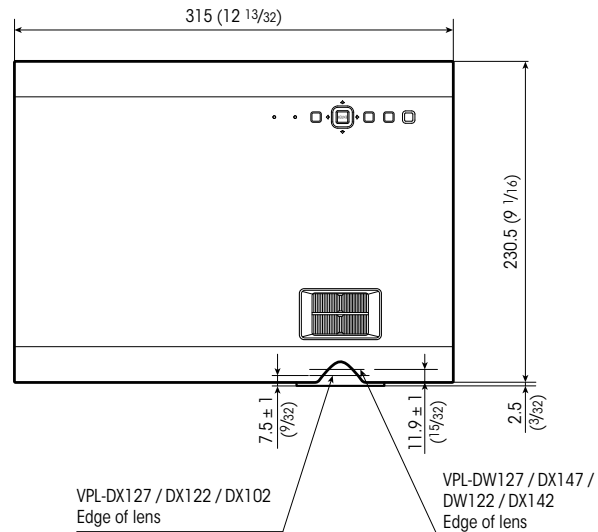
Unit: mm (inches)

VPL-DW127 / VPL-DX147 / VPL-DX127  
VPL-DW122 / VPL-DX142 / VPL-DX122 / VPL-DX102

Front



Top



# SPECIFICATIONS

		VPL-DW127	VPL-DX147	VPL-DX127
Display system		3 LCD system		
Display device	Size of effective display area	0.59" (15 mm) x 3 BrightEra Aspect ratio: 16:10	0.63" (16 mm) x 3 BrightEra Aspect ratio: 4:3	
	Number of pixels	3,072,000 (1280 x 800 x 3) pixels	2,359,296 (1024 x 768 x 3) pixels	
Projection lens	Zoom	Optical: Manual (Approx. x 1.3)		Optical: Manual (Approx. x 1.2)
	Focus	Manual		
	Throw ratio	1.36:1 to 1.77:1	1.37:1 to 1.80:1	1.47:1 to 1.77:1
Light source		Ultra high pressure mercury lamp 210 W type		
Recommended lamp replacement time*1		3000 H / 5000 H / 10000 H (Lamp mode: High / Standard / Low)		
Filter cleaning cycle*1		Max. 1000 H		
Screen size		30" to 300" (0.76 m to 7.62 m)		
Light output (Lamp mode: High / Standard / Low)		2600 lm / 1900 lm*2 / 1500 lm*2	3200 lm / 2300 lm*2 / 1900 lm*2	2600 lm / 1900 lm*2 / 1700 lm*2
Color light output (Lamp mode: High / Standard / Low)		2600 lm / 1900 lm*2 / 1500 lm*2	3200 lm / 2300 lm*2 / 1900 lm*2	2600 lm / 1900 lm*2 / 1700 lm*2
Contrast ratio (full white / full black)*3		3000:1		
Displayable scanning frequency	Horizontal	19 kHz to 92 kHz		
	Vertical	48 Hz to 92 Hz		
Display resolution	Computer signal input	Maximum display resolution: UXGA 1600 x 1200 dots*4 Panel display resolution: 1280 x 800 dots		
	Video signal input	Panel display resolution: 1024 x 768 dots NTSC, PAL, SECAM, 480/60i, 576/50i, 480/60p, 576/50p, 720/60p, 720/50p, 1080/60i, 1080/50i, 1080/60p, The following items are available for digital signal (HDMI input) only. 1080/60P, 1080/50p		
Color system		NTSC3.58, PAL, SECAM, NTSC4.43, PAL-M, PAL-N		
Keystone correction		Max. Vertical: +/- 30 degrees		
OSD language		24-languages (English, Dutch, French, Italian, German, Spanish, Portuguese, Turkish, Polish, Russian, Swedish, Norwegian, Japanese, Simplified Chinese, Traditional Chinese, Korean, Thai, Vietnamese, Arabic, Farsi, Finnish, Indonesian, Hungarian, Greek)		
Computer and video signal input/output	INPUT A	RGB / Y Pb Pr input connector: Mini D-sub 15-pin (female) Audio input connector: Stereo mini jack (shared with VIDEO IN)		
	INPUT B	HDMI input connector: HDMI 19-pin, HDCP support Audio input connector: HDMI audio support		
	VIDEO IN	Video input connector: Pin jack Audio input connector: Shared with INPUT A		
Control signal input/output, Others		LAN connector: RJ-45, 10BASE-T/100BASE-TX USB: Type-A, Type-B		
Speaker		1 W x 1 (monaural)		
Operating temperature (Operating humidity)		0°C to 35°C / 32°F to 95°F (20% to 80%; no condensation)		
Storage temperature (Storage humidity)		-10°C to +60°C / 14°F to +140°F (20% to 80%; no condensation)		
Power requirements		AC 100 V to 240 V, 3.0 A to 1.2 A, 50 Hz / 60 Hz		
Power consumption (Lamp mode: High / Standard / Low)	AC 100 V to 120 V	301 W / 224 W*2 / 200 W*2	298 W / 221 W*2 / 200 W*2	297 W / 221 W*2 / 200 W*2
	AC 220 V to 240 V	287 W / 213 W*2 / 190 W*2	286 W / 212 W*2 / 190 W*2	285 W / 212 W*2 / 190 W*2
Standby mode power consumption (Standby mode: Standard / Low)	AC 100 V to 120 V	<5.9 W / <0.5 W		
	AC 220 V to 240 V	<5.9 W / <0.5 W		
Heat dissipation	AC 100 V to 120 V	1024 BTU	1014 BTU	1011 BTU
	AC 220 V to 240 V	977 BTU	973 BTU	970 BTU
Outside dimensions		W 315 x H 75 x D 230.5 mm (W 12 13/32 x H 2 15/16 x D 9 1/16 inches) (without protrusions)		
Mass		2.6 kg / 5.8 lb		
Supplied accessories		RM-PJ8 Remote Commander (1), Lithium battery: CR2025 (1), AC Power Cord (1), Operating Instructions (CD-ROM) (1), Quick Reference Manual (1), Mini D-sub 15-pin cable (1), Lens cap (1), Carrying case (1), Projector Station for Network Presentation application (CD-ROM) (1), USB wireless LAN module IFU-WLM3 (1)		
Replacement lamp		LMP-D213		

\*1 The figures are the expected maintenance time and not guaranteed. They will depend on the environment or how the projector is used.

\*2 The values are estimate.

\*3 This value is average.

\*4 Available for the VESA Reduced Blanking signal.

# SPECIFICATIONS

		VPL-DW122	VPL-DX142	VPL-DX122	VPL-DX102
Display system		3 LCD system			
Display device	Size of effective display area	0.59" (15 mm) x 3 BrightEra Aspect ratio: 16:10	0.63" (16 mm) x 3 BrightEra Aspect ratio: 4:3		
	Number of pixels	3,072,000 (1280 x 800 x 3) pixels	2,359,296 (1024 x 768 x 3) pixels		
Projection lens	Zoom	Optical: Manual (Approx. x 1.3)		Optical: Manual (Approx. x 1.2)	
	Focus	Manual			
	Throw ratio	1.36:1 to 1.77:1	1.37:1 to 1.80:1	1.47:1 to 1.77:1	
Light source	Ultra high pressure mercury lamp 210 W type				
Recommended lamp replacement time*1	3000 H / 5000 H / 10000 H (Lamp mode: High / Standard / Low)				
Filter cleaning cycle*1	Max. 1000 H				
Screen size	30" to 300" (0.76 m to 7.62 m)				
Light output (Lamp mode: High / Standard / Low)		2600 lm / 1900 lm*2 / 1500 lm*2	3200 lm / 2300 lm*2 / 2000 lm*2	2600 lm / 1900 lm*2 / 1700 lm*2	2300 lm / 1800 lm*2 / 1500 lm*2
Color light output (Lamp mode: High / Standard / Low)		2600 lm / 1900 lm*2 / 1500 lm*2	3200 lm / 2300 lm*2 / 2000 lm*2	2600 lm / 1900 lm*2 / 1700 lm*2	2300 lm / 1800 lm*2 / 1500 lm*2
Contrast ratio (full white / full black)*3		3000:1			
Displayable scanning frequency	Horizontal	19 kHz to 92 kHz			
	Vertical	48 Hz to 92 Hz			
Display resolution	Computer signal input	Maximum display resolution: UXGA 1600 x 1200 dots*4 Panel display resolution: 1280 x 800 dots			
	Video signal input	Panel display resolution: 1024 x 768 dots NTSC, PAL, SECAM, 480/60i, 576/50i, 480/60p, 576/50p, 720/60p, 720/50p, 1080/60i, 1080/50i, 1080/60p. The following items are available for digital signal (HDMI input) only. 1080/60P, 1080/50p			
Color system		NTSC3.58, PAL, SECAM, NTSC4.43, PAL-M, PAL-N			
Keystone correction		Max. Vertical: +/- 30 degrees			
OSD language		23-languages (English, Dutch, French, Italian, German, Spanish, Portuguese, Turkish, Polish, Russian, Swedish, Norwegian, Japanese, Simplified Chinese, Traditional Chinese, Korean, Thai, Vietnamese, Arabic, Farsi, Finnish, Indonesian, Hungarian)			
Computer and video signal input/output	INPUT A	RGB / Y Pb Pr input connector: Mini D-sub 15-pin (female) Audio input connector: Stereo mini jack (shared with VIDEO IN)			
	INPUT B	HDMI input connector: HDMI 19-pin, HDCP support Audio input connector: HDMI audio support			
	VIDEO IN	Video input connector: Pin jack Audio input connector: Shared with INPUT A			
Speaker		1 W x 1 (monaural)			
Operating temperature (Operating humidity)		0°C to 35°C / 32°F to 95°F (20% to 80%; no condensation)			
Storage temperature (Storage humidity)		-10°C to +60°C / 14°F to +140°F (20% to 80%; no condensation)			
Power requirements		AC 100 V to 240 V, 2.9 A to 1.2 A, 50 Hz / 60 Hz			
Power consumption (Lamp mode: High / Standard / Low)	AC 100 V to 120 V	288 W / 220 W*2 / 200 W*2	290 W / 220 W*2 / 200 W*2	289 W / 220 W*2 / 200 W*2	282 W / 220 W*2 / 200 W*2
	AC 220 V to 240 V	275 W / 215 W*2 / 190 W*2	277 W / 210 W*2 / 190 W*2	278 W / 215 W*2 / 190 W*2	271 W / 210 W*2 / 190 W*2
Standby mode power consumption (Standby mode: Low)	AC 100 V to 120 V	<0.5 W			
	AC 220 V to 240 V	<0.5 W			
Heat dissipation	AC 100 V to 120 V	980 BTU	987 BTU	985 BTU	960 BTU
	AC 220 V to 240 V	936 BTU	943 BTU	946 BTU	922 BTU
Outside dimensions		W 315 x H 75 x D 230.5 mm (W 12 13/32 x H 2 15/16 x D 9 1/16 inches) (without protrusions)			
Mass		2.5 kg / 5.5 lb			
Supplied accessories		RM-PJ8 Remote Commander (1), Lithium battery: CR2025 (1), AC Power Cord (1), Operating Instructions (CD-ROM) (1), Quick Reference Manual (1), Mini D-sub 15-pin cable (1), Lens cap (1), Carrying case (1)			
Replacement lamp		LMP-D213			

\*1 The figures are the expected maintenance time and not guaranteed. They will depend on the environment or how the projector is used.

\*2 The values are estimate.

\*3 This value is average.

\*4 Available for the VESA Reduced Blanking signal.

## Distributed by

©2014 Sony Corporation. All rights reserved.

Reproduction in whole or in part without written permission is prohibited.

Features and specifications are subject to change without notice.

The values for mass and dimension are approximate.

"SONY", "BrightEra" and "Remote Commander" are trademarks of Sony Corporation.

Trademark PJLink is a trademark applied for trademark rights in Japan, the United States of America and other countries and areas.

The terms HDMI and HDMI High-Definition Multimedia Interface,

and the HDMI Logo are trademarks or registered trademarks of

HDMI Licensing LLC in the United States and other countries.

Pixelworks and VueMagic™ are trademark of Pixelworks Inc.

App Store is a service mark of Apple Inc.

All other trademarks are the property of their respective owners.