

Fully featured ultra short throw LCD projector with network capabilities and a low operating cost all in a portable design.



## Key Features

- WXGA 1280 x 800 resolution
- 3,000 ANSI lumens white/color output
- 4000:1 contrast ratio
- 4,000 hours hybrid filter\*
- 2,500 hours lamp life (Standard mode) and 4,000 hours lamp life (Eco mode)\*\*
- ImageCare technology
- Wireless compatible
- Projector Quick Connection iOS App

**1.800.HITACHI**  
**dmd.info@hal.hitachi.com**  
**hitachi-america.us/projectors**



Hitachi's CP-AW312WN ultra short throw LCD projector combines an array of advanced features in a compact, portable design perfectly suited for classrooms of any size. Small in size, but big on performance, the CP-AW312WN provides vibrant image quality, cost-effective operation, and long-lasting reliability. The CP-AW312WN incorporates a cloning function which enables you to copy configuration settings from one projector to others of the same model via USB memory. Plus, Hitachi's Intelligent Eco Mode with ImageCare combines optimal picture performance with energy savings for a lower total cost of ownership. For added peace of mind, Hitachi's CP-AW312WN is also backed by a generous warranty and our world-class service and support programs.

# CP-AW312WN



## UNIQUE FEATURES

### Drawing Function with Optional Tablet (TB-1)



The optional Hitachi wireless tablet and pen allows you to engage your audience by annotating over images shown on the projector.

### Cloning Function



Copy configuration settings from one projector to others of the same model via USB memory. Cloning can save almost all PJ settings such as gamma and keystone via USB memory.

### ImageCare Technology



ImageCare is a lamp power control function that combines optimal picture performance with maximum energy savings by decreasing energy usage, improving contrast ratio and lengthening lamp life. The result is a lower total cost of ownership and decreased maintenance cost.

### Intelligent Eco and Saver Modes



Automatically changes the brightness of the lamp according to the brightness level of the screen. Also, automatically changes the brightness of the lamp if there is no change in the screen image. Using ImageCare technology, these features give optimal picture performance with maximum energy savings.

### Perfect Fit 2



Enables the user to adjust individual corners and sides independent of one another. Perfect Fit 2 provides vertical and horizontal digital correction of either barrel or pin cushion distortions. This feature helps correct geometric and complicated distortions. Perfect Fit 2 allows the projected image to fit correctly to the screen quickly and easily.

### Projector Quick Connection iOS App



Our iOS application offers simple control options which include sending photo and document files and web site contents to the projector. Available for iPad® and iPhone® devices.

### Tabletop Presentation



Make any tabletop a projection screen using the optional tabletop stand. Ideal for a small group environment or in a room with limited space.

## STANDARD FEATURES

### Display via USB



Simply plug and play using the USB port instead of the 15-pin D-sub VGA cable. Also offers video and sound transfer from PC to projector.

### Input Source Naming



Users can name input sources in simple language instead of factory default name. **Exclusive to Hitachi.**

HI0116-02/13 WEB

All specifications subject to change without notice.  
3LCD and the 3LCD logo are registered trademarks of the Seiko Epson Corporation.  
iPad and iPhone are registered trademarks of Apple Inc., registered in the U.S. and other countries.  
©2012 Hitachi America, Ltd. All Rights Reserved.

### Hitachi America, Ltd.

900 Hitachi Way, Chula Vista, CA 91914  
Toll Free: 1.800.HITACHI • Email: dmd.info@hal.hitachi.com  
Web: hitachi-america.us/projectors

### Microphone Input



A microphone can be used via the jack located on the input panel. Allows for more dynamic presentations even in standby mode.

### Network Control, Maintenance and Security



Embedded networking gives you the ability to manage and control multiple projectors over your LAN. Features include scheduling of events, centralized reporting, image transfer and e-mail alerts for reactive and routine maintenance.

### PC-Less Presentation



By using a USB memory stick or other storage device, you can use the projector without a computer. Menus are easy to see with a thumbnail display. Additionally there is also a slideshow and video function.

### PIN Lock / MyScreen / MyText



PIN lock protection can limit projector users. MyScreen PIN lock keeps captured images on the startup screen. Users can set any name logo to MyScreen, clearly identifying ownership. MyText provides the ability to write text on the startup screen such as model name, serial number or location.

### PJMessenger



PJMessenger function allows you to send and display text messages and audio alerts on your networked projectors. It is an easy and efficient way to send announcements out to multiple units.

### Present Content via LAN



Hitachi's suite of networking software allows you to easily send content directly from your PC to the projector via your LAN connection.

### Serial Number and Media Access Control Label



A label is affixed to the front of the projector to more easily access and read the model name and serial number while mounted in ceiling use. This is a convenience for installers, end user and auditors for instant accessibility.

### Template Function



Line templates in the projector menu can help when writing on a whiteboard. There are four types of line templates to choose from.

### Wireless Presentation Ready



You can use a wireless network by connecting the projector to a computer using the optional USB wireless adapter part number USBWL11N. The adapter supports IEEE802.11b/g and the latest 11n.



Ultra Short Throw Series



# CP-AW312WN LCD Projector

**HITACHI**  
Inspire the Next

## Enhance the educational experience with Hitachi's CP-AW312WN.

The CP-AW312WN ultra short throw LCD projector from Hitachi is specifically designed to enhance the educational experience – for students and teachers. Leading edge projector technology helps stimulate the imagination of students of all ages and makes lessons become more interesting, compelling and memorable. Vivid colors. Bold graphics. Crisp text. The CP-



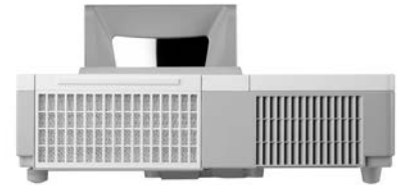
AW312WN does it all in classrooms of all sizes. With 3,000 ANSI lumens brightness and WXGA 1280 x 800 resolution, the CP-AW312WN provides the perfect solution. It also features a high contrast ratio, long lamp life, cloning function enabling you to copy configuration settings from one projector to others of the same model, and is wireless presentation ready. Plus, embedded networking gives you the ability to manage and control multiple projectors over your LAN (scheduling of events, centralized reporting, image transfer, and email alerts). Best of all, the high performance CP-AW312WN is exceptionally reliable and offers a lower cost of ownership.



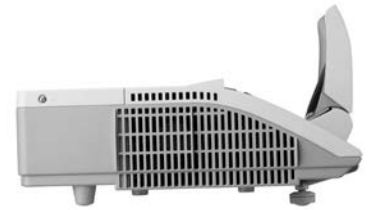
Front 3/4 View



Top View



Rear View

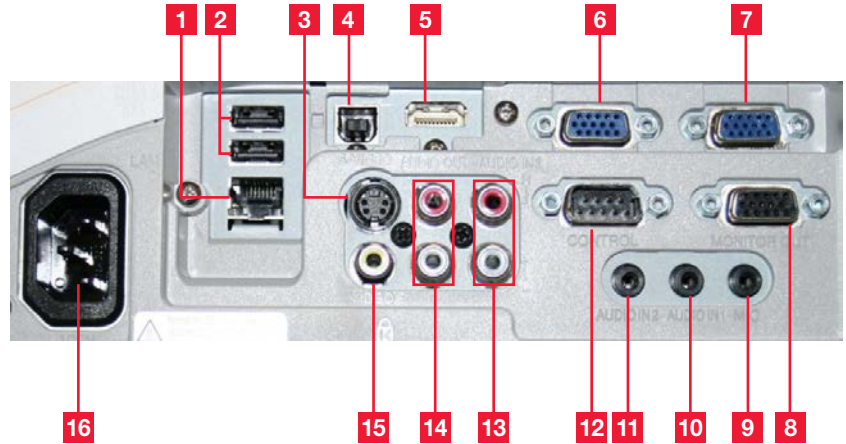


Right Side Profile



Ultra Short Throw Series

## Input/Outputs



1. LAN
2. USB Type A x 2
3. S-Video
4. USB Type B
5. HDMI

6. Computer in 2
7. Computer in 1
8. Monitor Out
9. Microphone Input
10. Audio in 1
11. Audio in 2

12. Control (RS-232C)
13. Audio in 3
14. Audio Out
15. Composite Video
16. AC In



3LCD Technology



Closed Captioning



Crestron Integrated Partner



AMX Device Discovery



Hitachi Trade-Up Program



3 Year Warranty

**HDMI** HDMI

HIO116-02/13 WEB

All specifications subject to change without notice.  
3LCD and the 3LCD logo are registered trademarks of the Seiko Epson Corporation.  
iPad and iPhone are registered trademarks of Apple Inc., registered in the U.S. and other countries.  
©2012 Hitachi America, Ltd. All Rights Reserved.

### Hitachi America, Ltd.

900 Hitachi Way, Chula Vista, CA 91914  
Toll Free: 1.800.HITACHI • Email: dmd.info@hal.hitachi.com  
Web: hitachi-america.us/projectors

# CP-AW312WN





| Accessories                 |  |
|-----------------------------|--|
| <b>Supplied Accessories</b> | Remote control, power cord, computer cable, user's manual, network manual      |
| <b>Optional Accessories</b> | UST1WALLARM, A3WALLARM, TT-251 tabletop stand, USBWL11N - USB wireless adapter |
| Replacement Parts           |  |
| <b>Lamp</b>                 | DT01411  |
| <b>Remote Control</b>       | HL02882  |
| <b>Filter</b>               | UX37191  |

Projection Throw Chart (In inches)

| Screen Size 16:10 | Throw Distance |   |
|-------------------|----------------|---|
|                   | Diagonal       | Distance from leading edge of projector to screen |
| 60                | 4.7            | 16.8  |
| 70                | 7.4            | 19.5  |
| 80                | 10.1           | 22.1  |
| 90                | 12.8           | 24.8  |
| 100               | 15.4           | 27.5  |

Throw Ratio: (distance : width)  
 0.1 : 1 from edge of projector  
 0.3 : 1 from mirror

| Specifications         |  |  |
|------------------------|--|--|
| Display                | <b>Projection Technology</b>             | 3LCD, 3 chip technology  |
|                        | <b>Resolution</b>                        | WXGA - 1280 x 800  |
|                        | <b>White Light Output</b>                | 3,000 ANSI lumens  |
|                        | <b>Color Light Output</b>                | 3,000 ANSI lumens  |
|                        | <b>Colors</b>                            | 16.7 million colors  |
|                        | <b>Aspect Ratio</b>                      | Native 16:10 / 16:9 and 4:3 compatible   |
| Lens & Operation       | <b>Contrast Ratio</b>                    | 4000 : 1 (using active IRIS)   |
|                        | <b>Throw Ratio</b><br>(distance : width) | 0.1 : 1 from edge of projector to screen<br>0.3 : 1 from mirror to screen                        |
|                        | <b>Lens</b>                              | F = 1.8, f = 4.1 mm  |
|                        | <b>Lamp Wattage</b>                      | 250W   |
|                        | <b>Expected Lamp Life*</b>               | Approximately 2,500 hours (standard mode)<br>4,000 hours (Eco mode)                              |
|                        | <b>Expected Filter Life**</b>            | Approximately 4,000 hours  |
|                        | <b>Speaker Output</b>                    | 16W  |
|                        | <b>Acoustic Noise Level</b>              | 37 dB (30 dB in Eco mode)  |
|                        | <b>Keystone</b>                          | H and V: +/- 5°  |
|                        | Compatibility                            | <b>Computer</b>  |
| <b>H-Sync</b>          |  | 31.5 kHz - 106 kHz   |
| <b>V-Sync</b>          |  | 56 Hz - 120 Hz   |
| <b>Composite Video</b> |  | NTSC, NTSC4.43, PAL, PAL-M, -N, SECAM  |
| <b>Component Video</b> |  | 480i, 480p, 576i, 720p, 1080i, 1080p   |
| Connectors             | <b>HDMI</b>                              | 480i, 480p, 576i, 720p, 1080i, 1080p, computer signal TMDS clock 27 MHz - 150 MHz                |
|                        | <b>Digital Input</b>                     | HDMI x 1 (HDCP compliant)  |
|                        | <b>Computer Input 1</b>                  | 15-pin mini D-sub x 1  |
|                        | <b>Computer Input 2</b>                  | 15-pin mini D-sub x 1  |
|                        | <b>Computer Monitor Output</b>           | 15-pin mini D-sub x 1  |
|                        | <b>Video Input</b>                       |  |
|                        | S-Video                                  | Mini DIN 4-pin x 1   |
|                        | Composite Video                          | RCA jack x 1   |
|                        | Component Video                          | 15-pin mini D-sub x 2, (shared with computer in 1/2)   |
|                        | <b>Audio Input</b>                       | 3.5 mm stereo mini jack x 2, RCA jack (L/R) x 1, MIC-in 3.5 mm mini jack x 1                     |
|                        | <b>Audio Output</b>                      | RCA jack (L/R) x 1   |
|                        | <b>Network LAN Wired</b>                 | RJ-45 port (10 base-T / 100 base-TX)   |
|                        | <b>Network LAN Wireless</b>              | USB-A, IEEE802.11 b/g/n - optional wireless adapter required                                     |
|                        | <b>USB</b>                               | Type A x 2 (PC-less presentation, wireless adapter)<br>Type B x 1 (USB display or mouse control) |
|                        | <b>Control Terminals</b>                 | 9-pin mini D-sub x 1 (RS-232 control)  |
| Ratings & Warranty     | <b>Power Supply</b>                      | AC100-120V / AC220-240V, 50/60Hz   |
|                        | <b>Power Consumption</b>                 | 370W   |
|                        | <b>Operating Temperature</b>             | 32°F - 104°F (0°C - 40°C)  |
|                        | <b>Dimensions (W x D x H)</b>            | 13.6" x 11.9" x 3.4" (excl. protruding parts)  |
|                        | <b>Weight</b>                            | approx. 8.4 lbs  |
|                        | <b>Approvals</b>                         | UL 60950-1 / cUL FCC Part 15 subpart B Class B   |
|                        | <b>Warranty</b>                          | 3 year limited parts and labor.<br>Extended Service Contract available (additional cost)         |

\* Actual lamp life will vary by individual lamp and based on environmental conditions, selected operating mode, user settings and usage. Hours of average lamp life specified are not guaranteed and do not constitute part of the product or lamp warranty. Lamp brightness decreases over time.  
 \*\* Actual filter life will vary by individual filter and based on environmental conditions, selected operating mode, user settings and usage. Hours of average filter life specified are not guaranteed and do not constitute part of the product warranty.

# CP-AW312WN

HIO116-02/13 WEB  
 All specifications subject to change without notice.  
 3LCD and the 3LCD logo are registered trademarks of the Seiko Epson Corporation.  
 iPad and iPhone are registered trademarks of Apple Inc., registered in the U.S. and other countries.  
 ©2012 Hitachi America, Ltd. All Rights Reserved.

**Hitachi America, Ltd.**  
 900 Hitachi Way, Chula Vista, CA 91914  
 Toll Free: 1.800.HITACHI • Email: dmd.info@hal.hitachi.com  
 Web: hitachi-america.us/projectors

