

PROJECTOR

EB-S02/S11/S12

EB-X02/X11/X12/X14

EB-W01/W02/W12

EPSON
EXCEED YOUR VISION

An extensive projector series for your unique presentation needs – now within your reach



* Source: Futuresource Consulting

This versatile projector series harnesses Epson's latest 3LCD technology to deliver impeccable, high-quality images for powerful school and office presentations. With a varied selection of projector models to choose from, you are sure to find one that will suit your needs and offer great value for your money.

- **Enjoy versatility of use**
With the first-ever sliding Horizontal Keystone Adjuster and the automatic vertical keystone detector and adjustment, presentation set-up is made fast and easy, even for beginners
- **Accomplish more with less**
With the built-in HDMI terminal, projecting high-quality images and sounds, and creating impactful PC-less slideshows are made possible
- **Experience added convenience**
With the 3-in-1 USB display, you gain easy access to control, image and sound transmission without the messy cabling



This versatile projector series harnesses Epson's latest 3LCD technology to deliver impeccable, high-quality images for powerful school and office presentations. With a varied selection of projector models to choose from, you are sure to find one that will suit your needs and offer great value for your money.



EB-S02/S11/S12
EB-X02/X11/X12/X14
EB-W01/W02/W12

ENJOY VERSATILITY OF USE

Deliver powerful presentations anywhere in the room. With the easy-to-use sliding Horizontal Keystone Adjuster*, screen corrections can be done quickly, easily and accurately, for both beginners and experienced users.



Sliding Horizontal Keystone Adjuster

With automatic vertical keystone detection and adjustment**, there is no longer any need for awkward and time-consuming manual image adjustments that interrupt the smooth flow of your presentation delivery. This handy feature automatically detects the projector's vertical keystone distortion and corrects it instantly.



Automatic



* For EB-S12/X11/X12/X14/W12 only. (S11 with Horizontal Keystone Button)

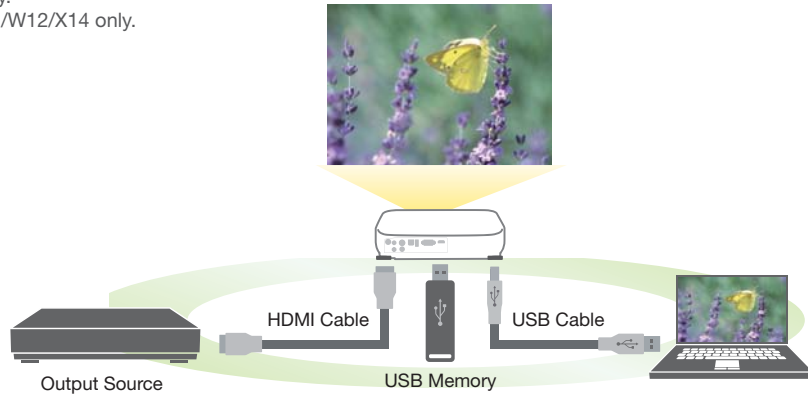
** For EB-S02/S12/X02/X11/X12/X14/W02/W12 only.

ACCOMPLISH MORE WITH LESS

The built-in HDMI terminal* makes transmitting high-quality images and sounds possible. You can even view a jpeg, bmp, png or gif slideshow without a PC** by simply inserting a USB memory device into the connection on the projector. Operation of the projector is also made convenient by using either the remote control or the operation panel.

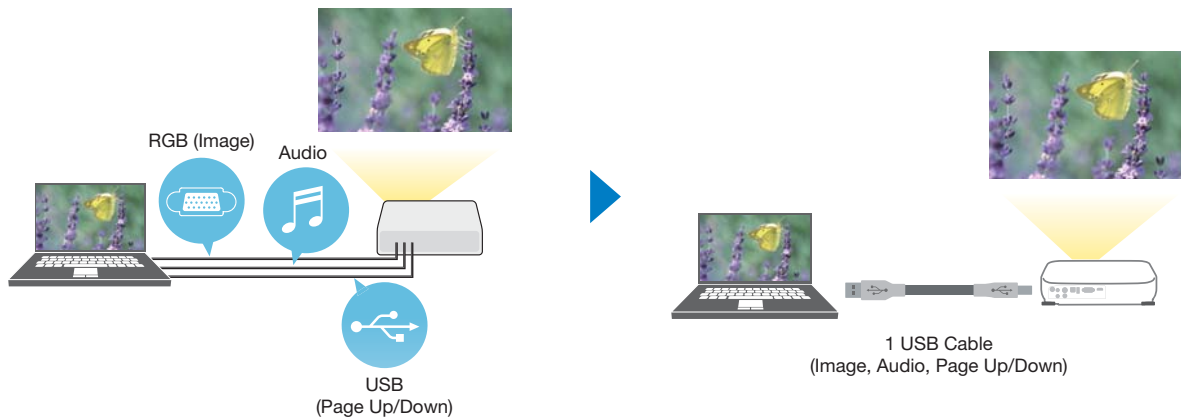
* For EB-X12/W12/X14 only.

** For EB-S11/S12/X11/X12/W12/X14 only.



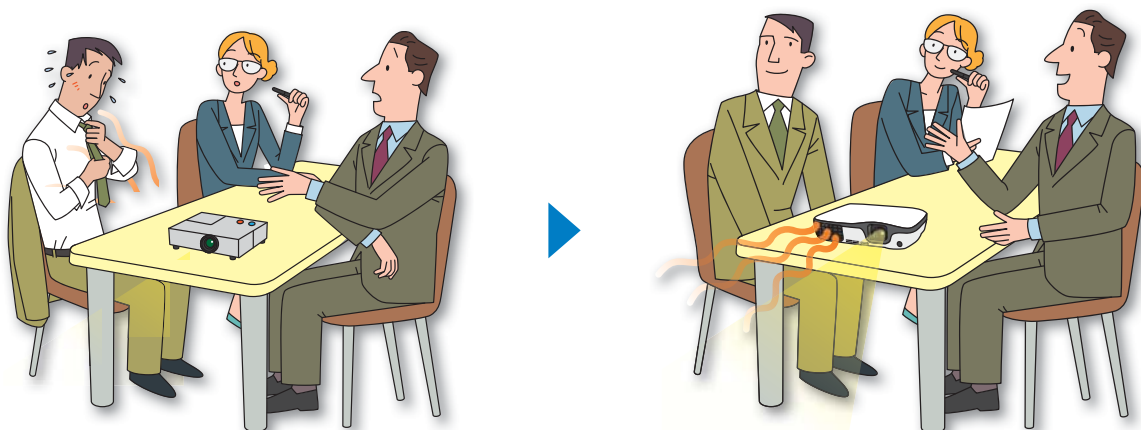
EXPERIENCE ADDED CONVENIENCE

Designed to better assist the way you teach or present, this series features a 3-in-1 USB display. This allows control, image and sound transmission from a computer to the projector via a USB cable, eliminating the need for complicated cabling. A built-in speaker also allows you to enjoy powerful sound without the need of connecting a separate speaker.



CLEVERLY POSITIONED EXHAUST ELIMINATES DISTRACTION

The exhaust is intelligently positioned in the front, preventing anyone from being exposed to the hot exhaust, especially when on a narrow table. This enables the audience seated at the side or back of the projector to fully concentrate on the presentation.



CONNECT DIRECTLY TO A DOCUMENT CAMERA

This projector series conveniently connects directly to Epson's Portable Document Camera ELPDC06 via a USB cable without a computer, revolutionising the way you present. Simply place the presentation material under the camera and enlarge the projection according to the desired size – perfect for classroom and office discussions.



REMOTE CONTROL

You can attach a strap to the remote control to prevent loss. (Strap not included.)



LONG-LASTING LAMP LIFE OF UP TO 5,000 HOURS

Enjoy greater cost savings and ease of maintenance with Epson's proprietary long-lasting E-TORL lamp. Designed to optimise light output, the highly efficient Epson E-TORL lamp delivers noticeably brighter images with greater power efficiency.

E-TORL Lamp
Conventional Lamp



Brightness of E-TORL lamp compared to a conventional lamp of same power.

SMALL AND STYLISH – YOUR PERFECT PRESENTATION COMPANION

An expression of beauty for your tabletop, the small and sleek design of the projector provides an added elegance to your presentations. Lightweight and compact, this projector is the ideal portable solution to all your presentations on the move.



Eco Features

- Equipped with an E-TORL lamp engineered to maximise light usage and power efficiency
- Uses just 0.47 W of power in standby mode
- Projector optics employ lead-free lenses
- Unpainted plastic housing reduces the environment impact
- The flame retardants used in the plastic housing do not contain chlorine or bromine

Better Products for a Better Future™

For more information on Epson's environmental programmes, visit www.epson.com/environment



EB-W01



EB-S02/X02/W02



EB-S11/X11*



EB-S12/X12/X14/W12

* EB-X11 with sliding Horizontal Keystone Adjuster.

PARTNERS IN PERFECTION

Ultraportable Document Camera ELPDC06



Easily portable; 0.96 kg/2.11 lbs
1.92 megapixels with 15 fps
4x digital zoom
USB powered

Desktop Document Camera ELPDC11



2.2 kg/4.85 lbs
5 megapixels with 30 fps
10x digital zoom
Bundled with microscope adaptor

Interactive Unit ELPIU01



USB powered
Easy interactive function
Simple and easy set-up

Epson Revolutionises Projector Market with 3LCD Technology and Leads as World's No.1* Projector Brand for 10 Consecutive Years!

* Based on independent research by Futuresource Consulting

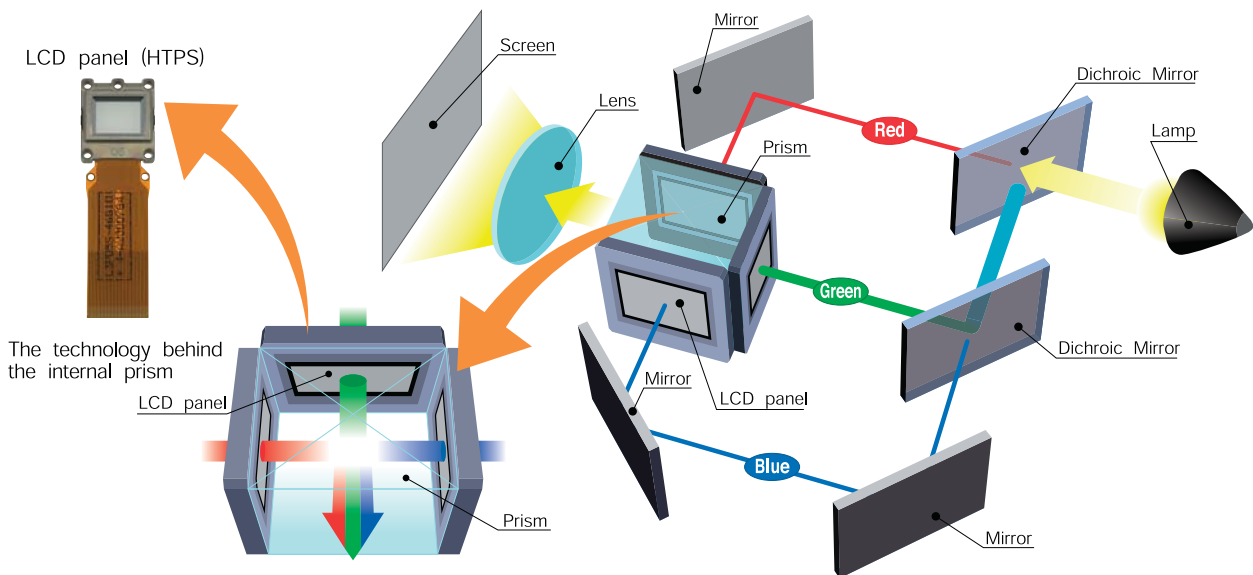
Advantages of 3LCD Projection System

Bright Images and Faithful Colour Reproduction

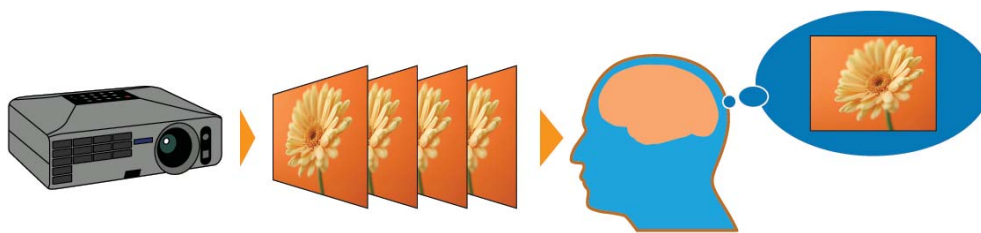
3LCD projectors offer all-time colour (Red, Green and Blue) projection thereby ensuring faithful full colour reproduction. This is suitable for projection of colour intensive images such as videos, photographs and colour charts.

Incredible Details

3LCD projectors are able to produce an unparalleled range of grayscale images, which contributes to delivering incredible colour images that are smooth and seamless.



3LCD projector : RGB are projected at the same time, which makes the single composite image easy on the eyes.



** HTPS (High Temperature Poly-Silicon) is an active matrix transmissive LCD. It is extremely small and produces high-quality images.

Gentle on the Eyes

3LCD projectors' images do not suffer from colour break-up (commonly known as the rainbow effect). The projections are easy on the eyes as you will not be affected by any distorted pattern.

3LCD projectors use 3 separate LCD panels to form a continuous image containing all colours (red, blue and green) ensuring smooth video playback, even for rapid-motion images.

Reliable Technology

With more than 60 million 3LCD chips shipped to date, the powerful and road-tested 3LCD projection technology is extremely reliable, and is trusted by many throughout to deliver sharp and true-to-life images.

Colour Light Output

- an easy way to evaluate projector colour output

What is Colour Light Output?

Colour Light Output (CLO) is a specification that provides critical information on a projector's ability to deliver colour. Developed by colour scientists using the same approach as White Light Output (Brightness) measurement, Colour Light Output provides the buyer with additional key information about colour.

Does Brightness measure colour?

No. Current product specifications such as Brightness (or White Light Output), Contrast Ratio and Resolution give no information regarding a projector's ability to reproduce colour. The existing Brightness specification only measures the total amount of White Light projected. It does not measure colour – in fact, many manufacturers artificially boost brightness by adding white light, which dilutes the projector's colour brightness.

Why is Colour Light Output important?

Colour Light Output is critically important because it measures the brightness of Red, Green and Blue. Red, Green and Blue create white when combined in the right proportions. They also comprise the input signal that tells your projector how to reproduce colour images. Beautifully balanced colour is possible when bright Red, Green and Blue combine to produce the brightness equal to White. Colour Light Output provides users with an additional way to evaluate a projector and make more discerning buying decisions.

Is Colour Light Output the same in all projectors?

No. There are vast differences in the Colour Light Output of projectors on the market today. Look at the images below from two competing projectors

3LCD Projector



Image #1*

Brand X



Image #1*



Image #2*



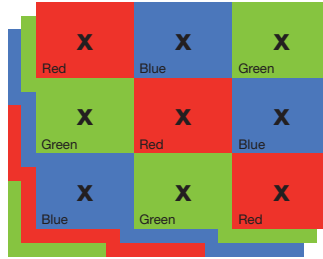
Image #2*

Colour Light Output specification describes the difference in colour between these two projectors.

How is Colour Light Output measured?

X	X	X
X	X	X
X	X	X

Brightness (or White Light Output) measures the total amount of white light projected in lumens on a nine point grid. It does not measure colour.

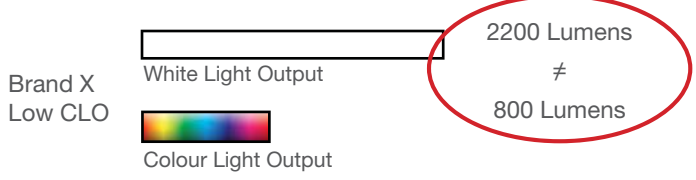
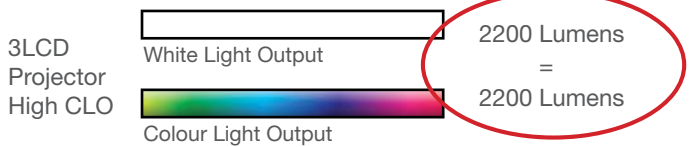


Colour Light Output uses 3 sets of a nine-point grid to measure the primary colours - red, green and blue, using the same approach used to measure White Light Output in lumens.

How should Colour Light Output be used?

Colour Light Output should be used with White Light Output to provide insight into a projector's overall picture quality. Two things to remember:

1. Select High Colour Light Output.
2. Make sure the Colour Light Output equals the White Light Output.



When selecting a projector, ask for the Colour Light Output measurement.

* Actual photographs of images produced by 2 competing projectors run in default mode. Price, Resolution and Brightness (White Light Output) are the same for both projectors.



EB-S02/S11/S12

SPECIFICATIONS

SUPPLIED ACCESSORIES		MODEL NUMBER	EB-S02	EB-S11	EB-S12
Power Cord	1.8m	PROJECTION SYSTEM	RGB liquid crystal shutter projection system		
Computer Cable	1.8m	PROJECTION METHOD	Front / Rear / Ceiling mount		
USB Cable	1.8m, USB-A / USB-B (EB-S12)	SPECIFICATION OF MAIN PARTS			
Remote Control	With batteries x 2	LCD			
User's Manual Set		SIZE	0.55-inch without MLA (D7)		
Soft Carrying Case	EB-S11, EB-S12	DRIVING METHOD	Poly-silicon TFT active matrix		
		PIXEL NUMBER	480,000 dots (800 x 600) x 3		
		NATIVE RESOLUTION	SVGA		
		NATIVE ASPECT RATIO	4:3		
		PROJECTION LENS			
		TYPE	Manual focus and digital zoom		
		F-NUMBER	1.44		
		FOCAL LENGTH	16.7 mm		
		ZOOM RATIO	1.0 - 1.35 (Digital Zoom)		
		LAMP			
		TYPE	200 W UHE (E-TORL)		
		LIFE (NORMAL/ECO)	4,000 hours / 5,000 hours		
		BRIGHTNESS*			
		WHITE LIGHT OUTPUT (NORMAL/ECO)	2,600 lm / 2,080 lm		2,800 lm / 2,240 lm
		COLOUR LIGHT OUTPUT (NORMAL/ECO)	2,600 lm / 2,080 lm		2,800lm / 2,240 lm
		CONTRAST RATIO**	3000:1		
		SCREEN SIZE (PROJECTED DISTANCE)	23" - 350" [0.88 - 10.44 m]		
			60" screen [1.77 - 2.40 m]		
		THROW RATIO	1.45 - 1.96 (Wide - Tele)		
		OFFSET	8:1		
		SOUND OUTPUT	1W Monaural		2W Monaural
		KEYSTONE CORRECTION			
		VERTICAL / HORIZONTAL ANGLE	±30° / -		±30° / ±30°
		AUTOMATIC	Vertical		N/A
		CONNECTIVITY			
		ANALOG INPUT	D-SUB 15PIN (BLUE)	D-Sub 15pin (Blue) x 1	
			COMPOSITE	Composite Video: RCA (Yellow) x 1	
			COMPONENT	Component Video: D-sub 15pin (Blue) (common with Analog RGB connector)	
			S-VIDEO	S-Video: Mini DIN x 1	
		SIGNAL OUTPUT	D-SUB 15PIN (BLACK)	N/A	D-sub 15pin (Black) x 1
		AUDIO INPUT	RCA	RCA (White/Red) x 1	
		AUDIO OUTPUT	STEREO MINI-JACK	N/A	Stereo Mini-Jack x 1
		DIGITAL	HDMI	N/A	
		CONTROL	RS232C	N/A	RS-232C
		OTHERS	USB TYPE A	N/A	USB TYPE A x 1
			USB TYPE B	USB TYPE B x 1	
		FUNCTIONS			
		USB DISPLAY	Yes (3-in-1)		
		USB SLIDESHOW	N/A		Yes
		OPERATING TEMPERATURE	5°C to 35°C <41°F to 95°F> (20% - 80% Humidity)		
		OPERATING ALTITUDE***	0 to 2286 m <0 ft to 7500 ft>		
		START-UP PERIOD	About 5 seconds		
		DIRECT POWER ON/OFF	Yes / Yes		
		COOL-DOWN PERIOD	Instant off		
		POWER SUPPLY VOLTAGE	100 - 240 V AC +/- 10%, 50/60 Hz		
		POWER CONSUMPTION			
		220-240V	LAMP ON	270W	
			STANDBY (NETWORK OFF)	0.47W	
		DIMENSIONS EXCLUDING FEET (D X W X H)	228 x 295 x 77 mm (8.97" x 11.6" x 3.03")		
		WEIGHT	Approx. 5.1 lbs / 2.3 kg		
		FAN NOISE (NORMAL/ECO)	37 dB / 29 dB		

SUPPLIED ACCESSORIES

Power Cord 1.8m
 Computer Cable 1.8m
 USB Cable 1.8m, USB-A / USB-B (EB-S12)
 Remote Control With batteries x 2
 User's Manual Set
 Soft Carrying Case EB-S11, EB-S12

OPTIONAL ACCESSORIES

Spare Lamp ELPLP67
 Soft Carrying Bag ELPKS63
 Air Filter Set ELPAF32

PERIPHERALS

Portable USB Document Camera ELPDC06
 Desktop Document Camera ELPDC11
 Interactive Unit ELPIU01

CONNECTOR PANEL

1 Audio-L Input
 2 S-Video Input
 3 USB (Type A)
 4 USB (Type B)
 5 Computer Input
 6 Audio Out
 7 Monitor Out
 8 Audio-R Input
 9 Video Input
 10 RS-232C



* Colour mode: Dynamic, Zoom: Wide
 ** Colour mode: Dynamic, Brightness control: Normal, Zoom: Wide
 *** Above 1500m/4,921ft: with High altitude mode

EPSON and EXCEED YOUR VISION are registered trademarks of Seiko Epson Corporation.
 All other product names and other company names used herein are for identification purposes only and are the trademarks or registered trademarks of their respective owners.
 EPSON disclaims any and all rights in those marks. Projected images shown herein are simulations. The actual product design and contents may vary. Specifications are subject to change without notice.



EB-X02/X11/X12/X14

SPECIFICATIONS

SUPPLIED ACCESSORIES		MODEL NUMBER	EB-X02	EB-X11	EB-X12	EB-X14
Power Cord	1.8m	PROJECTION SYSTEM	RGB liquid crystal shutter projection system			
Computer Cable	1.8m	PROJECTION METHOD	Front / Rear / Ceiling mount			
USB Cable	1.8m, USB-A / USB-B (EB-X12, EB-X14)	SPECIFICATION OF MAIN PARTS				
Remote Control	With batteries x 2	LCD				
User's Manual Set		SIZE	0.55-inch without MLA (D8)		0.55-inch with MLA (D8)	
Soft Carrying Case		DRIVING METHOD	Poly-silicon TFT active matrix			
		PIXEL NUMBER	786,432 dots (1024 x 768) x 3			
		NATIVE RESOLUTION	XGA			
		NATIVE ASPECT RATIO	4:3			
		PROJECTION LENS				
		TYPE	Manual focus and optical zoom			
		F-NUMBER	1.58 - 1.72			
		FOCAL LENGTH	16.9 - 20.28mm			
		ZOOM RATIO	1 - 1.2			
		LAMP				
		TYPE	200 W UHE (E-TORL)			
		LIFE (NORMAL/ECO)	4,000 hours / 5,000 hours			
		BRIGHTNESS*				
		WHITE LIGHT OUTPUT (NORMAL/ECO)	2,600 lm / 2,080 lm		2,800 lm / 2,240 lm 3,000 lm / 2,400 lm	
		COLOUR LIGHT OUTPUT (NORMAL/ECO)	2,600 lm / 2,080 lm		2,800 lm / 2,240 lm 3,000 lm / 2,400 lm	
		CONTRAST RATIO**	3000:1			
		SCREEN SIZE (PROJECTED DISTANCE)	30" - 300" [0.90 - 10.80 m] 60" screen [1.80 - 2.17 m]			
		THROW RATIO	1.48 - 1.77 (Wide - Tele)			
		OFFSET	8:1			
		SOUND OUTPUT	1W Monaural		2W Monaural	
		KEYSTONE CORRECTION				
		VERTICAL / HORIZONTAL ANGLE	±30° / -		±30° / ±30°	
		AUTOMATIC	Vertical			
		CONNECTIVITY				
		ANALOG INPUT	D-SUB 15PIN (BLUE)	D-Sub 15pin (Blue) x 1		
			COMPOSITE	Composite Video: RCA (Yellow) x 1		
			COMPONENT	Component Video: D-sub 15pin (Blue) (common with Analog RGB connector)		
			S-VIDEO	S-Video: Mini DIN x 1		
		SIGNAL OUTPUT	D-SUB 15PIN (BLACK)	N/A	D-sub 15pin (Black) x 1	N/A
		AUDIO INPUT	RCA	RCA (White/Red) x 1		
		AUDIO OUTPUT	STEREO MINI-JACK	N/A	Stereo Mini-Jack x 1	N/A
		DIGITAL	HDMI	N/A	HDMI x 1	
		CONTROL	RS232C	N/A	RS-232C	N/A
		OTHERS	USB TYPE A	N/A	USB TYPE A x 1	
			USB TYPE B	USB TYPE B x 1		
		FUNCTIONS				
		USB DISPLAY	Yes (3-in-1)			
		USB SLIDESHOW	N/A	Yes		
		OPERATING TEMPERATURE	5°C to 35°C <41°F to 95°F> (20% - 80% Humidity)			
		OPERATING ALTITUDE***	0 to 2286 m <0 ft to 7500 ft>			
		START-UP PERIOD	About 5 seconds			
		DIRECT POWER ON/OFF	Yes / Yes			
		COOL-DOWN PERIOD	Instant off			
		POWER SUPPLY VOLTAGE	100 - 240 V AC +/- 10%, 50/60 Hz			
		POWER CONSUMPTION				
		220-240V	LAMP ON	270W		
			STANDBY (NETWORK OFF)	0.47W		
		DIMENSIONS EXCLUDING FEET (D X W X H)	228 x 295 x 77 mm (8.97" x 11.6" x 3.03")			
		WEIGHT	Approx. 5.1 lbs / 2.3 kg			
		FAN NOISE (NORMAL/ECO)	37 dB / 29 dB			

SUPPLIED ACCESSORIES

Power Cord 1.8m
 Computer Cable 1.8m
 USB Cable 1.8m, USB-A / USB-B (EB-X12, EB-X14)
 Remote Control With batteries x 2
 User's Manual Set
 Soft Carrying Case

OPTIONAL ACCESSORIES

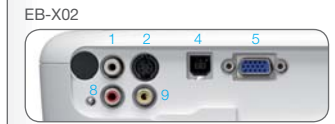
Spare Lamp ELPLP67
 Soft Carrying Bag ELPKS63
 Air Filter Set ELPAF32

PERIPHERALS

Portable USB Document Camera ELPDC06
 Desktop Document Camera ELPDC11
 Interactive Unit ELPIU01

CONNECTOR PANEL

1 Audio-L Input
 2 S-Video Input
 3 USB (Type A)
 4 USB (Type B)
 5 Computer Input
 6 Audio Out
 7 Monitor Out
 8 Audio-R Input
 9 Video Input
 10 RS-232C
 11 HDMI



* Colour mode: Dynamic, Zoom: Wide
 ** Colour mode: Dynamic, Brightness control: Normal, Zoom: Wide
 *** Above 1500m/4,921ft: with High altitude mode

EPSON and EXCEED YOUR VISION are registered trademarks of Seiko Epson Corporation.

All other product names and other company names used herein are for identification purposes only and are the trademarks or registered trademarks of their respective owners.

EPSON disclaims any and all rights in those marks. Projected images shown herein are simulations. The actual product design and contents may vary. Specifications are subject to change without notice.



EB-W01/W02/W12

SPECIFICATIONS

SUPPLIED ACCESSORIES

Power Cord	1.8m
Computer Cable	1.8m
USB Cable	1.8m, USB-A / USB-B (EB-W12)
Remote Control	With batteries x 2
User's Manual Set	
Soft Carrying Case	EB-W02, EB-W12

OPTIONAL ACCESSORIES

Spare Lamp	ELPLP67
Soft Carrying Bag	ELPKS63
Air Filter Set	ELPAF32

PERIPHERALS

Portable USB Document Camera	ELPDC06
Desktop Document Camera	ELPDC11
Interactive Unit	ELPIU01

CONNECTOR PANEL

- 1 Audio-L Input
- 2 S-Video Input
- 3 USB (Type A)
- 4 USB (Type B)
- 5 Computer Input
- 8 Audio-R Input
- 9 Video Input
- 11 HDMI

EB-W01



EB-W02



EB-W12



* Colour mode: Dynamic, Zoom: Wide

** Colour mode: Dynamic, Brightness control: Normal, Zoom: Wide

*** Above 1500m/4,921ft: with High altitude mode

EPSON and EXCEED YOUR VISION are registered trademarks of Seiko Epson Corporation.

All other product names and other company names used herein are for identification purposes only and are the trademarks or registered trademarks of their respective owners.

EPSON disclaims any and all rights in those marks. Projected images shown herein are simulations. The actual product design and contents may vary. Specifications are subject to change without notice.

MODEL NUMBER	EB-W01	EB-W02	EB-W12
PROJECTION SYSTEM	RGB liquid crystal shutter projection system		
PROJECTION METHOD	Front / Rear / Ceiling mount		
SPECIFICATION OF MAIN PARTS			
LCD			
SIZE	0.59-inch with MLA (D8)		
DRIVING METHOD	Poly-silicon TFT active matrix		
PIXEL NUMBER	1,024,000 dots (1280 x 800) x 3		
NATIVE RESOLUTION	WXGA		
NATIVE ASPECT RATIO	16:10		
PROJECTION LENS			
TYPE	Manual focus and optical zoom		
F-NUMBER	1.58 - 1.72		
FOCAL LENGTH	16.9 - 20.28 mm		
ZOOM RATIO	1 - 1.2		
LAMP			
TYPE	200 W UHE (E-TORL)		
LIFE (NORMAL/ECO)	4,000 hours / 5,000 hours		
BRIGHTNESS*			
WHITE LIGHT OUTPUT (NORMAL/ECO)	2,600 lm / 2,080 lm		2,800 lm / 2,240 lm
COLOUR LIGHT OUTPUT (NORMAL/ECO)	2,600 lm / 2,080 lm		2,800 lm / 2,240 lm
CONTRAST RATIO**	3000:1		
SCREEN SIZE (PROJECTED DISTANCE)	33" - 318" [0.90 - 10.80 m] 60" screen [1.68 - 2.02 m]		
THROW RATIO	1.30 - 1.56 (Wide - Tele)		
OFFSET	10:1		
SOUND OUTPUT	2W Monaural	1W Monaural	2W Monaural
KEystone CORRECTION			
VERTICAL / HORIZONTAL ANGLE	±30° / -		±30° / ±30°
AUTOMATIC	N/A	Vertical	
CONNECTIVITY			
ANALOG INPUT	D-SUB 15PIN (BLUE)		
COMPOSITE	N/A	Composite Video: RCA (Yellow) x 1	
COMPONENT	N/A	Component Video: D-sub 15pin (Blue) (common with Analog RGB connector)	
S-VIDEO	N/A	S-Video: Mini DIN x 1	
SIGNAL OUTPUT	D-SUB 15PIN (BLACK)		
AUDIO INPUT	RCA	N/A	RCA (White/Red) x 1
AUDIO OUTPUT	STEREO MINI-JACK		
DIGITAL	HDMI	N/A	HDMI x 1
CONTROL	RS232C		
OTHERS	USB TYPE A		USB TYPE A x 1
	USB TYPE B		USB TYPE B x 1
FUNCTIONS			
USB DISPLAY	Yes (3-in-1)		
USB SLIDESHOW	N/A		Yes
OPERATING TEMPERATURE	5°C to 35°C <41°F to 95°F> (20% - 80% Humidity)		
OPERATING ALTITUDE***	0 to 2286 m <0 ft to 7500 ft>		
START-UP PERIOD	About 5 seconds		
DIRECT POWER ON/OFF	Yes / Yes		
COOL-DOWN PERIOD	Instant off		
POWER SUPPLY VOLTAGE	100 - 240 V AC +/- 10%, 50/60 Hz		
POWER CONSUMPTION			
220-240V	LAMP ON		270W
	STANDBY (NETWORK OFF)		0.47W
DIMENSIONS EXCLUDING FEET (D X W X H)	228 x 295 x 77 mm (8.97" x 11.6" x 3.03")		
WEIGHT	Approx. 5.1 lbs / 2.3 kg		
FAN NOISE (NORMAL/ECO)	37 dB / 29 dB		

EPSON
EXCEED YOUR VISION