

VPL-SW535 Projector

WXGA resolution ultra short throw projector
with 3000 lumens brightness



The VPL-SW535 WXGA projector delivers a 0.27 - 0.29:1 throw ratio that produces a 2.03M (80") diagonal screen size image from only 0.47 - 0.49 metres (approx. 1.54 - 1.61 feet) away from the screen creating a shadow-less image. This projector has been designed to be easy to operate and to deliver a low total cost of ownership. It is an ideal choice for ultra close projection applications in the corporate and educational markets.

Furthermore, in common with all Sony projectors, the VPL-SW535 features the Sony BrightEra 3LCD inorganic panel technology that delivers higher picture quality, substantially brighter images, higher efficiency, better contrast, consistent colour stability and longer durability and usability.

The VPL-SW535 also features 3 different brightness modes to suit each individual user's needs. In the high brightness, the projector has a brightness of 3000 lumens. The low brightness mode generates lower operating costs by reducing power consumption and extending the lamp lifetime to approximately 6000 hours. This projector also has a contrast ratio of 2500:1, an HDMI digital input, video inputs, RJ45 or RS232C connectors for control, all making the VPL-SW535 an all round projector that can be installed in a wide range of close environments with the supplied mounting bracket.

Maximum 3000 lumens brightness with High, Standard and Low modes

The VPL-SW535 features three brightness modes for different uses – High for naturally white presentations in bright rooms (3000 Lumens), Standard for everyday use (2400 Lumens) and Low for video in darkened rooms (2000 Lumens).

Lens Shift Function

The projector is equipped with horizontal and vertical lens shift functions for greater installation flexibility. Using this function, the position of the projected image can be moved vertically up and down by 4.4% and horizontally from -2.7% through to +2.7%.

0.27 - 0.29:1 Throw Ratio

The VPL-SW535 offers a 0.27 - 0.29:1 throw ratio that produces a 2.03M (80") diagonal screen size image from only 0.58 metres (1.9 feet) away from the screen.

ECO Mode Key

Users can easily select power-saving ECO Modes. The most energy-efficient mode is accessible through a single button-push, with further adjustments available through an easily understood menu system.

Filter replaced at the same time as Lamp

The filter only needs to be cleaned when a new lamp is fitted, potentially halving disruption due to maintenance.

Key Features

ECO Lamp Dimming

This projector (if this function is selected) can reduce power consumption and brightness by 10-15%. After a user pre-set time, the brightness and power consumption will reduce to 30% power usage, with instant 100% brightness returning as soon as a new signal input is detected.

ECO Picture Mute - (Instant Off/Instant On)

The new ECO Picture Mute feature reduces power consumption down to 30%, saving cost and lamp hours. This feature can be used in the classroom as instant off/instant on in-between class changes. There is no need to power completely off and turn back on, which is time consuming.

6000 Hours Lamp Life

A new driving scheme reduces gap expansion which minimises brightness gradation. A new cooling system allows uniformity in the temperature of the glass bulb which prevents the glass from clouding.

Other Features

Vertical Keystone Adjustment

The projector can correct keystone distortion by +/- 5% for perfect installation adjustment to the smart board or screen. (Note that since this is an electronic correction, it will reduce the picture quality slightly.)

Digital Zoom

With Digital Zoom, users can enlarge a selected area of a computer-sourced image on the screen up to four times.

Six Picture Modes

The VPL-SW535 has six available picture modes for correct picture quality; Dynamic, Standard, Game, Living, Cinema and Presentation. With six picture modes and 3 brightness modes combined, users can select the most suitable picture/brightness mode according to the picture source and environment for the perfect image.

3LCD BrightEra Technology

The Sony 0.75 inch BrightEra inorganic TFT 3LCD panels deliver improved panel light resistance, higher resolution, high brightness and increased panel reliability.

Digital / HD Ready

With the HDMI input, the VPL-SW535 can accept digital signals from a PC or video source.

Smart APA (Auto Pixel Alignment)

When a computer is used as a picture source, APA automatically optimises Phase, Pitch and Shift values. These can also be adjusted manually.

Auto Input Search

Auto Input Search detects which input has an incoming signal and automatically switches to it. This makes it easier for users to set up the projector prior to making a presentation.

Picture Muting / Audio Muting

If there is a need to blackout the image or turn off the audio from the projector, all it takes is a single button-press on the remote control. One button will mute audio and image at the same time. There is also a separate "mute audio" button for audio-only muting.

Audio Switcher Facility

To avoid the need for a separate audio switcher, the projector can be used to select between two audio sources, routing them via a variable audio output to the room amplification system.

Picture Freeze Function

Picture Freeze is useful during presentations where users need to look at other material on their PC's screen without the viewing audience being aware. Freeze the current image and users can use their PC independently of the display from the projector.

Off and Go

At the end of a presentation, users can turn off the power supply to the projector immediately, instead of going through a 'power down' cycle.

Direct Power On/Off

With this function, there is no need to go through 'Standby' mode when powering up the projector. The projector can be set to activate as soon as power is supplied.

Built-in Security Measures

The VPL-SW535 has a package of security measures, including password protection and physical anti-theft anchor points.

Web Control and Monitoring / E-mail Report

Built-in Web Browser IE allows the user or AV manager to check a projector status remotely. Power ON/STANDBY, input/output, lamp usage (hours) can be controlled. An E-mail address can also be set to notify lamp exchange/replacement or any unexpected problems.

PrimeSupport

All Sony Professional's business projectors sold into the EU, Norway and Switzerland come supplied with a 3 year PrimeSupport pack. This offers unique services and benefits over and above standard warranty:-

3 Years Cover

Freephone telephone helpdesk support (00800 7898 7898) in 5 languages. Collection, repair and return anywhere in EU, Norway and Switzerland.

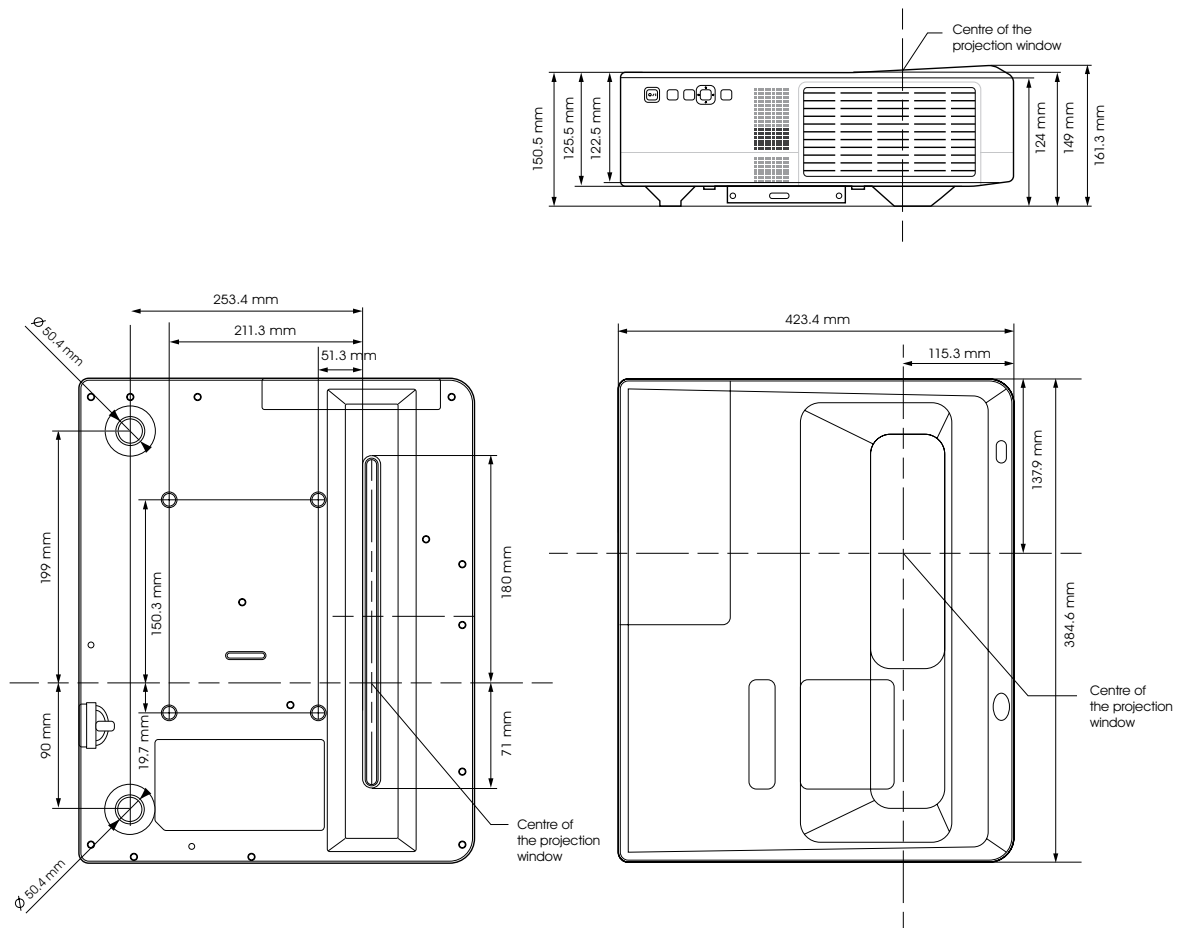
In addition, optional PrimeSupport Plus packs can be purchased which can further enhance the 3 year support to give extra peace of mind:-

- A 2 year extension of the standard 3 year PrimeSupport to give long-term assurance of expert support, technical assistance and repairs for 5 years from purchase date.
- Provision of a loan unit for 3 or 5 years cover to ensure minimal impact to the customer's business in case of product failure.

- Cover for a lamp failure throughout the 3 year PrimeSupport term for customers who don't want to have any unexpected running costs.



Dimensions



Connector Panel



Technical Specifications

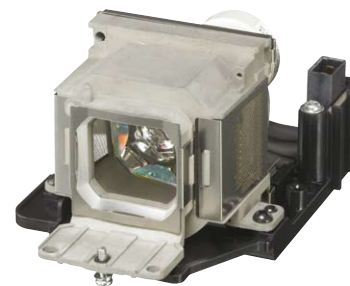
| Specifications | | VPL-SW535 |
|--|--------------------------------|---|
| Display system | | 3 LCD system |
| Display device | Size of effective display area | 0.75" (15.0 mm) x 3, BrightEra, Aspect ratio: 16:10 |
| | Number of pixels | 3,072,000 (1280 x 800 x 3) pixels |
| Projection lens | Zoom | x1.05 |
| | Focus | Manual |
| | Lens Shift | V: +/- 4.4%, H: +/- 2.7% |
| Throw Ratio | | 0.27 - 0.29:1 |
| Digital Zoom | | x4 |
| Light source | | High-pressure mercury lamp 210 W type |
| Recommended lamp replacement time*1 | | 3000 H / 4500 H / 6000 H (Lamp mode: High / Standard / Low) |
| Filter cleaning cycle*1 | | 6000 H - New Filter System |
| Screen size | | 70" to 130" (1.79 m to 3.3 m) |
| Light output (Lamp mode: High / Standard / Low) | | 3000 lm / 2400 lm / 2000 lm |
| Colour light output | | 3000 lm / 2400 lm / 2000 lm |
| Contrast ratio (full white / full black)*2 | | 2500:1 |
| Fan noise | | 28dB (low) |
| Speaker | | 1 W x 1 (monaural) |
| Displayable scanning frequency | Horizontal | 14 kHz - 93 kHz |
| | Vertical | 47 Hz - 93 Hz |
| Display resolution | Computer signal input | Maximum input signal resolution: 1600 x 1200 (resizing display) 1V60Hz Panel display resolution: 1280 x 800 pixels |
| | Video signal input | Video (Composite), 15K (480/60i, 576/50i), DTV (480/60p, 576/50p, 720/60p, 720/50p, 1080/60i, 1080/50i) |
| Colour system | | Auto / NTSC3.58, PAL, SECAM, NTSC4.43, PAL-M, PAL-N |
| Keystone correction | | Vertical: Max. +/- 5 degrees |
| OSD language | | 20-languages (English, Dutch, French, Italian, German, Spanish, Portuguese, Turkish, Polish, Russian, Swedish, Norwegian, Japanese, Simplified Chinese, Traditional Chinese, Korean, Thai, Vietnamese, Arabic, Farsi) |
| Computer and video signal input/output | INPUT A | RGB / Y PB PR input connector: Mini D-sub 15-pin (female), Audio input connector: Stereo mini jack |
| | INPUT B | HDMI™ |
| | S VIDEO IN | S video input connector: Mini DIN-4 pin Audio input connector: RCA (shared with VIDEO IN) |
| | VIDEO IN | S video input connector: Mini DIN-4 pin Audio input connector: RCA (shared with S VIDEO IN) |
| | OUTPUT | Monitor output connector*3: Mini D-sub 15-pin (female), Audio output connector*4: Stereo mini jack (variable out) |
| Control signal input/output | | RS-232C connector: D-sub 9-pin (male) LAN connector: RJ45, 10BASE-T/100BASE-TX |

| Specifications | | VPL-SW535 |
|---|--|---|
| Operating temperature (Operating humidity) | | 0°C to 40°C / 32°F to 104°F (35% to 85%; no condensation) |
| Storage temperature (Storage humidity) | | -20°C to +60°C / -4°F to +140°F (10% to 90%) |
| Power requirements | | AC 100 V to 240 V, 3.6-1.4 A, 50 Hz / 60 Hz |
| Power consumption | | 290W (High brightness mode) |
| Standby mode power consumption | | 8W / 0.3 W (Standby mode: Standard / Low) |
| Heat dissipation | | 989 BTU |
| Standard outside dimensions | | W 384.4 x H 161.1 x D 423.4 mm / W 15 1/8" x H 6 11/32" x D 16 21/32" in W 384.4 x H 122.5 x D 423.4 mm / W 15 1/8" x H 4 13/16" x D 16 21/32" in (without protrusion) |
| Mass (without wall mount) | | 7.0kg / 15lb 7oz |
| Supplied accessories | | Wall Mount Bracket, RM-PJ7 Remote Commander RM-PJ7 (1) CR2025 Lithium Battery (1) Mini D-sub 15-pin cable (1) Lens Cap (1) Operating Instructions (1) WEEE, EU Battery Info, Service Documentation, Quick Reference Manual (1), AC power cord (1) |
| Optional accessory | | LMP-E212 Projector Lamp |

*1: The figures are expected maintenance time and not guaranteed. They will depend on the environment or how the projector is used.
*2: The value is average.

*3: Not available in standby.
*4: Works as audio switcher function. From current channel only. Not available in standby.

Optional Accessory



LMP-E212
Projector Lamp (for replacement)

© 2011 Sony Corporation. All rights reserved. Reproduction in whole or in part without permission is prohibited. Features and specifications are subject to change without notice. All non-metric weights and measurements are approximate. Sony and make.believe are trademarks of Sony Corporation. All other trademarks are the property of their respective owners.

Distributed by

About Sony Professional

Sony Professional is the leading supplier of AV/IT solutions to businesses across a wide variety of sectors including, **Media and Broadcast, Video Security and Retail, Transport & Large Venue markets**. It delivers products, systems and applications to enable the creation, manipulation and distribution of digital audio-visual content that add value to businesses and their customers. With over 25 years' experience in delivering innovative market-leading products, Sony Professional is ideally placed to deliver exceptional quality and value to its customers. Sony's Professional Services division, its systems integration arm, offers its customers access to the expertise and local knowledge of skilled professionals across Europe. Collaborating with a network of established technology partners, Sony Professional delivers end to end solutions that address the customer's needs, integrating software and systems to achieve each organisations' individual business goals. For more information please visit www.pro.sony.eu

HCT_VPL-SW535_10999_UK_11/2011

SONY
make.believe