

SHARP VISION™

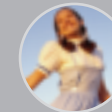


XV-Z2000 HOME THEATER PROJECTOR

This high definition DLP™ projector is a stylish, feature-packed projector ideal for the dedicated home theater or any viewing room in the home.

Utilizing the DLP™ HD2+ chip from Texas Instruments and with a resolution of 1280 x 720, the XV-Z2000 boasts a 2500:1 contrast ratio and a brightness rating of 1200 ANSI lumens, delivering one of the best pictures available in consumer home theater today.

- High Contrast Ratio 2500:1 (in High Contrast Mode) enhances the XV-Z2000's ability to discern fine, detailed differences between the darkest and lightest colors and provides superior black level reproduction.
- 1200 ANSI Lumens (in High Brightness Mode) is a high ANSI lumens rating that delivers a bright, beautiful picture.
- Native 720p High Definition Capability (compatible with 1080i and 720p HD signals).
- Display method: DLP™ 0.8" HD2+ from Texas Instruments.



- 1.5x Powered Zoom and Focus simplifies adjustments without the need for changing the mounting position.
- Powered Optical Iris System - (High Contrast Mode/High Brightness Mode) instantly changes brightness and contrast settings with the push of a button. This allows the greatest flexibility for varying home theater environments.
- DVI-I with High-bandwidth Digital Content Protection (HDCP) Terminal ensures compatibility with the new generation of high definition set-top boxes.
- Home Theater Conveniences include easy installation and whisper quiet operation.

XV-Z2000

HDTV Compatible	Yes, 1080i (in Intelligent Compression), 720p, 480i/p
Aspect Ratio	4:3/16:9
Resolution	1280 x 720
Brightness	1200 ANSI Lumens (in High Brightness Mode)
Contrast Ratio	2500:1 (in High Contrast Mode)
Maximum Screen Size	300" (Diagonally Measured Using 16:9 Aspect Ratio)
Projection Distance	100" Screen Throw Distance 8'5"-13'1"
Display Method	DLP™ 0.8" HD2+ from Texas Instruments
Inputs	2 Component (Y, Pb, Pr) 1 Composite Video (RCA) 1 S-Video (4-Pin DIN) 1 DVI-I/HDPC (Component and Digital/Analog RGB) 1 RS-232C Serial Port (9-Pin D-Sub)
Anamorphic DVD Capable	Yes
Computer Compatibility	XGA, Mac® 19" (in Intelligent Compression) SVGA, VGA, VESA, Mac® 16"/13"
Video System	NTSC/NTSC4.43/PAL/PAL (60Hz)/PAL-M/PAL-N/SECAM
Lens Type	1-1.5x Power Zoom and Focus
Projection Lamp Type/Life	275W SHP/up to 3,000 Hours
Gamma Correction	Yes
2-D Digital Keystone Correction	Yes
Color Temperature Adjustment	Yes
Detachable AC Cord	Yes
Optional Ceiling Bracket	AN-CM270
Wireless Glow Remote Control	Yes
Optional Digital Decoder Required	Yes (for HDTV)
Built-in Audio	None
Power Source	100-240V AC, 50/60Hz (Multi-Voltage)
Power Consumption	360W (6W Standby)
Dimensions (w x h x d)	12 7/32" x 3 33/64" x 11 7/64" (Main Body Only) 12 7/32" x 4 7/64" x 11 5/16" (Including Terminal Cover)
Weight	9.3 lbs.
UPC	074000364301

SHARP VISION®

Design and specifications subject to change with notice.
Limited Warranty: 1-year parts and labor.
Sharp and SharpVision are registered trademarks of Sharp Corporation.

Mac® is a trademark of Apple® Computer, Inc., registered in the U.S. and other countries.



DLP™, the DLP™ logo and the DLP™ medallion are trademarks of Texas Instruments.

SHARP®

Sharp Electronics Corporation
Consumer Electronics Group
Sharp Plaza, Mahwah, NJ 07430-2135
1-877-388-SHARP
www.sharppusa.com
©2004 Sharp Electronics Corporation
FP-02-104/08-04