

SHARP VISION



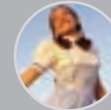
## XV-Z12000 HOME THEATER PROJECTOR

This high definition DLP™ projector represents the pinnacle in home theater.

Utilizing the DLP™ HD2+ chip from Texas Instruments and Sharp's advanced proprietary Computer Video & Integrated Composer (CV-IC) System II technology, the XV-Z12000 boasts a 5500:1 contrast ratio and a high brightness 900 ANSI lumens rating, delivering one of the best pictures available in consumer home theater today.



- High Contrast Ratio 5500:1 (in High Contrast Mode) enhances the XV-Z12000's ability to discern fine, detailed differences between the darkest and lightest colors and provides superior black level reproduction.
- 900 ANSI Lumens (in High Brightness Mode) is an ANSI lumens rating that delivers a bright, beautiful picture.
- Native 720p High Definition Capability (compatible with 1080i and 720p HD signals).
- 7 Segment 5x-Speed ND (Neutral Density) Color Wheel achieves flicker-free, high-grade images and accurate color reproduction.



- CV-IC System II - Sharp's proprietary 2nd generation advanced video scaler circuitry up-converts standard definition signals to the native 720p HD resolution of the projector (1280 x 720).
- Powered Iris Switchover Function - (High Contrast Mode/Middle Mode/High Brightness Mode) instantly changes multiple brightness and contrast settings with the touch of a button. This allows the greatest flexibility for varying home theater environments.
- Manual Optical Lens Shift simplifies installation adjustments without the need for changing the projector mount.
- DVI-I with High-bandwidth Digital Content Protection (HDCP) Terminal ensures compatibility with the new generation of high definition set-top boxes.
- Home Theater Conveniences include easy installation and 33 dB whisper quiet operation (using the Power Save mode).

# XV-Z12000

HDTV Compatible	1080i (in Advanced Intelligent Compression), 720p, 480i/p
Aspect Ratio	4:3/16:9
Resolution	1280 x 720
Brightness	900 ANSI Lumens (in High Brightness Mode)
Contrast Ratio	5500:1 (in High Contrast Mode)
Maximum Screen Size	300" (Diagonally Measured Using 16:9 Aspect Ratio)
Projection Distance	100" Screen Throw Distance 14'3" - 17'2"
Display Method	DLP™ 0.8" HD2+ from Texas Instruments
Inputs	2 Component/RGB (5 RCA) 1 Composite Video (RCA) 1 S-Video (4-Pin DIN) 1 DVI-I/HDPCP (Component and Digital/Analog RGB) 1 Wired Remote Control (3.5mm Mini Jack) 1 RS-232C Serial Port (9-Pin D-Sub)
Anamorphic DVD Capable	Yes
3D Y/C Digital Comb Filter	Yes
Manual Optical Lens Shift	Yes, 1 Full Screen Height
Film Mode	Yes, 24 Hz Progressive Format
Computer Compatibility	SXGA, XGA, Mac® 21"/19" (in Advanced Intelligent Compression), SVGA, VGA, VESA, Mac® 16"/13"
Video System	NTSC/NTSC4.43/PAL/PAL (60Hz)/PAL-M/PAL-N/SECAM
Lens Type	1-1.35x Manual Zoom and Focus
Projection Lamp Type/Life	270W SHP/up to 2000 Hours
Fan Noise	33 dB (in Eco Mode)
Gamma Correction	Yes
2-D Digital Keystone Correction	Yes
Color Temperature Adjustment	Yes
Detachable AC Cord	Yes
Optional Ceiling Bracket	AN-CM250
Wireless Light-Up Remote Control	Yes
Optional Digital Decoder Required	Yes (for HDTV)
Built-in Audio	None
Power Source	100-240V AC, 50/60Hz (Multi-Voltage)
Power Consumption	365W (0.1W in Standby)
Dimensions (w x h x d)	18 11/16" x 7" x 16" (Main Body Only) 18 11/16" x 7" x 19 1/2" (Including Terminal Cover)
Weight	20.7 lbs.
UPC	074000364028

# SHARP VISION®

Design and specifications subject to change with notice.  
Limited Warranty: 1-year parts and labor.  
Sharp and SharpVision are registered trademarks of Sharp Corporation.

Mac® is a trademark of Apple® Computer, Inc., registered in the U.S. and other countries.



DLP™, the DLP™ logo and the DLP™ medallion are trademarks of Texas Instruments.

# SHARP®

Sharp Electronics Corporation  
Consumer Electronics Group  
Sharp Plaza, Mahwah, NJ 07430-2135  
1-877-388-SHARP  
www.sharpusa.com  
©2004 Sharp Electronics Corporation  
FP-02-101/08-04