

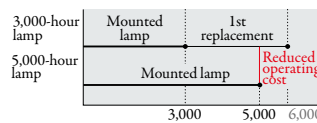
Clear, Smooth Communication
High Brightness 3800lm

Ecological & Cost-efficient

Long 5,000hr*¹ Lamp Life

By increasing the estimated lamp life, we've added the advantages of lower maintenance and reduced operating cost.

■ Lamp Replacement Frequency*²



*¹ When used in low lamp mode. Maximum lamp life in standard mode use is 3,000 hours.

*² Lamp life specification is an estimate based on verification under proper conditions and is not the duration of the warranty. Lamp will shut-off automatically when usage reaches the specified estimated maximum lamp hours. Service life may vary widely depending on usage and operating environment and conditions, as well as users' adherence to the maintenance and cleaning procedures provided in the user manual.

Exceptionally Quiet

Silent 25dB Operation (in low mode)

High brightness is commonly accompanied by louder fan operation noise; but not so for the XD590U. Utilizing unique design technologies, the XD590U provides bright 3800lm image projection while operating at an impressively quiet 25dB.

NEW XD590U



Stand-by Mode under 1W*¹

Stand-by (low) mode power consumption is less than 1W, offering increased energy savings and further contributing to environmental preservation.

*¹ Stand-by mode with network turned off, 3W in normal mode with network turned on.

Filter-free

DLP™ projectors are structurally airtight, eliminating the need for an intake filter, contributing further to cost efficiency.



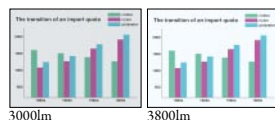
MOBILE XGA PROJECTOR **XD590U**

Brilliant Color™	Color Enhancer	Wall Screen	10W Speaker	User Logo Projection	Password Lock	Instant Shutdown	Picture Performance
Long-life Lamp	Low Stand-by Power	Top/Side Loading Lamp	LAN (RJ-45)	HDMI	Closed Caption	Low Fan Noise	
							User-friendly

Other Special Features

High brightness 3800lm and high contrast 2000:1

A high brightness and a high contrast level for presentations in large meeting rooms and conference halls.



High-power projection – Distance increased 1.5x

The XD590U is equipped with a specially calibrated lens for high-power projection. Projection distances from 1.7 to 2.6m (68in to 102in) are possible using a 60-inch screen, and brilliant, crystal-clear images are assured even when projection distance is short.

Top-loading lamp for easier maintenance

The projection lamp is installed in the upper section of the main body. Whether sitting on a shelf or suspended from the ceiling, lamp replacement is simple and easy*, and there's never a need to move the whole projector.

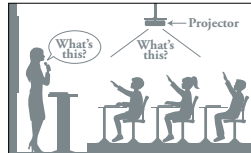


*A lamp replacement attachment is included to prevent the lamp from being dropped during replacement.

Loud 10W built-in speaker

A high-volume, 10W speaker is built-in, eliminating the need for an external speaker.

Loud 10W built-in speaker + Audio Mix



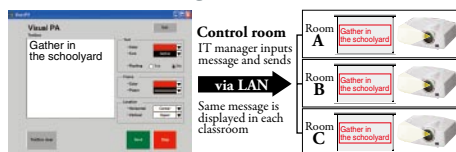
Microphone capability with mixing input audio source

Using the "Audio Mix" feature and wireless microphone sold separately, the presenter's voice is reproduced loud and clear in real-time.

*Only compatible with stereo mini-jack. Not compatible with RCA jack (L/R) or HDMI.

Visual PA broadcasting of various written messages

Using a control room computer equipped with projector-control software, simultaneously send messages (up to 350 characters long) in real-time to projectors connected to the LAN. Ideal for broadcasting important information to multiple rooms in schools or office buildings.



3D READY – Enjoy the future today

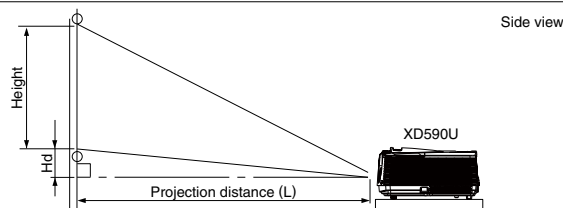
Experience the impact and allure of 3D images. The 3D video content must be in field sequential format and special electronic shutter glasses are required.

- Varies depended on condition.
- All brand names and product names are trademarks, registered trademarks or trade names of their respective holders.
- Lamp life specification is an estimate based on verification under proper conditions and is not the duration of the warranty. Lamp will shut-off automatically when usage reaches the specified estimated maximum lamp hours. Service life may vary widely depending on usage and operating environment and conditions, as well as users' adherence to the maintenance and cleaning procedures provided in the user manual.
- HDMI, the HDMI Logo, and High-Definition Multimedia Interface are trademarks or registered trademarks of HDMI Licensing LLC in the United States and other countries.*

Specifications

Model	XD590U
Display technology	0.7" 1-chip DMD
Resolution	1024 x 768 (total 786,432 pixels)
Brightness	3800lm
Contrast ratio	2000 : 1
Picture size	40" - 300"
Throw ratio	1.4 - 2.1
Source lamp	190W (shut-off time 5000hr) in low mode, 230W (shut-off time 3000hr) in standard mode
PC compatibility	640 x 480 - 1280 x 1024, True : 1024 x 768, sync on green available
Video compatibility	NTSC / NTSC 4.43 / PAL (including PAL-M, N) / SECAM / PAL-60 Component video; 480i/p (525i/p), 576i/p (625i/p), 720p (750p), 1080i (1125i 60Hz), 1080i (1125i 50Hz)
Input terminals	RGB; mini D-sub 15pin x 2 Video; RCA x 1, S-VIDEO x 1 Digital; HDMI x 1 Audio; stereo mini jack (ø3.5mm) x 2, RCA jack (L/R) x 1
Output terminals	RGB; mini D-sub 15pin x 1 Audio; stereo mini jack (ø3.5mm) x 1
Communication terminal	Serial; mini DIN 8pin x 1 (RS-232C), LAN; RJ-45 x 1
Audio speaker	10W mono
Dimensions (W x H x D)	345 x 129 x 270 mm / 13.6 x 5.1 x 10.6 inch
Weight	3.7kg / 8.0lbs
Power requirements	AC 100-240V, 50/60Hz
Optional lamp	VLT-XD590LP

Screen Size and Projection Distance

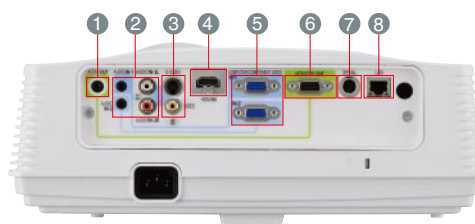


Screen size chart (4:3 aspect ratio)

Screen		Distance from screen (L)				Height projected image (Hd)					
Diagonal size	Width (W)	Height (H)	Shortest (Wide)	Longest (Tele)	inch	cm					
40	102	32	81	24	61	45	1.1	67	1.7	3.6	9
60	152	48	122	36	91	68	1.7	102	2.6	5.4	14
80	203	64	163	48	122	91	2.3	137	3.5	7.2	18
100	254	80	203	60	152	115	2.9	171	4.3	9.0	23
150	381	120	305	90	229	173	4.4	258	6.5	13.5	34
200	508	160	406	120	305	231	5.9	344	8.7	18.0	46
250	635	200	508	150	381	289	7.3	431	10.9	22.5	57
300	762	240	610	180	457	348	8.8	517	13.1	27.0	69

The above numbers are approximate, and may be slightly different from the actual measurements.

Input and Output Terminals



- 1 Audio output
- 2 Audio input
- 3 S-Video/Video
- 4 HDMI
- 5 PC/Component video input
- 6 Monitor output
- 7 Serial RS-232C
- 8 LAN (RJ-45)

To find out more about XD590U and our projectors, visit us at

MITSUBISHI ELECTRIC EUROPE (BENELUX Office)

Nijverheidsweg 23A, 3641 RP Mijdrecht - The Netherlands
Tel: +31 (0)297-282461 Fax: +31 (0)297-283936 - www.MitsubishiElectric.nl