

MULTI PURPOSE LCD PROJECTORS

INNOVATE
The Future of Projection

- ▶ CP-X4011N ▶ CP-X3020
- ▶ CP-X3011N ▶ CP-WX3011N
- ▶ CP-X2520 ▶ CP-X2511N
- ▶ CP-RX79



HITACHI
Inspire the Next

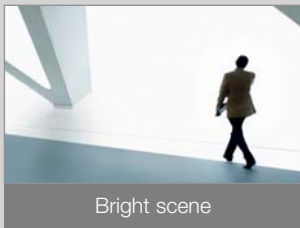
Cutting-edge projection for all

At the heart of the Hitachi philosophy is innovation. Our new Multi Purpose projector range brings together the finest features for business and education. Whichever model you choose, you'll find top-of-the range picture quality, security and networking, in a user-friendly package. Hitachi is dedicated to lowering costs and protecting the environment, so the range also features longer-life parts and energy-saving settings.

► Outstanding picture quality

Exceptional contrast

Hitachi's networkable models feature a 2000:1 contrast ratio which you'd expect from high-end projectors. In addition these models also benefit from our Active Iris technology. This automatically ensures optimal image contrast and depth perspective during both bright and dark scenes – for the brightest whites, blackest blacks and boldest colours.



Bright scene



Dark scene

High picture quality

In this projector range, Hitachi brings together a variety of innovative features for superior picture quality. Motion Adaptive Progressive Scan reduces line flicker, boosting resolution and smoothing moving images. Noise Reduction boosts clarity. And Hitachi's unique Equalising Gamma Function helps you customise gamma and colour balance to suit your personal picture preferences.

Blackboard and Whiteboard Modes

Projecting onto coloured backgrounds can make images appear dull – whilst shiny backgrounds can make them uncomfortably bright. With our Blackboard and Whiteboard modes, you can ensure optimal brightness whether the screen is black, green or shiny white.



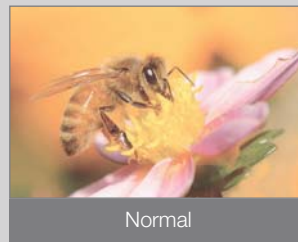
Normal



Whiteboard Mode

Daytime Mode

It can be harder to see a projected picture when the sun is shining brightly. Using Daytime Mode, projections are always vivid and colourful in a bright environment.



Normal



Daytime Mode

► Virtually maintenance-free



Hitachi projectors are stylish, practical and cutting-edge – but we also work hard to ensure they are as green as possible at every

stage of their lifecycle. That's why the 1W Standby Mode is an important new feature on all Hitachi projectors.

A new European Directive may soon limit the power consumption of projectors in standby to 1W or less. But at Hitachi, we're one step ahead. As part of our Environmental Vision, we've already ensured that all the projectors have this power-saving feature. So from 2010, you'll save energy even if you need to leave your projector in Standby Mode.

This is one of many steps Hitachi is taking to help minimise our impact on the environment.

Hitachi's projectors use components which help in the overall reduction of their carbon footprint.



Super Hybrid Filter

The new Hitachi Super Hybrid Filter is the best you'll find on the market. It lasts an exceptional 6000 hours* – to make maintenance less frequent and reduce replacement costs.



Long lamp life

Now you can benefit from longer lamp life than ever before. Using the new Eco Mode, lamp life is extended to more than 6000 hours* – equivalent to the projector being used for three hours a day over a period of ten years.



Long filter life

A Hitachi filter should last as long as the projector lamp. And because replacement lamps come with a new filter, you can simply replace both at the same time, making it unnecessary to clean the filter.

Usability

Template function

This unique Hitachi feature allows you to project lines, grids and maps onto a whiteboard, blackboard or flip chart, to make writing and drawing easier.



Audio Pass Through

Audio Pass through allows the user to listen to external speakers via the projectors audio output whilst in standby mode, so you experience audio without images. This feature preserves the lamp life when you only need sound.



My Button

This customisable feature allows the user to assign a designated or frequently used function from the menu to this button. In addition the green button on the top of CP-X2520 and CP-X3020 clears the screen instantly.



Multi PC Mode

The Multi PC Mode is perfect for use in meetings and the classroom as it allows up to four people to project their PC screens at the same time via a network. (Network models only)



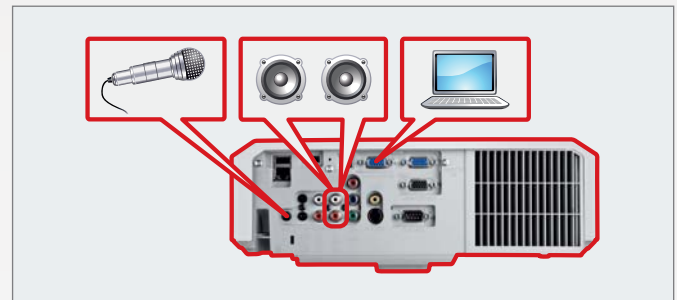
New OSD (On Screen Display) Menu and Input Source Naming

The new intuitive icons featured in the On Screen Display clearly identify the different functions and settings enabling easy navigation and installation. In addition, input Sources can be personalised so that they are easier to understand and identify – for instance, 'S-Video' can become 'DVD player'.



Microphone input and amplifier

The two 8 watt speakers and microphone system found on the CP-X2511N, CP-X3011N, CP-WX3011N and the CP-X4011N provide the user with a convenient audio solution.



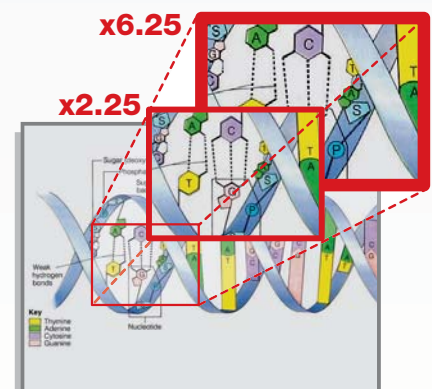
PC-Less Presentation

Start your presentations smoothly and quickly with Hitachi's PC-Less presentation mode. Simply insert a USB storage device and present, without the need for a PC. You can also select which slide or image to display from a list of thumbnails.



Zoom function

The new zoom function allows the user to select which area of their image they wish to enlarge. Great for teachers who wish to explain a particular part of a diagram in detail. (Applicable to CP-RX79, CP-X2520, CP-X3020)



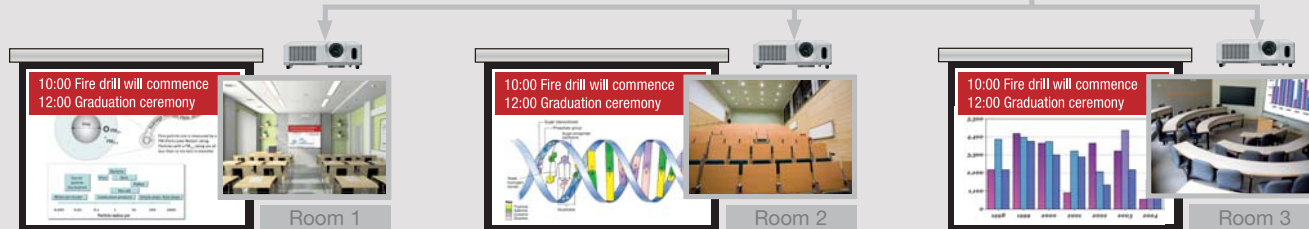
Advanced network functions (CP-X2511N, CP-X3011N, CP-WX3011N and CP-X4011N)

Messenger function

This clever function lets you send text to multiple, networked projectors instantly or at a specified time. This is ideal for projecting daily work schedules, university campus notifications, school activities or any information that needs to go out over a large area – fast.



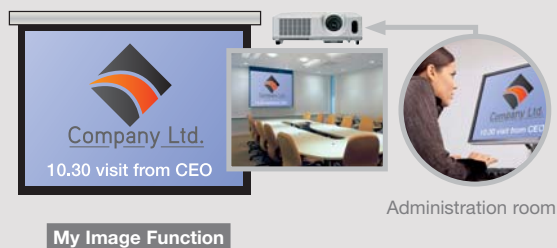
Administration room



Convenient networking functions

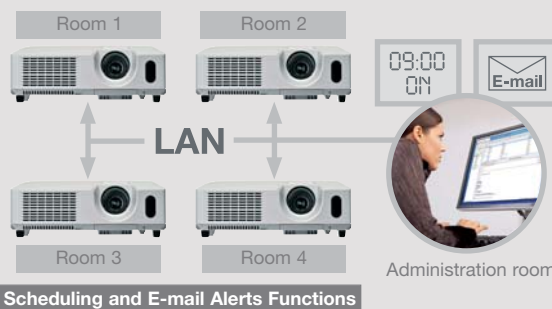
Now you can manage and control multiple projectors over your LAN. The projector can monitor and diagnose its own status, as well as that of other network applications. You can also schedule

the projector to turn on and off automatically. And all of this functionality can be easily accessed via a web browser.



My Image Function

Administration room



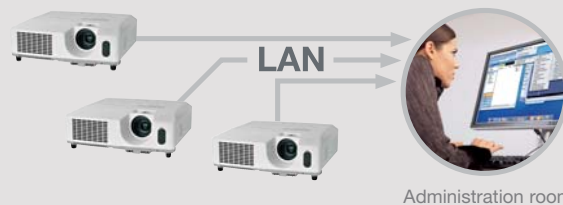
Scheduling and E-mail Alerts Functions

Administration room

Centralised reporting functions

Using a single PC, you can create detailed reports for all your networked projectors. This can make maintenance simpler – for example, by revealing any projector that isn't working or any projectors that are due for maintenance.

Projector Name	Model	Connection	IP-Addr
Room001	ES-D106	192.168.1.101-25	00-00-07-16
Room002	ES-M06	192.168.1.102-25	00-00-07-16
Room003	ES-D106	192.168.1.103-25	00-00-07-16
Room004	ES-D106	192.168.1.104-25	00-00-07-16
Room005	ES-M06	192.168.1.105-25	00-00-07-16
Room006	ES-M06	192.168.1.106-25	00-00-07-16
Room007	ES-M06	192.168.1.107-25	00-00-07-16
Room008	ES-M06	192.168.1.108-25	00-00-07-16
Room009	ES-M06	192.168.1.109-25	00-00-07-16
Room010	ES-M06	192.168.1.110-25	00-00-07-16
Room011	ES-M06	192.168.1.111-25	00-00-07-16
Room012	ES-M06	192.168.1.112-25	00-00-07-16
Room013	ES-M06	192.168.1.113-25	00-00-07-16
Room014	ES-M06	192.168.1.114-25	00-00-07-16
Room015	ES-M06	192.168.1.115-25	00-00-07-16
Room016	ES-M06	192.168.1.116-25	00-00-07-16
Room017	ES-M06	192.168.1.117-25	00-00-07-16
Room018	ES-M06	192.168.1.118-25	00-00-07-16
Room019	ES-M06	192.168.1.119-25	00-00-07-16
Room020	ES-M06	192.168.1.120-25	00-00-07-16



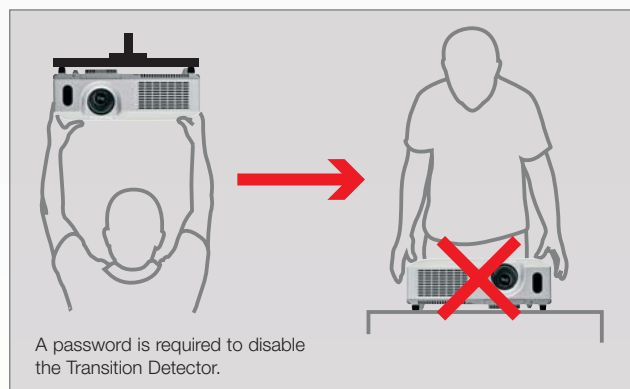
Administration room

Security

Transition Detector

Hitachi's range of Multi Purpose projectors are equipped with comprehensive security features to help protect your projector at all times.

If the projector is removed from its installed location, it triggers Hitachi's unique Transition Detector. This renders the projector inoperative unless a password is entered.



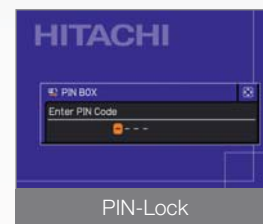
A password is required to disable the Transition Detector.

PIN-Lock

The PIN-Lock ensures only authorised people can use the projector by entering their unique PIN code. This screen can be branded to your company or educational establishment using the MyScreen function.



MyScreen PIN-Lock



PIN-Lock



Security bar

Projectors are equipped with a security bar allowing a chain to be attached for physical security.



MULTI PURPOSE

TECHNICAL SPECIFICATIONS

Table with 8 columns (Model, CP-X2511N, CP-X3011N, CP-WX3011N, CP-X4011N, CP-RX79, CP-X2520, CP-X3020) and rows for Optical, Compatibility, Features, Connections, Power, Physical, Miscellaneous, Accessories Supplied, and Warranty.

Connectivity

You can connect the Multi Purpose range of projectors to a variety of devices, to support all your projection needs. From DVD players, monitors and PCs, to the Local Area Network and a simple mouse connection, Hitachi has done everything possible to create the most flexible user experience.

Diagram showing connectivity options for CP-X2511N, CP-X3011N, CP-WX3011N, CP-X4011N, CP-X2520, CP-X3020, and CP-RX79. Includes labels for USB Type B, HDMI, LAN, Security bar, Microphone, Kensington slot, Audio In/Out, Control, Composite Video, S-Video, Component RCA, and Computer In/Out.

*The stated lamp life refers to the average life expected in ideal operating conditions with usage in accordance with the manual. The majority of, but not all lamps should achieve this figure. **Where a lamp fails within warranty and a replacement lamp is taken, the warranty for the replacement lamp will be a maximum of 6 months (dependent on warranty hours stated). The "HD ready" Logo is a trademark of ECTA. HDMI, the HDMI logo and High-Definition Multimedia Interface are trademarks or registered trademarks of HDMI Licensing LLC. The specification above and photography is for reference only and may be subject to change.

HITACHI DIGITAL MEDIA
Hitachi Europe Ltd, Whitebrook Park, Lower Cookham Road, Maidenhead, Berkshire SL6 8YA UNITED KINGDOM
Tel: +44 (0)1628 585 000 Fax: +44 (0)1628 585 500
www.hitachidigitalmedia.com

