

High Brightness / Image Quality / Reliability

XG-P610X [XGA - 1024 x 768] / XG-P560W [WXGA - 1280 x 800]

** Also available: XG-P610X-N and XG-P560W-N (same as above, without lens)*



THE NEW SHARP XG-P610X (6000 ANSI LUMENS, XGA) AND XG-P560W (5200 ANSI LUMENS, WXGA) REPRESENT A PRICE / PERFORMANCE BREAKTHROUGH IN 3-CHIP DLP® FRONT PROJECTORS

Designed for integrated systems including conference rooms and boardrooms, lecture halls, houses of worship, training facilities, control rooms, rental/staging and other large venue installations, these 3-Chip DLP projectors offer unparalleled picture quality, brightness and feature set at an exceptionally competitive price point.

Key Features:

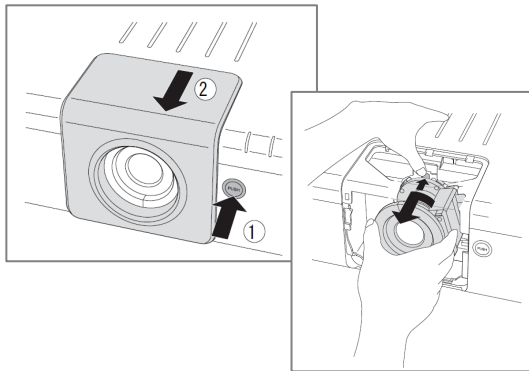
- **3-Chip DLP for highest color accuracy and reliability.**
- **6000 ANSI Lumens / XGA Native Resolution (XG-P610X)**
- **5200 ANSI Lumens / WXGA Native Resolution (XG-P560W)** – offers compatibility with standard XGA and 720p HDTV, as well as “pixel perfect” 1280 x 800 resolution from the newest generation WXGA PCs
- **Intelligent Dual Lamp System** for high brightness, image uniformity, and “redundant” lamp reliability
- **Motorized Horizontal and Vertical Lens Shift**
- **Seven Lens Options** with Quick Lens Replacement
- **RJ-45 LAN Connectivity** for remote access & control
- **Back-Lit Remote Control:** Wireless and Wired Capability
- **Optional Wireless Mouse Receiver** (AN-MR2)
- **Other Key Features Similar to Sharp XG-PH70X**

Primary Specifications:

- **Device (3-Chip DLP):** 0.7” XGA (P610X) / 0.65” WXGA (P560W)
- **Contrast Ratio:** 1800:1 (Native contrast)
- **Lamp:** Dual 280W User-Replaceable lamps (L/R common)
- **Lens Shift Range (Motorized):** H: +/-35%, V: +/-55% (XG-P610X); H: +/-35%, V: +/-66% (XG-P560W). [Adjustable range has limitations depending on lens]
- **Lens: Motorized Zoom**
- **Standard Lens Included with XG-P610X and XG-P560W:** AN-P18EZ (1:1.8-2.25). Both models also available without lens (for use with one of Sharp’s optional special application lenses)
- **Scaler IC:** Sharp CV-IC 2. Offers RGB compatibility up through UXGA (1600 x 1200) as well as DTV/HDTV (up through 1080p)
- **Input/Output Terminals:** same as Sharp XG-PH50X/PH70X series, plus HDMI. (Dedicated analog audio inputs- except HDMI)
- **Weight:** XG-P610X: 57.4 lbs. (54.1 lbs without lens); XG-P560W: 58.5 lbs. (55.2 lbs. Without lens).
- **Dimensions:** 19.7” (W) x 25.1” (L) x 7.5” (H)

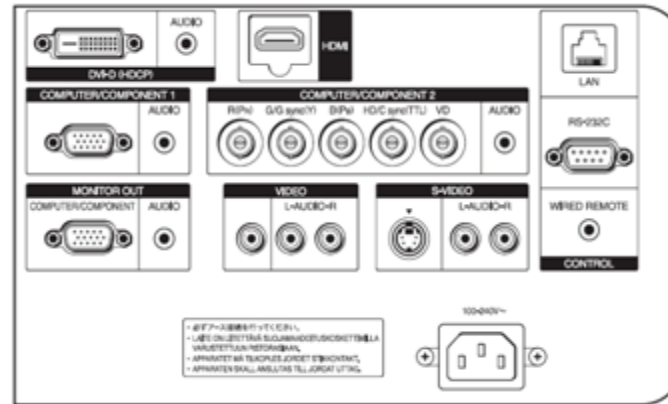
Quick Lens Replacement

- Requires no special tool

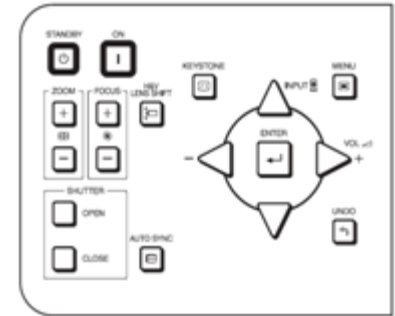


Wide Range of Input/Output Terminals

* HDMI and dedicated audio input are added (compared to current model XG-PH70X)



Large Controls for Easy Operation



Seven Lens Options:

Lens Model / Type	AN-P8EX Fixed Wide	AN-P12EX Fixed Wide	AN-P15EZ Wide Zoom	AN-P18EZ Standard Zoom	AN-P23EZ Tele Zoom	AN-P30EZ Tele Zoom	AN-P45EZ Tele Zoom
Focus	Power	Power	Power	Power	Power	Power	Power
Zoom	Fixed	Fixed	Power (1/1.2)	Power (1/1.2)	Power (1/1.3)	Power (1/1.5)	Power (1/1.5)
Picture Size (diagonal)	80-150" (P610X) 80-140" (P560W)	60-250" (P610X) 60-230" (P560W)	60-250" (P610X) 60-230" (P560W)	60-300" (P610X) 60-280" (P560W)	60-250" (P610X) 60-230" (P560W)	60-250" (P610X) 60-230" (P560W)	60-250" (P610X) 60-230" (P560W)
Focal Length	11.6 mm	17.1 mm	21.2 – 25.8 mm	25.5 – 32 mm	31.9 – 42.5 mm	40.8 – 62.8 mm	62.1 – 97.8 mm
F No.	2.5	2.5	2.5	2.5	2.5	2.5	2.5
Throw Ratio	1:0.8	1:1.2	1:1.5 – 1.8	1:1.8 – 2.25	1:2.25 – 3.00	1:3.0 – 4.5	1:4.5 – 7.0
100" diagonal Throw Distance	1.6m (P610X) 1.7m (P560W)	2.4m (P610X) 2.6m (P560W)	3.0-3.7m (P610X) 3.3-3.9m (P560W)	3.7-4.6m (P610X) 3.9-4.9 (P560W)	4.6-6.1m (P610X) 4.9-6.5m (P560W)	6.1-9.1m (P610X) 6.5-9.8m (P560W)	9.1-14.2m (P610X) 9.8-15.3m (P560W)
Vertical Shift Range	-18% to +18% (P610X) -22% to +22% (P560W)			-55% to +55% (P610X) -66% to +66% (P560W)			
Horizontal Shift Range	-11% to +11% (P610X) -11% to +11% (P560W)			-35% to +35% (P610X) -35% to +35% (P560W)			
Comparable Lens for Sharp XG-PH70X / XG-PH50X Series	AN-PH10EX	New	AN-PH20EZ	AN-PH30EZ / AN-PH31EZ	AN-PH40EZ	AN-PH50EZ	AN-PH60EZ

Sharp and related trademarks are trademarks or registered trademarks of Sharp Corporation and/or its affiliated entities. DLP and the DLP medallion are registered trademarks of Texas Instruments. All other trademarks are the property of their respective owners. All product specifications, features and design are subject to change without notice. © 2008 Sharp Electronics Corporation. All rights reserved.

SHARP ELECTRONICS CORPORATION
Professional Display Division
Sharp Plaza, Mahwah, NJ 07430
1-866-4-VISUAL; www.SharpUSA.com/3ChipDLP

