








## DS316 DLP® Projector

# Ultimate Big Screen Viewing Experience

-  Bright projection  
– 2500 ANSI Lumens
-  SVGA resolution, 2500:1 contrast ratio for sharp, detailed presentations and graphics
-  Easy to use with games consoles, DVD players, digital satellite/TV boxes & PCs/laptops
-  BrilliantColor™ technology  
– vibrant life-like colours
-  Energy saving – <1W standby mode
-  Low ownership costs  
– up to 4000hrs lamp life
-  DLP® filter-free design  
– Virtually no maintenance



## Big Screen Viewing

Perfect for use with interactive whiteboards at school, delivering an important presentation at work, or watching a movie on the big screen at home, the Optoma DS316 will exceed your expectations.

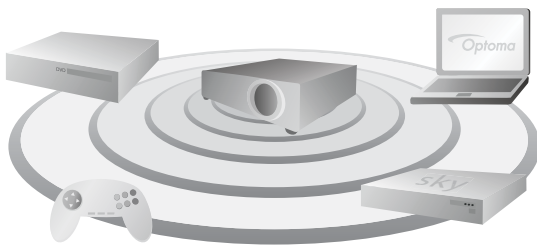
Impressive 2500 ANSI Lumens from a small, sleek and stylish design, the DS316 will attract attention for all the right reasons.

The environmentally friendly DS316 has energy saving features including <1W standby mode. Long lamp-life of 4000hrs combined with our unique Optoma Colour and Imager guarantees saves you both time and money while ensuring hassle-free, long lasting projection.

### HOOK IT UP TO ANYTHING!

Easy to use with most of your home devices; simply connect, power up and project.

You can even create a genuine movie experience anywhere. Change the aspect ratio of the screen from 4:3 format to 16:9 – just like a real cinema.

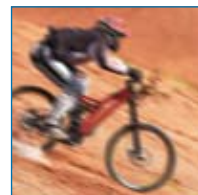


### SMOOTH, SEAMLESS PROJECTION

Even in the fastest moving scenes, the DS316 will project a smooth and seamless image. The rapid response of DLP® technology ensures that the projected movie or video game remains perfect and precise.



With



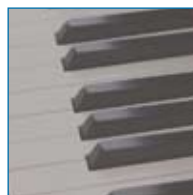
Without

### CLEAR, FOCUSED IMAGES

High contrast ratio 2500:1, achieved with DLP® technology for a stunning viewing experience. Crisper whites, ultra-rich blacks for images that come alive on screen, making it ideal for unforgettable presentations or movies.



With



Without



Lightweight projector gives a clear, bright projection

## AMAZING COLOURS

The DS316 incorporates BrilliantColor™ technology to produce stunningly bright images with perfectly balanced life-like colours.

### COLOUR PERFORMANCE

**Optoma guarantees colour quality will remain as new for 5 years\***

Once you've purchased the DS316, Optoma guarantees that the colours will not fade and the image performance will not degrade for a minimum of 5 years.



### MAINTENANCE FREE = LOWER TOTAL COST OF OWNERSHIP (TCO)

DLP® technology ensures lower cost of ownership, longer life and improved reliability compared to other technologies.

Filter-free projector design means no more regular filter cleaning or replacements, saving you time and money.

## FEATURES

- 6 preset picture modes
- Classroom mode - 1500 ANSI Lumens
- Quick keystone correction
- Security bar and password protection for added security
- Easy to use remote with direct source control

## TIME AND ENERGY SAVINGS

The DS316 incorporates energy saving features to conserve power and extend the lamp life:



The timer control functions can automatically switch the projector off to standby mode <math>< 1W</math>, conserving power and extending the lamp life to an astonishing 4000 hours\*\*.



It takes less than 10 seconds for the projector to power up and shutdown, so the DS316 not only saves time but energy too.

## IMPROVED SECURITY

Easy to secure with the inclusion of a tough security bar, Kensington™ Lock, keypad lock and password protection.



Enjoy big colourful presentations or movies day or night

## DS316 SPECIFICATIONS

Native Resolution	SVGA 800 x 600
Compressed Resolution	UXGA (1600 x 1200)
Brightness - BRIGHT mode	2500 ANSI Lumens
Contrast	2500:1
Noise Level	28dB
Lamp Life**	4000/3000 (STD/BRIGHT mode)
Projection Lens	F/2.41~2.55; f=21.8~24mm, 1.1x Manual Zoom
Throw Ratio	1.95 - 2.15:1 (Projection Distance:Image Width)
Projection Distance	1.2 - 12m
Image Size	0.70 - 7.70m (27.49" - 303.12") Diagonal 4:3
Display Technology	Single 0.55" SVGA DC3 DMD chip DLP® Technology by Texas Instruments
Weight / Dimensions (W x D x H)	2.3 kg / 286 x 192 x 84mm
Remote Control	Full function remote with direct source selecting
INPUTS	15 Pin D-Sub VGA (SCART & Component via adaptor) S-Video 4 Pin Mini Din Composite RCA 3.5mm Audio Mini Jack
CONTROL	RS232 - 3 Pin D-sub
OUTPUT	15 Pin D-Sub VGA Stereo Audio Mini Jack
Audio	2W Speaker
Aspect Ratio	4:3 Native, 16:9 Compatible
Keystone Correction	± 40° Vertical
On Screen Display	18 Languages: English, German, French, Italian, Spanish, Portuguese, Polish, Dutch, Russian, Finnish, Swedish, Greek, Norwegian, Danish, Hungarian, Czech, Turkish & Arabic
Video Compatibility	PAL SECAM 576i/p, NTSC 480i/p, HD 720p/1080i/1080p
Uniformity	85%
Displayable Colours	1.07 Billion
Horizontal Scan Rate	15.3 - 91.1kHz
Vertical Scan Rate	24 - 85Hz
Power Supply	100 - 240V, 50 - 60Hz
Power Consumption	233W BRIGHT mode < 1W Standby mode 207W STD mode < 1W Standby mode
Operating Conditions	Operating: 5 - 40°C, 85% Humidity (Max), 3000m Altitude (Max)
Security	Security Bar, Kensington Lock Port, Password Protection
Standard Accessories	Lens Cover, AC Power Cord, VGA Cable, Full Function Remote, Batteries x 2, Quick Start Guide, User Manual CD, Warranty Card, WEEE Card
RoHS	Compliant
Lamp Warranty	6 months or 1000 hours - whichever comes sooner
Warranty	Warranty may vary by country. Please see <a href="http://www.optomaeurope.com">www.optomaeurope.com</a> or ask your local supplier for details
Colour Guarantee*	5 Years
Imager Guarantee***	5 Years

## EASY TO USE REMOTE CONTROL

### DS316 Remote Control

- 1 Vertical Keystone Correction
- 2 Volume Control
- 3 Brightness Adjustment
- 4 Contrast Adjustment
- 5 AV Mute
- 6 Direct Input Source Selection



### DS316 Connections

- 7 VGA - SCART & Component
- 8 S-Video
- 9 Video
- 10 RS232 - 3 Pin
- 11 VGA Out
- 12 Audio Out
- 13 Audio In
- 14 Kensington™ Lock
- 15 Security Bar

## Exceptional Connectivity / Multiple Terminals



Easy to use remote with buttons to change the input sources



DS316 Projection Distance 1.2 - 12m (4:3 Aspect Ratio)								
Projection Distance (m)	Max. Horizontal Image Size (m)	Min. Horizontal Image Size (m)	Max. Vertical Image Size (m)	Min. Vertical Image Size (m)	Max Diagonal Image Size (m)	Max Diagonal Image Size (inch)	Max. Image Offset (m)	
1.20	0.62	0.56	0.46	0.42	0.77	30.31	0.07	
2.00	1.03	0.93	0.77	0.70	1.28	50.52	0.12	
2.50	1.28	1.16	0.96	0.87	1.60	63.15	0.14	
3.00	1.54	1.40	1.16	1.05	1.92	75.78	0.17	
4.00	2.05	1.86	1.54	1.40	2.57	101.04	0.23	
5.00	2.56	2.33	1.93	1.75	3.21	126.30	0.29	
6.00	3.08	2.79	2.31	2.10	3.85	151.56	0.35	
7.00	3.59	3.26	2.70	2.45	4.49	176.82	0.40	
8.00	4.10	3.72	3.08	2.80	5.13	202.08	0.46	
9.00	4.62	4.19	3.47	3.15	5.77	227.34	0.52	
10.00	5.13	4.65	3.86	3.50	6.42	252.60	0.58	
11.00	5.64	5.12	4.24	3.85	7.06	277.86	0.64	
12.00	6.15	5.58	4.63	4.20	7.70	303.12	0.69	

For guide purposes only

DS316 is capable of 16:9 aspect ratio projection. When projecting a 16:9 image the image sizes, screen height and offset information will differ from the above.

**Optoma Europe Ltd.**  
42 Caxton Way, Watford Business Park, Watford, Hertfordshire, UK. WD18 8QZ  
[www.optoma.co.uk](http://www.optoma.co.uk)

**Panoview**  
Optoma recommended Screens  
[www.panoview.eu](http://www.panoview.eu)



\*Optoma guarantees that in normal use, Optoma DLP® colour quality will be indistinguishable from when new. Please note that worn lamps will give slight variance. Exclusions: (1) Guarantee is voided if the projector is subject to damage through mis-use. (2) Guarantee may be void in industrial or commercial entertainment environments where dust or smoke is particularly excessive (3) Guarantee will not apply if lamp brightness is below 50% due to wear or if the projector is not working due to other fault.  
\*\*Typical lamp life achieved through testing. Will vary according to operational use and environment conditions. \*\*\* Optoma guarantees that in normal use, the DLP® imager guarantee will retain quality for at least 5 years providing consistent pixel performance.  
Exclusions: (1) Guarantee is voided if the projector is subject to damage through mis-use. (2) Guarantee may be void in industrial or commercial entertainment environments where dust or smoke is particularly excessive.  
Copyright © 2009, Optoma Europe Ltd. All other product names and company names used herein are for identifications purposes only and may be trademarks or registered trademarks of their respective owners. Errors and omissions excepted, all specifications are subject to change without notice. DLP®, BrilliantColor™ and the DLP logo are registered trademarks of Texas Instruments.