

New Product Summary

Launch Date – 1st October 2008
Under NDA Until – 1st September 2008

Epson
EMP 1717

Lightweight, super bright, micro-portable, 802.11a wireless projector

Powered by 3LCD technology, the Epson EMP-1717 combines a lightweight, compact design with XGA resolution and an industry leading brightness of 2500 ANSI lumens. Packed with advanced features this projector is the ideal mobile presentation solution.

Perfectly projected images wherever you are

When you are on the move can you be sure the conditions will be right for your presentation?

With the Epson EMP-1717, clear and natural images are guaranteed in the lightest room, thanks to the innovative Epson E-TORL lamp technology which provides super bright images rated at 2500 ANSI lumens.

Your projected image will also be perfect in any sized room. Even in a small meeting room you will be able to project a 60" screen from a distance of only two meters.

A truly mobile solution

Weighing only 1.7kg and supplied with a compact, stylish carrying case this 3LCD projector is the perfect travel companion.

With the Epson EMP-1717, you don't even need to bring your laptop to the meeting. Just save your presentation onto a standard memory device using the supplied software, plug it straight into the USB or card slot of the projector and run your presentation. When you are on the move, peace of mind is ensured because ease-of-use and Epson's high reliability are designed in to the EMP-1717, backed up by the standard 3 year next day on site warranty.

Ready in seconds – simply plug and project

All that is needed to set up your projector is to plug it in, connect your source and within seconds you are ready to present. The projected image is instantly aligned thanks to automatic keystone correction, and the projection level can be easily adjusted using the single foot release lever. When you have finished your presentation, simply switch off and pack away. With the instant off button there's no waiting around for the projector to cool down.

The ultimate in flexibility

The Epson EMP-1717 works just as well in the office as it does on the move.

You can connect it with standard cables, with USB display, or wirelessly to your network with our Epson EasyMP technology and benefit from the most secure 802.11a/b/g wireless LAN transmission. You can even manage your mobile projector remotely over the network and connect to it via RJ45 with the optional Ethernet kit.

- **Incredibly bright and lightweight** - 2500 ANSI Lumens, only 1.7kg
- **Powerful wireless functions** - strongest wireless security, true full screen, full motion wireless video with sound, multi-screen display
- **USB display** - just connect to your laptop with a USB cable
- **No time wasting** - with quick startup, automatic vertical keystone correction and quick cool down
- **PC less presentations** - with USB memory connection
- **Flexible networking** - wireless 802.11a/b/g or optional RJ45 network connection
- **AV mute slide** - for more effective presentations
- **Peace of mind warranty** - 3 year next day on site repair or replace in the UK, 3 year next day on site repair or loan in the Republic of Ireland.



3LCD

E-TORL



lens cover / AV mute

connections and speaker



focus and zoom, indicator lights, control panel



remote control

Ordering information

Description	EMP-1717 LCD Projector
Part Number	V11H228240DA**
Barcode	8715946432274
Carton Size	360 x 290 x 195
Carton Weight	3.9kg

** The last two letters may vary depending on the version. See the RRP list or Trade Price lists for correct part numbers.

Series comparison

EMP-1707

- 2500 / 2100 ANSI lumens*
- LCD: 0.7 inch with MLA (D4.5)
- 1.6Kg

EMP-1717

as EMP-1707 except:

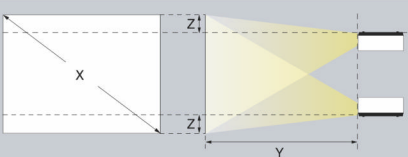
- 1.7kg
- Wireless LAN unit 802.11a/b/g
- Optional Ethernet unit RJ-45
- USB display feature (connect laptop to projector via USB cable only)
- PC less presentations, images or movies from USB memory stick
- Wireless multi-screen display with colour adjustment
- Stereo mini-jack can be set to input or output
- Epson projector software for meetings and presentations
- Epson control and projector management software

* Becta compliant 1500 ANSI lumens mode is available.
EMP-1707/1717: Theatre Mode Low Brightness Mode.

Screen size and projection distance

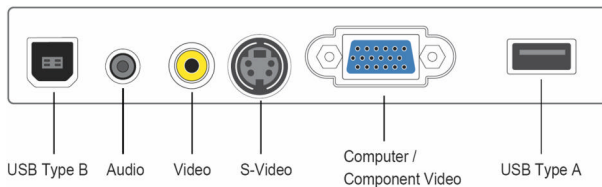
Use the Epson Projection Distance Calculator software available from www.epson.co.uk for distances and screen sizes not shown below.

When installing against a wall, leave about 20cm (7.9 in.) between the projector and the wall.



4:3 Screen size	Shortest (Wide)	Longest (Tele)	Vertical distance from center of lens to bottom edge of screen
X (screen size / dimension)	Y (cm / inch)		Z (cm / inch)
30" / 61 cm x 46 cm 24.0" x 18.1"	99 / 39	119 / 47	7 / 2.6
40" / 81 cm x 61 cm 31.9" x 24.0"	133 / 52	160 / 63	9 / 3.4
60" / 120 cm x 90 cm 47.2" x 35.4"	200 / 79	240 / 95	13 / 5.1
80" / 160 cm x 120 cm 63.0" x 47.2"	267 / 105	321 / 127	17 / 6.9
100" / 200 cm x 150 cm 78.7" x 59.1"	335 / 132	402 / 158	22 / 8.6
200" / 410 cm x 300 cm 161.4" x 118.1"	672 / 264	807 / 318	44 / 17.1
300" / 610 cm x 460 cm 240.2" x 181.1"	1009 / 397	1211 / 477	65 / 25.7

Connector panel



Lightweight and compact – includes carry case



Wireless module included



Optional RJ-45 networking (requires removal of Wireless module)

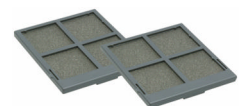


Accessories

Spare Lamp (ELPLP38)
V13H010L38



Air Filter Set (ELPAF08)
V13H134A08



Ethernet RJ45 LAN unit (ELPAP02)
To attach to the projector, replacing the Wireless LAN unit.
TBC



Soft Carrying Case (ELPKS16B)
For carrying the projector and a laptop.
V12H001K1B



Ceiling Mount (Silver) (ELPMB18)
Connects to the projector and either directly to the ceiling if a ceiling pipe is not required, or to the pipe if required.
V12H003B18



Ceiling Plate (Silver) (ELPFC03)
Use with the Ceiling Mount if a pipe is required
V12H003C03



Ceiling Pipes (Silver)
370mm (EPLFP04) V12H003P04
570mm (EPLFP05) V12H003P05
770mm (EPLFP06) V12H003P06



50" Portable Screen (ELPSC06)
V12H002S06



60" Portable Screen (ELPSC07)
V12H002S07



80" Portable Screen (ELPSC08)
V12H002S08

VGA Computer Cable HD-15 to HD-15 1.8m (ELPKC02)
V12H005C02



VGA Computer Cable HD-15 to HD-15 3.0m (ELPKC09)
V12H005C09

VGA Computer Cable HD-15 to HD-15 20m (ELPKC10)
V12H005C10

Component Video Cable (ELPKC19)
V12H005C19



What's in the Box

Projector

Carry Case

Remote Control



2 x AAA alkali batteries
for the remote control



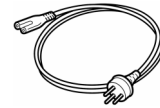
Wireless LAN unit
802.11a/11b/11g
(WN6501CEP), Screw 2 x 8 mm
(for fixing Wireless LAN unit) x1

Password Protect sticker
When Password Protect is enabled, attach this to the projector in a clearly visible location to increase anti-theft

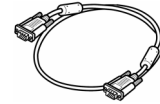


effectiveness.

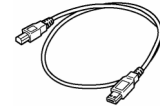
Power Cable
1.8m 240V cable



Computer Cable
Mini D-Sub 15-pin/mini D-Sub 15-pin, 1.8 m (6 ft.)
Use when projecting images from a computer



USB cable
1.8m. Use when connecting to a computer with a USB port to use the USB display or wireless mouse function.



Audio Adapter
3.5 mm Stereo mini plug to RCA pin jack x 2 red/white, 15 cm. To connect the projector to commercially-available RCA audio cables for sound input or output.



User Manual Set

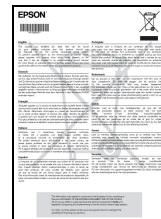
EMP-1707/1717

Quick Start Guide

Explains in simple diagrams the procedures for starting projection. Multilingual (part TBC)

EMP-1715 EasyMP
Quick Connection Guide
Multilingual (part TBC)

WEEE directive sheet
(part 4103354-01)



German regulations sheet
For German markets regarding local noise regulations
(part 4105344-00)



EMP-1700/1707/1715
Document CD-ROM (Win/Mac)
User Guides in PDF format.
(part TBC)

Epson projector software for Meetings & Presentations
(part TBC)

Feedback questionnaire
(part 4052171-00)

UK warranty document
240V UK versions only
(part 7010582-01)



Specifications

Projection System

RGB liquid crystal shutter projection system

Projection Method

Front / Rear / Ceiling mount

Specification of Main Parts

LCD

Size: 0.7-inch with MLA (D4.5)
 Driving Method: Poly-silicon TFT active matrix
 Pixel Number: 786432 dots (1024 x 768) x 3
 Native Resolution XGA
 Aspect Ratio: 4:3
 Pixel Arrangement: Stripe
 Refresh Rate: 50 Hz - 72 Hz

Projection Lens

Type: Manual zoom / Manual focus
 F-Number: 1.6 - 1.77
 Focal Length: 23.77 mm - 28.54 mm
 Zoom Ratio: 1 - 1.2
 Lens Cover: Slide lens shutter

Lamp

Type: 170 W UHE
 Life: 2000 hours (High brightness) / 3000 hours (Low brightness)

Optical System

Dichroic mirror separation & prism combine method

Image

Screen Size [Projected Distance]

30" to 300" [1.2m to 12.1m] (Zoom: Tele),
 30" to 300" [1.0m to 10.1m] (Zoom: Wide)
 60" screen [2.0m - 2.4m]

Offset: 6:1

Brightness

High Brightness Mode: 2500 ANSI lumens (Color mode: Game, Zoom: Wide)
 Low Brightness Mode: 2100 ANSI lumens (Color mode: Game, Zoom: Wide)

Contrast: 400:1 (Color mode : Game, High brightness mode)

Brightness Uniformity: 83%

Color Reproduction: Full color (16.77 million colors)

Sound

Output: 1W monaural

Speaker: 35 x 16 mm x 1

Function

Pointer, User logo, A/V mute, Freeze, E-Zoom, Help

Color Modes

PC: Photo, Presentation, Theatre, Game, sRGB, Blackboard,Custom

Video: Sports, Presentation, Theatre, Game, sRGB, Blackboard,Custom

Remote Control Infrared Receiver

Position: Front & rear (selectable)

Range: 6m

Directivity: Right / Left : -30 to +30 degrees, Upper / Lower : -15 to +15 degrees

Effective Scanning Frequency Range (Analog)

Pixel Clock: 13.5 MHz to 162 MHz

Horizontal: 15 kHz to 92 kHz

Vertical: 50 Hz to 85 Hz

Adjustment Function

Projector / Remote Control

Keystone / Brightness / Contrast / Tint / Saturation / Sound / Input signal etc.

Foot Adjuster: Front-center

Tilt Angle: 0 to 12 degrees

Vertical Keystone Correction: -30 to +30 degrees (Zoom: Tele)

Auto Keystone Correction

Source Search

Auto Detection of RGB/Component

Multi Screen Color Adjustment

Security Features

Operation Panel Protected Function

Password Protected Function

Protection of User logo

Time lock

Network

Analog RGB I/O

Display Performance

Native: 1024 x 768 dots

Input Signal

Signal Type: Separate signal

Video Signal: Analog (0.7 Vp-p,75 ohm/ Mac0.714 Vp-p, 75 ohm)

Sync. Signal: Separate (positive & negative, bi-polarity 2-5 Vp-p) / Composite (positive & negative, bi-polarity 2-5 Vp-p) / Sync-on-green(negative, 0.3 Vp-p)

Audio Signal: 500 mVrms / 47 k-ohm

Input Terminal

Video: D-sub 15pin x 1 Blue molding

Audio: Stereo mini-jack x 1 (Audio In or Out is selectable via the menu)

Video I/O

Display Performance

NTSC: 560 lines PAL: 560 lines (Depend on observation of the multi-burst pattern)

Input Signal

Video Standard: NTSC / NTSC4.43 / PAL / M-PAL / N-PAL / PAL60 / SECAM

Video Signal: Composite Video(1.0 Vp-p/ Sync.negative, 75 ohm) / S-Video (Luminous 0.714 Vp-p, Chrominous 0.286 Vp-p, 75 ohm) / Component Video (Analog Y level 0.7 V 75 ohm/ Cr Cb level +/-0.35 V 75 ohm / sync.negative 0.3 V or 3-state+/-0.3 V on Y) / RGB Video(0.7 Vp-p,75 ohm/ Mac 0.714 Vp-p,75 ohm)

Audio Signal: 500 mVrms / 47 k-ohm

Input Terminal

Video: Composite Video: RCA (Yellow) x 1

S-Video: Mini DIN

Component Video: D-sub 15pin Blue molding (in common with Analog RGB connector)

RGB Video: D-sub 15pin Blue molding (in common with Analog RGB connector)

USB Display

Audio: Stereo mini-jack x 1 (Audio In or Out are selectable via menu)

Control I/O

USB I/O

Type B x1 (for mouse, K/B, control)

Type A x1 (for IM-X)

Network I/O

Wireless LAN unit: 802.11a / 11b / 11g (WN6501CEP)

Optional Ethernet RJ45 LAN unit (ELPAP02): Attach to the projector, replacing the Wireless LAN unit

Operating Temperature

5 °C to 35 °C (41 °F to 95 °F) (20%-80% Humidity)

Thermal shut down > 45 °C

Operating Altitude

0m to 2286m (0 ft to 7500 ft) (over 1500m / 4,921 ft :with High altitude mode)

Power

Direct Power On

Start-up Period: about 5 seconds

Warm-up period: 30 seconds

Cool-down Period: Instant off (Ceiling: 20 seconds)

Power Supply Voltage: 100-240 V AC 50/60 Hz 2.7 - 1.2 A

Power consumption 230 V area (Europe etc)

Lamp On: 228 W

Standby (Network On): 18 W

Standby (Network Off): 5.1 W

Power Consumption 100-120V area (Japan, USA, etc.)

Lamp On: 244 W

Standby (Network On): 18 W

Standby (Network Off): 3.8 W

Physical Characteristics

Exhaust Direction: Side

Dimensions not including protruding parts: (D x W x H) 193 x 273 x 68 mm

Maximum dimensions: (D x W x H) 193 x 273 x 79 mm

Weight: Approx. 3.7 • bs / 1.7 kg

Fan Noise

High Brightness mode: 40 dB

Low Brightness mode: 35 dB

Supplied Accessories

Power Cable 1.8 m, Computer Cable 1.8 m D-sub 15pin (Male) - D-sub 15pin (Male), USB Cable 1.8 m, USB A/USB B Hi-Speed, Remote Control, Batteries for remote control - Alkaline AAA x 2, Audio Adapter 3.5 mm stereo miniplug (male) to RCA jack x2 (female) 15 cm, Soft Carrying Case, Password Protect Sticker, Wireless LAN unit 802.11a/11b/11g (WN6501CEP), Screw 2 x 8 mm(for fixing Wireless LAN unit) x1, EPSON Projector Software for Meetings & Presentations (CD-ROM), User's Manual Set

Optional Accessories

Spare Lamp ELPLP38, Air Filter Set ELPAF08 (contains 2 sheets), Soft Carrying Case (for projector and PC) ELPKS16B, 50" Portable Roll Screen ELPSC06, 60" Portable Roll Screen ELPSC07, 80" Portable Roll Screen ELPSC08, Ethernet RJ-45 unit,ELPAP02, Computer Cable: HD15 / HD15 1.8m ELPKC02 / 3.0m ELPKC09 / 20.0m ELPKC10, Component video cable HD15 / RCA male x3, 3.0m ELPKC19, Ceiling Mount (silver color) ELPMB18, Ceiling Plate (silver color) ELPFC03, Pipe (silver color) 370mm ELPFP04 / 570mm ELPFP05 / 770mm ELPFP06

Easy MP Software

Projector network control and management

E-mail notification

SNMP

PC Free

NetworkPresentation (Network and USB •

Web control

Software

EMP Monitor (for Windows)

EMP NS Connection (for Windows and Mac)

EMP Slide Maker2 (for Windows)

Security (Wireless LAN): WEP, WPA-PSK(TKIP), WPA-PSK(AES), EAP-TLS, EAP-TTLS/MD5, EAP-TTLS/MS-CHAPv2, PEAP/MS-CHAPv2, PEAP/GTC, LEAP, EAP-Fast/MS-CHAPv2, EAP-Fast/GTC

Warranty

UK: 3 year next day on site repair or replace

Republic of Ireland: 3 year next day on site repair or loan

Errors and omissions excepted, all specifications are subject to change without notice