

Multimedia Projector  
EB-826W / EB-825 / EB-85 / EB-84

SPECIFICATIONS		EB-826W	EB-825	EB-85	EB-84
Projection System		RGB Liquid-Crystal Shutter Projection System			
Specification of LCD	Size	0.59 inch	0.63 inch	0.63 inch	
Main Parts		with MLA (x3)			
Driving Method		Polysilicon TFT Active Matrix			
Pixel Number		1024000 dots (1280 x 800) x 3		786432 dots (1024 x 768) x 3	
Native Resolution		WXGA		XGA	
Projection Lens		Manual Focus & 1.6 x Optical Zoom F=1.49 - 1.94 / F=18.2 - 29.2 mm			
Lamp		E-TORL 200 W UHE			
Life		5000 hours (Brightness Control - High) / 6000 hours (Brightness Control - Low)			
Screen Size		29 to 280 inch		30 to 300 inch	
Offset		10:0		8.6:1	
Light Output* (Compliance with ISO21118)		2500 lm / 2000 lm		3000 lm / 2400 lm	
Color Light Output*		2500 lm		3000 lm	
Contrast*		2000:1			
Color Reproduction		Full-Color (16.77 million colors)			
Sound Output		10W Monaural			
Effective Scanning		Pixel Clock 13.5 MHz to 162 MHz			
Frequency Range (Analog)		Horizontal 15 kHz to 92 kHz Vertical 50 Hz to 117 Hz			
Auto Keystone Correction		Vertical: -30 to +30 degrees			
Analog RGB I/O		Display Performance Native 1280 x 800 dots (WXGA) / 1024 x 768 dots (XGA)			
		Resize UXGA / SXGA / SVGA / VGA / WXGA / WSXGA / SXGA+ / WXGA+ / UXGA / SXGA / SVGA / VGA / WXGA / WSXGA / SXGA+			
Input Terminal		Video D-sub 15-pin x 2			
		Audio Stereo mini-jack x 2			
Output Terminal		Video D-sub 15-pin x 1			
		Audio Stereo mini-jack x 1			
Video I/O		Input Signal Video Standard NTSC / NTSC4.43 / PAL / M-PAL / N-PAL / PAL60 / SECAM			
		Input Terminal Video Composite Video: RCA (Yellow) x 1, S-Video: Mini DIN Component Video: D-sub 15-pin x 2, RGB-Video: D-sub 15-pin x 2			
		Audio RCAX1 (White /Red)			
Mic Input		Input Terminal Audio Stereo mini-jack x 1 (Plug in Power is not supported.)			
Control I/O		USB I/O Type B x 1 (for USB Display, Mouse, Keyboard, Control)			
		Serial I/O Serial Terminal Mini D-sub 9 pin x 1			
Memory I/O		USB I/O TypeA x1 (for USB Memory & ELPDC06)			
Network I/O		USB I/O TypeA x1 (only for Wireless LAN module)			
		Wired LAN RJ45 x 1			
Operating Temperature		5°C to 35°C <41°F to 95°F> (20% - 80% Humidity)			
Operating Altitude		0 m to 2,286 m <0 ft to 7,500 ft> (over 1,500m <4,921 ft> area: with High altitude mode)			
Start-up Period		Approx 8.5sec.			
Direct Power On		Yes			
Cool-down Period		Instant off			
Power Supply Voltage		100 - 240 VAC ±10% , 50 / 60 Hz			
Power Consumption		Lamp On / Standby 100-120V 289W / 1.9W 220-240V 275W / 3.0W			
Dimensions (D x W x H)		250 x 327 x 95 mm (excludes feet)			
Weight		Approx. 3.1kg			
Fan Noise		Brightness Control - High / Low 35 dB / 28 dB			

\* Light Output / Color Light Output / Contrast --- Color mode: Dynamic, Zoom: Wide

SUPPLIED ACCESSORIES

- Power Cable 3.0 m
- Computer Cable 1.8 m
- USB Cable 1.8 m
- Remote Control-Manganese AA x 2
- Soft Carrying Case
- Password Protect Sticker
- Epson Projector Software for Meeting & Presentation (for EB-826W/825/85)
- Epson Projector Software for Monitoring (for EB-84)
- Owner's Manual

OPTIONAL ACCESSORIES

- ELPLP50 Spare Lamp
- ELPAF22 Air Filter Set
- ELPAP03 Wireless LAN Adaptor
- ELPAP05 Quick Wireless Connection USB Key
- ELPSC06 50-inch Screen
- ELPSC07 60-inch Screen
- ELPSC08 80-inch Screen
- ELPDC06 Document Camera

WARRANTY SERVICE

2 Years Onsite Warranty Service to be provided for local purchase only.



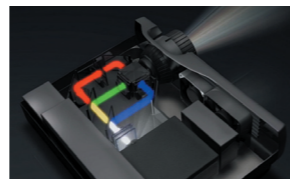
Extended Warranty

# The warranty service can be extended by purchasing Epson Coverplus Extended Warranty. For more information, please contact Epson customer support.

Bold, Bright, Beautiful...

3LCD Technology

3LCD technology achieves bright, natural images and smooth, sharp video playback. No color break-up makes images gentle on the eyes.



Optical unit with high light-use efficiency

Multimedia Projector

EB-826W WXGA

EB-825 XGA

EB-85 XGA

EB-84 XGA

EPSON  
EXCEED YOUR VISION



Make the classroom a fun place to be with more effective lessons

CONNECTOR PANEL

- LAN Port
- USB(Type B) Port
- USB(Type A) Port
- Computer 2 Input Port
- Computer 1 Input Port
- S-Video Input Port
- Video Input Port
- Mic Input Port
- Audio Input 2 Port
- Audio Input 1 Port
- Audio Out Port
- Audio-L Input Port
- Audio-R Input Port
- Monitor Out Port
- RS-232C Port

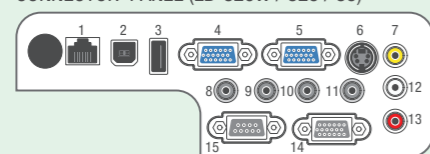
PROJECTION DISTANCE OF (XGA MODEL)

4:3 Screen size	Shortest (Wide)		Longest (Tele)	Vertical distance from center of lens to bottom edge of screen
	Y (cm / inch)	Z (cm / inch)	Z (cm / inch)	
30" / 81 cm x 46 cm 24.0" x 18.1"	83 / 33	136 / 54	5 / 1.8	
40" / 81 cm x 61 cm 31.9" x 24.0"	111 / 44	182 / 72	6 / 2.5	
60" / 120 cm x 90 cm 47.2" x 35.4"	169 / 66	275 / 108	9 / 3.7	
80" / 160 cm x 120 cm 63.0" x 47.2"	226 / 89	368 / 145	13 / 4.9	
100" / 200 cm x 150 cm 78.7" x 59.1"	283 / 111	460 / 181	16 / 6.2	
200" / 410 cm x 300 cm 161.4" x 118.1"	568 / 224	923 / 363	31 / 12.3	
300" / 610 cm x 460 cm 240.2" x 181.1"	854 / 336	1386 / 546	47 / 18.5	

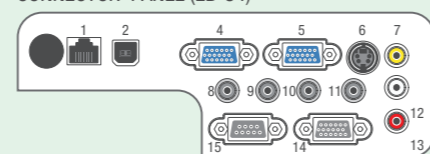
PROJECTION DISTANCE OF (WXGA MODEL)

16:10 Screen size	Shortest (Wide)		Longest (Tele)	Vertical distance from center of lens to bottom edge of screen
	Y (cm / inch)	Z (cm / inch)	Z (cm / inch)	
30" / 65 cm x 40 cm 25.4" x 15.9"	88 / 35	144 / 57	1 / 0.4	
40" / 86 cm x 54 cm 33.9" x 21.2"	118 / 47	193 / 76	1 / 0.5	
60" / 125 cm x 81 cm 50.9" x 31.9"	179 / 70	292 / 115	2 / 0.7	
80" / 172 cm x 108 cm 67.8" x 42.4"	239 / 94	390 / 153	2 / 1	
100" / 215 cm x 136 cm 84.8" x 53.0"	300 / 118	488 / 192	3 / 1.2	
200" / 431 cm x 269 cm 169.6" x 106.0"	603 / 237	979 / 385	6 / 2.5	
280" / 600 cm x 370 cm 236.2" x 145.6"	845 / 333	1371 / 540	9 / 3.4	

CONNECTOR PANEL (EB-826W / 825 / 85)



CONNECTOR PANEL (EB-84)



EPSON  
EXCEED YOUR VISION

EPSON HONG KONG LIMITED  
20/F., Harbour Centre,  
25 Harbour Road, Wanchai, Hong Kong

Epson Customer Service Centre  
Unit 517, Trade Square, 681 Cheung Sha Wan Road,  
Cheung Sha Wan, Kowloon, Hong Kong  
20/F., Harbour Centre,  
25 Harbour Road, Wanchai, Hong Kong

Enquiry hotline : (852) 2827 8711  
Technical hotline : (852) 2827 8911

URL: [www.epson.com.hk](http://www.epson.com.hk)

APR09-67-PROJECTOR

# Make the classroom a fun place to be with more effective lessons

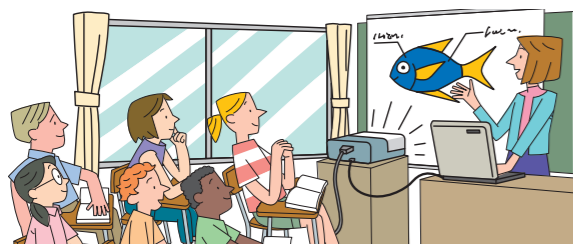
A powerful, easy to use projector designed with the needs of teachers and students in mind. The crisp, bright images help your lessons evolve into something wonderful. Not only that, maintenance has become simpler and easier to do, with the costs of upkeep becoming cheaper as well. Ideal for a wide variety of educational settings!



## Ideal for the Classroom

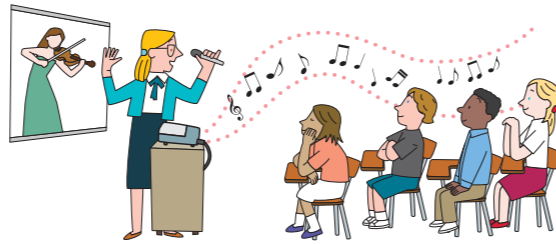
### Powerful 3000lm Can Be Used in a Bright Room EB-825

It isn't necessary to close the curtains to dim the room.



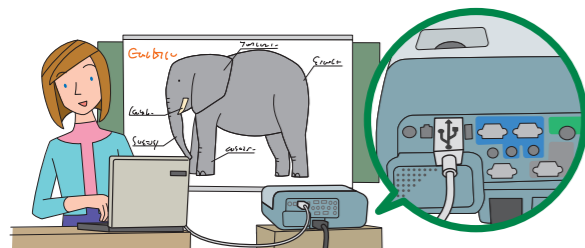
### Microphone Input Terminal and Built-in 10W Speaker

Allows the teacher's voice to be heard well.



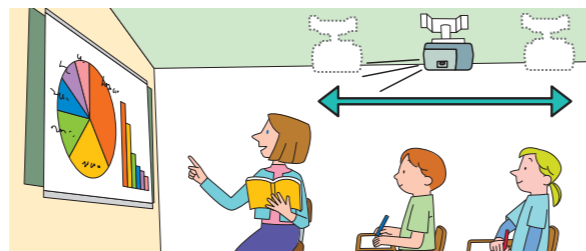
### USB Display Function

A simple connection to a PC via an ordinary USB cable allows images to be projected without having to switch the monitor output setting on the PC.



### 1.6x Zoom Lens

The wide range of set up provides a high likelihood of corresponding with the position of the previously used projector.



### Whiteboard & Blackboard Mode

Images are adjusted to suit the background when projecting to a whiteboard or blackboard. There are also 6 other color modes supported: Dynamic, Presentation, Theatre, sRGB, Sports, and Photo.

### Instant Off & Direct Power On/Off

**Instant Off:** Put it away immediately after turning off the power.  
**Direct Power On/Off:** Projector can be turned on/off by simply switching on/off the room's power source.

## Long Life and Simple Maintenance Help to Keep Costs Down

### 6000 Hour Lamp Life\*

Life span is extended with newly refined E-TORL lamp



### Easy Lamp & Filter Replacement

Even when ceiling mounted, both are easy to change.



\*In the Low Brightness Control setting.

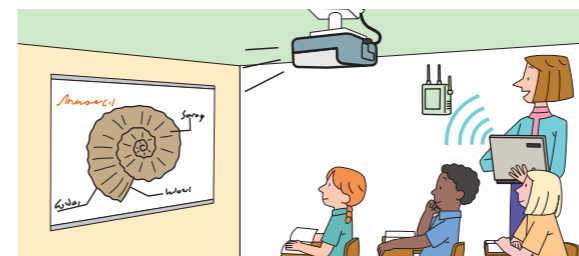
## Line-up

- EB-826W 2500lm WXGA
- EB-825 3000lm XGA
- EB-85 2600lm XGA    EB-84 2600lm XGA

## Advanced Function, Wide-ranging Connectivity

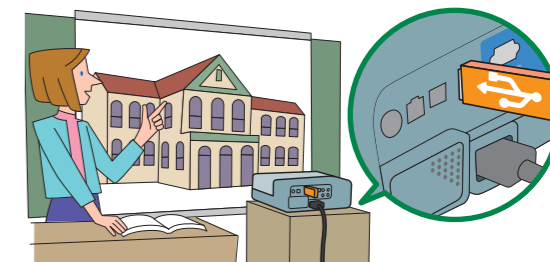
### Wired LAN Projection EB-826W / 825 / 85

Project PC images wirelessly via an access point if projector is connected to a wired LAN.



### USB Memory Slide Show EB-826W / 825 / 85

Show images stored on a USB memory device.



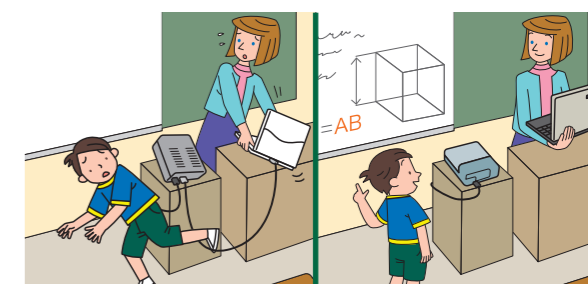
### Monitor & Control EB-826W / 825 / 85 / 84

Monitor and control projector using a PC from a remote location with LAN cable. There is no need for a caretaker to make rounds in a large school to check things like lamp condition one by one.



### Wireless Solution EB-826W / 825 / 85

No cables leaves a tidy appearance. There is no chance of tripping over messy wires. (Wireless module is optional)



## Increased Security Features

### Key Lock

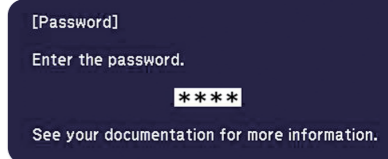
Locks all buttons on main body, so operation is only possible using the remote controller.



Protect against theft by locking to something using a security wire.

### Password Protect

Makes it impossible to turn on without inputting a password using the remote controller at start-up.



Protect against theft by securing unit using a Kensington Lock.