



AH215 offers
 ultimate convenience
 with numerous intelligent features
 for home cinema
 and entertainment.

ENTERTAINMENT LOVER'S DREAM COMES TRUE



Home Cinema Projector **AH215**

It automatically optimizes image quality, adjusting brightness, contrast and gamma. This not only makes for a clearer picture, but also saves energy and prevents eye fatigue.





Key Feature



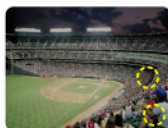
Intelligent Sensor

Using projectors in improper conditions could cause image distortion according to the brightness of the surroundings.

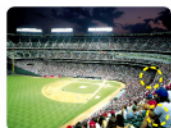
LG AH215 has an auto sensor which measures the brightness of the surrounding and controls the image quality factors, such as brightness and contrast, by intelligent sensor algorithm to realize the best suitable image to the given surrounding.



Intelligent Sensor



Sensor OFF



Sensor ON



Brilliant Color™

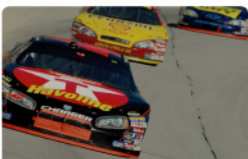
BrilliantColor™ Technology provides increased brightness in non-primary colors and boosts overall color intensity through amplifying mid-tone color



VIDI™ technology

For Front projection projectors, brightness is essential for a powerful data presentation. Also, natural and life-like colors are just as important for playing video games or watching sports.

PHILIPS VIDI™, technology enhances video performance DLP in terms of color expression, gamma & dithering noise, and offers vivid picture quality without color distortion. Also enables you have a impressive presentation time what you intend to express



VIDI™ Off



VIDI™ On (Brighter red, Improved yellow)



Expert Color Management

Even though they are watching the same screens, users' preference for picture quality differs according to their personal taste and using environments. Thus, LG Projector provides the "expert mode" to control to set the customized picture mode for users' preferring image quality.



Long Lamp Life (Eco)

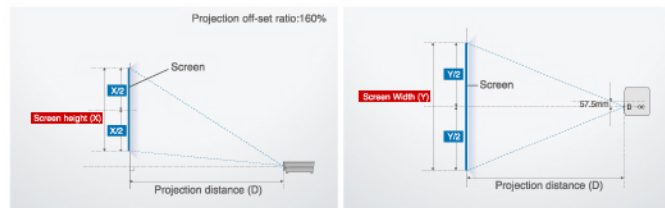
3000hrs in normal mode.



Low Noise Level 23dB (Eco)

LG patent ICND technology and Optimized design for cooling air flow enables the AH215 operate with 23dB low noise in power saving mode.

Projection distance based on the picture format



*16:9 Scale

Image				Projection Distance	
Diagonal Size (inch)	Diagonal Size (mm)	Horizontal Size (mm)	Vertical Size (mm)	Wide Distance (mm)	Tele Distance (mm)
40	1016	886	498	1627	1892
50	1270	1107	623	2040	2372
60	1524	1328	747	2453	2853
70	1778	1550	872	2866	3333
80	2032	1771	996	3280	3813
90	2286	1992	1121	3693	4294
100	2540	2214	1245	4106	4774
120	3048	2657	1494	4932	5735
140	3556	3099	1743	5759	6696
160	4064	3542	1992	6585	7657

Specifications

Projection System		DLP
Display Technology		0.62" DMD
Native Resolution		720P(1280 x 720)
Brightness(ANSI-Lumens)		1800
Contrast Ratio(FIFO)		2500:1
Noise	High Brightness	27dB
	Economic	23dB
Uniformity(min)JBMA		>95%
Color wheel		7 segment(RGBWRGB)
Projection Lens	Focus	Manual
	Zoom	Manual 1.16x
Projection Image	Screen Size	40"-250"
	Standard	100"@4.1m
	Throw Ratio	1.8/2.1(wide/tele)
Lens Shift		-
Projection Offset		134%
Lamp	Type	220W
	Life High Brightness	3000 hrs
	Life Economic	4000 hrs

General Specification	
Menu Language	Korean / English / French / Spanish / German Italian / Swedish / Portuguese / Chinese Simplified / Polish / Brazilian Portuguese

Aspect Ratio Control	Native 16:9, Support 4:3
Sound	-
Dimension (mm)	302x271x95 (Exclusive leg)
Weight (kg)	3.4 kg
Power Consumption	280W / Stand-By 5W under
Power Supply	AC 100 ~ 240V(Free Voltage), 50Hz/60Hz
Input Signal Compatibility	Digital(DVI,HDMI) Up to SXGA+(1400X1050@75Hz) HDMI 1080p(60hz/50hz/24Hz) RGB Up to SXGA+(1400X1050@75Hz)
	Component Video 1080p / 1080i / 720p / 576p / 576i / 480p / 480i
	Composite Video (incl. S-Video) NTSC/PAL/SECAM/NTSC4.43/PAL-M/PAL-N

INPUT/OUTPUT Terminals	
	1*RGB in/1*S Video/1*Composite/ 1*Component(Y/Pb/Pr)/1*HDMI/1*USB(SVC)

Special Features	
	Digital Keystone Correction/Picture Still/ Quick Power on/off /Auto Sleep/Smart Picture Mode Intelligent Sensor/Brilliant Color™/Expert control VIDI™

Accessory	
	Power cord/D-sub 15 pin cable/Video cable Remote Control/Quick setup Guide/Lens Cap CD Manual/AAA * 2EA Battery

INPUT / OUTPUT Terminals

