



**Our New Standard...Their New Benchmark  
Engineered for Richer Colors and High Brightness**

**WIRELESS DVI**

**NEW**



### Functional Performance at its Best

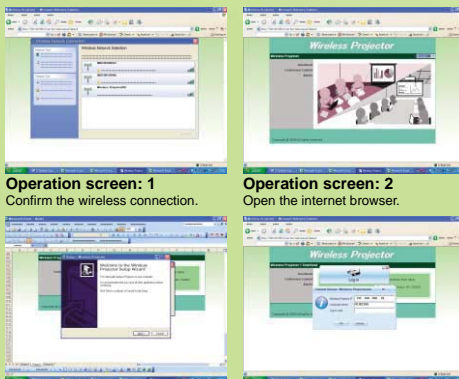
- ▶ **Bright 3000 ANSI lumens**
- ▶ **2000:1 rich contrast ratio**
- ▶ **Center lens design** for symmetrical installation
- ▶ **Splash screen and wall screen support**
- ▶ **Time-saving instant shut down feature**
- ▶ **DVI Connectivity**



Splash screen

You can project native digital signals in all its full high-definition glory via the DVI input source.

- ▶ **Simple Wireless**  
It is not necessary to manually insert a CD-ROM\* on your system, since all the installation files can be downloaded.



**Operation screen: 1**  
Confirm the wireless connection.

**Operation screen: 2**  
Open the internet browser.



**Operation screen: 3**  
Download and install the software.



**Operation screen: 4**  
Input the login code and start showing the image wirelessly.

In just four simple steps, you can access your projector wirelessly—making installation a snap.

\*A wireless LAN connection between the projector and personal computer is necessary.

### Easy Maintenance & Security Features

- ▶ **Top-access lamp cover** for easy lamp replacement
- ▶ **Enhanced security features** with an anti-theft security bar and password protection
- ▶ **Filter-free design**

Top Access Lamp Cover



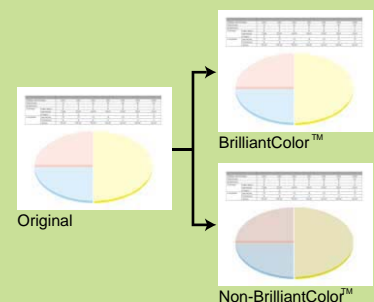
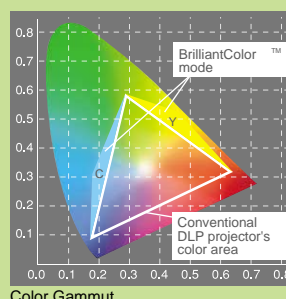
Mobile XGA  
**XD530U**

### BrilliantColor™ Technology and Mitsubishi Engineering Yields Superior Color Performance

BrilliantColor™ Technology is Texas Instrument's latest innovation for richer colors with better imaging for vibrant display. At Mitsubishi, we developed a 6-segment color wheel that includes RGBWYC. Apart from the typical red, green, blue and white, we added yellow and cyan segments to display a wider color spectrum. In addition, we coded our color algorithms to emphasize the brightness or color modes that designed to match the environment where the XD530U is used.

Together with selective lamp powered modulation techniques, the XD530U with BrilliantColor™ Technology acts intelligently to boost colors to improve the intensity and vibrancy of an entire display. For instance, when projecting an already bright screen image, the lamp is programmed to provide brighter and more vivid color. In contrast, if the image shows genuine color reproduction, the algorithm delivers just the right colors with the appropriate radiance for maximum visual impact.

\*BrilliantColor is a trademark of Texas Instruments.



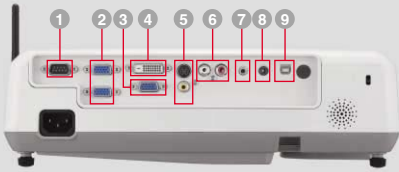
**NEW**



Mobile XGA **XD530U**



**Input and Output Terminals**



- 1 Serial RS-232C
- 2 PC / Component Video input (mini D-sub 15pin)
- 3 PC / Component Video output
- 4 DVI-D (with HDCP)
- 5 S-Video / RCA
- 6 Audio input [RCA jack (L/R)]
- 7 Audio input (stereo mini jack)
- 8 Audio output
- 9 USB terminal for Page Up/Down

**Wireless Antenna and RJ45 Terminal**



Wireless antenna and RJ45 terminal incorporated into the side of the projector.

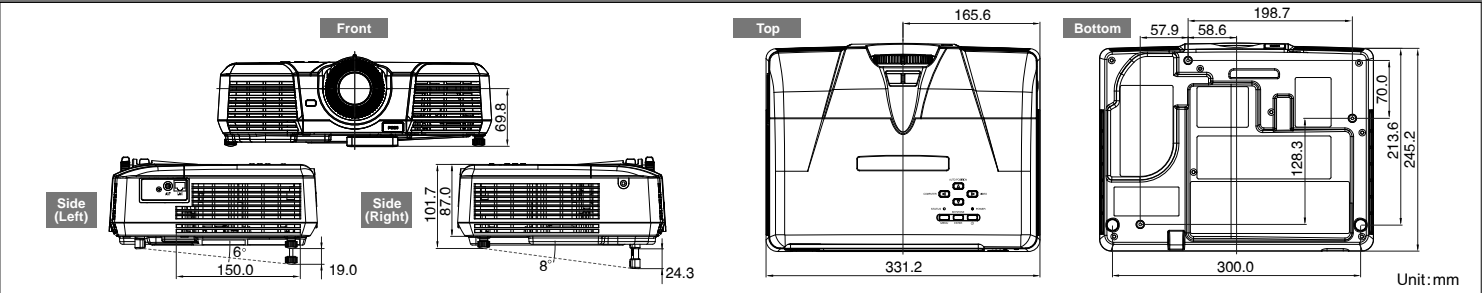
\*RJ45 terminal is used for sending images from computer

**Specifications**

Model	XD530U		
Display technology	0.55"1-Chip DMD		
Resolution	1024 x 768 (total 786,432 pixels)		
Brightness	3000lm		
Contrast	2000:1		
Throw Ratio	1.6 - 2.0		
Picture Size	40" ~ 300"		
Source lamp	230W (Shut Off Time 3000Hrs) with Low Mode, 280W (Shut Off Time 2000Hrs) with Standard Mode		
Computer compatibility	640 x 480 ~ 1280 x 1024, True: 1024 x 768, include WXGA, Sync on green available		
Input signal system	Video	NTSC / NTSC4.43 / PAL (including PAL-M, N) / SECAM / PAL-60 Component Video : 480i/p (525i/p), 576i/p (625i/p), 720p (750p), 1080i (1125i 60Hz), 1080i (1125i 50Hz)	
	PC	Windows 2000 / XP / Vista*	
Input terminals	RGB : mini D-sub15pin x 2, DVI-D (with HDCP) x 1, Video : RCA x 1 + S-video x 1 Audio : stereo mini jack (φ3.5mm) x 1, RCA jack (L/R) x 1		
Output terminals	RGB : mini D-sub15pin x 1, Audio : stereo mini jack (φ3.5mm) x 1		
Communication terminals	RS-232C (D-sub 9pin) x 1, USB terminal for Page Up/Down x 1		
Audio speaker	2W mono		
Dimensions (WxHxD)	332 x 102 x 250 mm / 13.1 x 4.0 x 9.8 inch (excluding height adjustment)		
Weight	3.4kg / 7.5lbs		
Power supply	AC100-240V, 50/60Hz		
Optional lamp	VLT-XD520LP		
Warranty	3-yrs Parts/Labor, 3-yrs Express Replacement Assistance, 1-yr or 500 hours lamp warranty (whichever comes first)		
Accessories	Replacement Lamp (VLT-XD520LP), Ceiling Mount (PROJ-UCM-PRO2 - Universal Ceiling Mount), Hard Shell Rolling Case (DKT1-ATAC), Soft Carrying Case (XL1-SSCC), Soft Rolling Case (DKT1-SRCC)		

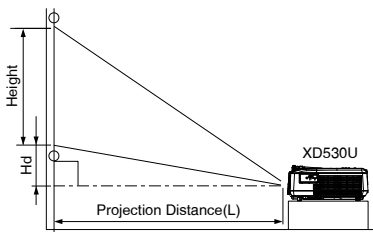
\*Operation not guaranteed on Vista. All brand names and product names are trademarks, registered trademarks or trade names of the irrespctive holders.

**Dimensions**



**Screen size and Projection distance**

As seen from the side

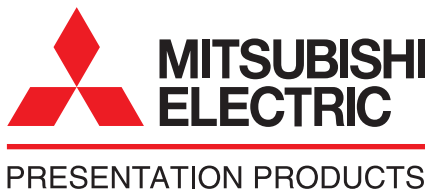


**Screen size chart**

Screen (4:3 aspect ratio)						Screen (16:9 aspect ratio)					
Diagonal size	Width (W)	Height (H)	Distance from screen (L)		Height projected image (Hd)	Diagonal size	Width (W)	Height (H)	Distance from screen (L)		Height projected image (Hd)
inch	cm	inch	cm	inch	cm	inch	cm	inch	cm	inch	cm
40	102	32	81	24	61	51	1.3	62	1.6	1.8	5
60	152	48	122	36	91	77	2.0	94	2.4	2.7	7
80	203	64	163	48	122	103	2.6	125	3.2	3.6	9
100	254	80	203	60	152	129	3.3	157	4.0	4.5	11
150	381	120	305	90	229	195	4.9	236	6.0	6.8	17
200	508	160	406	120	305	260	6.6	315	8.0	9.0	23
250	635	200	508	150	381	326	8.3	394	10.0	11.3	29
300	762	240	610	180	457	391	9.9	-	-	13.5	34

The above numbers are approximate, and may be slightly different from the actual measurements.

**MITSUBISHI DIGITAL ELECTRONICS AMERICA, INC.**  
 Presentation Products Division  
 Phone: 888.307.0349  
 Email: ppdinfo@mdea.com  
 www.mitsubishi-presentations.com



**MITSUBISHI ELECTRIC SALES CANADA, INC.**  
 Information Technologies Group  
 Phone: 905.475.7728  
 www.mitsubishielecric.ca