

FEATURES

- 1 PRECISE POSITIONING**
Vertical projector cradle adjustment and fore/aft projector positioning.
- 2 QUICK CONNECT/DISCONNECT**
Convenient lamp and filter access on most projectors. Maintains registration even when disconnected.
- 3 LOW PROFILE**
Requires only 11" (279 mm) of clearance above ceiling. Provides 8.25" (210 mm) of downward travel.
- 4 MULTIPLE INSTALLATION OPTIONS**
Mounting options include: Three 0.38" (10 mm) threaded rods, 1-1/2" NPT threaded extension column with SMA601 accessory, and side mounting with built-in joist tabs.

WHAT YOU NEED TO KNOW

MULTIPLE CONTROL OPTIONS

Choose from single momentary push button, low voltage controller, and internal and external wiring options. Also accepts 5–30V AC/DC for triggering commands. AMX/Crestron control compatibility.

VOLTAGE OPTIONS

120V or 230V (for 230V order the SL150I), current draw of .9 amps

FLEXIBLE INSTALLATION

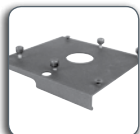
Independent roll, pitch and yaw

WIRE MORE THAN ONE DEVICE

SPECIFICATIONS

Extension	8.25" (210 mm)
Max Projector Size	18 x 9.5 x 22.25" (458 x 241 x 565 mm)
Ceiling Opening	22 x 25.75" (558 x 654 mm)
Ceiling Closure	19.6 x 22.4" (499 x 594 mm)
Roll/Pitch/Yaw	+/-2°, +/-20°, +/-5°
Weight Capacity	35 lbs (15.9 kg)
Color	White

RECOMMENDED ACCESSORIES

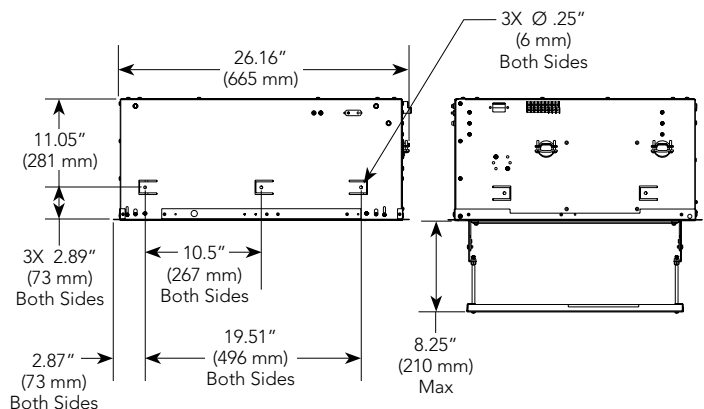


SLB ■ Projector Interface Bracket (required)



IR10 ■ Infrared Remote Control

TECHNICAL DRAWINGS



For a complete list of automated mount accessories see page 81.